

LEASE

1125 MAGGIE LANE, UNIT 1

Billings, MT 59101



LEASE RATE \$10.00 SF/yr
AVAILABLE SF 6,820 SF

 [CLICK TO VIEW VIDEO](#)

George Warmer, SIOR, CCIM
(406) 855-8946

©2023 Coldwell Banker. All Rights Reserved. Coldwell Banker Commercial® and the Coldwell Banker Commercial logos are trademarks of Coldwell Banker Real Estate LLC. The Coldwell Banker® System is comprised of company owned offices which are owned by a subsidiary of Anywhere Advisors LLC and franchised offices which are independently owned and operated. The Coldwell Banker System fully supports the principles of the Equal Opportunity Act.



COLDWELL BANKER
COMMERCIAL
CBS

LEASE

1125 MAGGIE LANE, UNIT 1

1125 Maggie Lane, Unit 1 Billings, MT 59101



OFFERING SUMMARY

Lease Rate:	\$10.00 SF/yr (NNN)
Building Size:	6,820 SF
Available SF:	6,820 SF
Year Built:	1979
Zoning:	CX-Heavy Commercial

LOCATION OVERVIEW

6,820 SF
\$10.00 PSF NNN
\$5,666.66 Base Rent
\$601.50 Nets
Total Monthly Rent: \$6,268.16

*.91 Acre fenced yard, may also be leased.

George Warmer, SIOR, CCIM
(406) 855-8946



**COLDWELL BANKER
COMMERCIAL**
CBS

PHOTOS

1125 MAGGIE LANE, UNIT 1

Billings, MT 59101



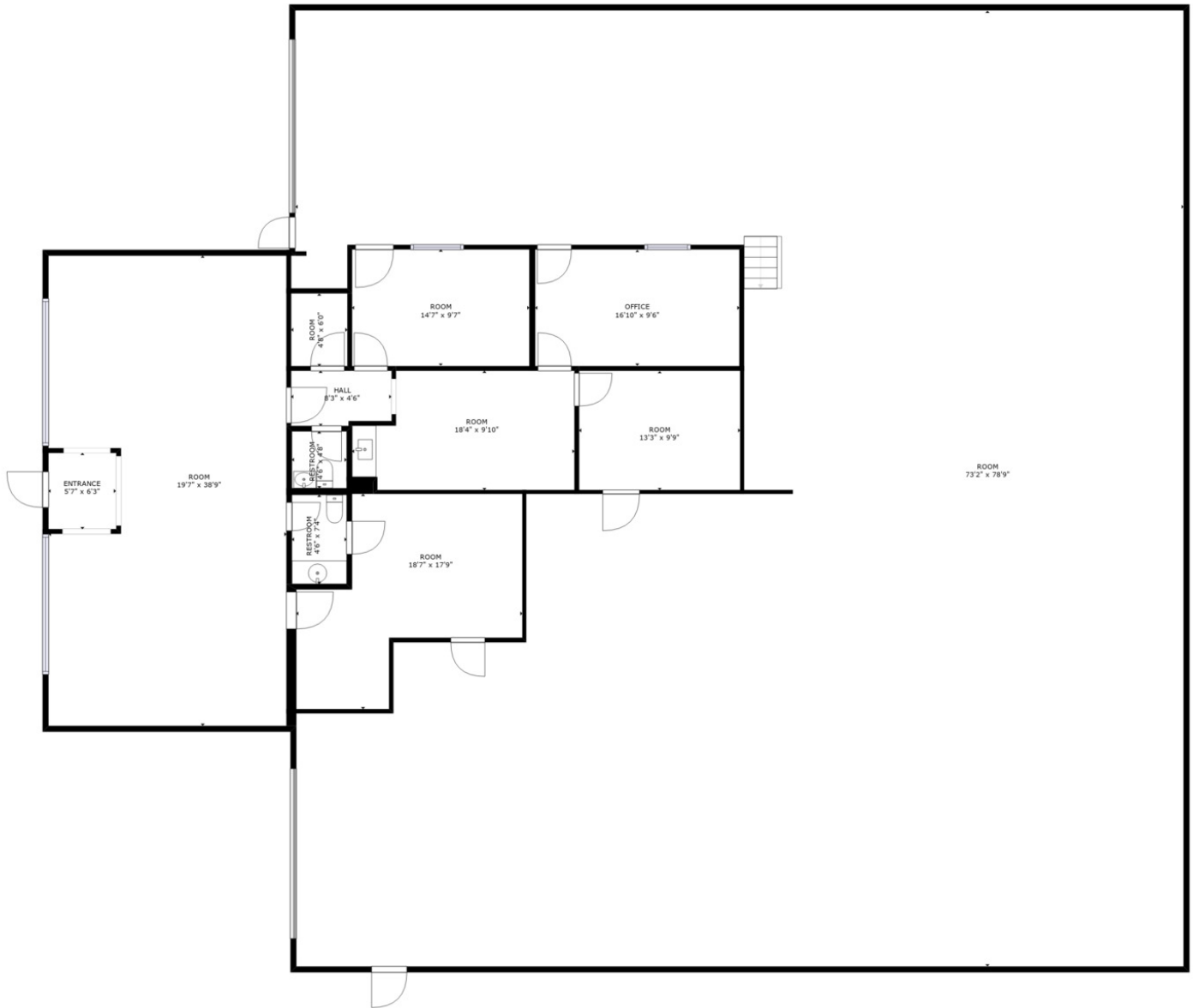
George Warner, SIOR, CCIM
(406) 855-8946



**COLDWELL BANKER
COMMERCIAL**
CBS

LEASE

1125 MAGGIE LANE, UNIT 1
1125 Maggie Lane, Unit 1 Billings, MT 59101



GROSS INTERNAL AREA
FLOOR 1: 6545 sq. ft, FLOOR 2: 1101 sq. ft
TOTAL: 7647 sq. ft
SIZES AND DIMENSIONS ARE APPROXIMATE, ACTUAL MAY VARY.



George Warner, SIOR, CCIM
(406) 855-8946



COLDWELL BANKER
COMMERCIAL
CBS

LEASE

1125 MAGGIE LANE, UNIT 1
1125 Maggie Lane, Unit 1 Billings, MT 59101



George Warner, SIOR, CCIM
(406) 855-8946



COLDWELL BANKER
COMMERCIAL
CBS

MAP

1125 MAGGIE LANE, UNIT 1

Billings, MT 59101



George Warmer, SIOR, CCIM
(406) 855-8946

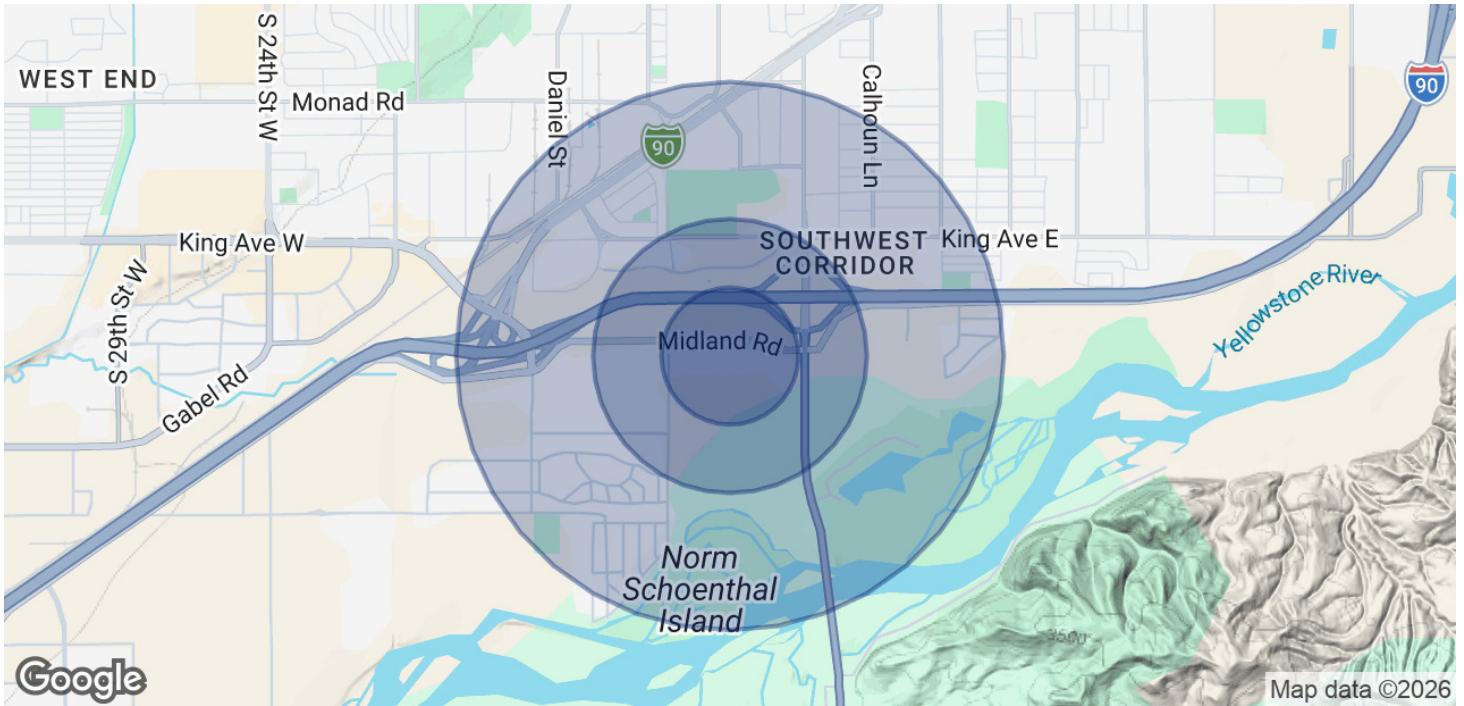


COLDWELL BANKER
COMMERCIAL
CBS

LEASE

1125 MAGGIE LANE, UNIT 1

Billings, MT 59101



POPULATION	0.25 MILES	0.5 MILES	1 MILE
Total Population	113	523	3,085
Average Age	36.1	37.9	39.6
Average Age (Male)	34.8	37.6	40.1
Average Age (Female)	42.5	43	43

HOUSEHOLDS & INCOME	0.25 MILES	0.5 MILES	1 MILE
Total Households	50	239	1,410
# of Persons per HH	2.3	2.2	2.2
Average HH Income	\$89,505	\$86,198	\$80,382
Average House Value	\$334,522	\$300,757	\$253,775

2023 American Community Survey (ACS)

George Warmer, SIOR, CCIM
(406) 855-8946



COLDWELL BANKER
COMMERCIAL
CBS

BROKER BIO

1125 MAGGIE LANE, UNIT 1

Billings, MT 59101



George Warmer, SIOR, CCIM

Principal Broker

george@cbcmontana.com
Office: (406) 656-2001 | Cell: (406) 855-8946



MT #RRE-RBS-LIC-14174

PROFESSIONAL BACKGROUND

George Warmer is a Broker/Owner of Coldwell Banker Commercial CBS, specializing in sales, leasing, and development of commercial properties in Montana. George is an SIOR & CCIM Designee and has worked in the commercial real estate business since 2005. During that time, he has brokered millions of dollars in leasing and sales transactions.

EDUCATION

George's 21 years' experience as a commercial real estate specialist, background in banking and business experience gives George a unique insight into the needs of his commercial clients. As an SIOR and CCIM designee, George offers his clients the valuable analytical tools necessary to make sound commercial real estate decisions.

MEMBERSHIPS

Member: SIOR
Member: CCIM
Board Member: Metra Park
Board Member: Big Sky Economic Development Association
Board Member: City of Billings Board of Adjustments
Board Member: Coldwell Banker Commercial Advisory Board
Active Member of West End Rotary

RECOGNITION

2024 Halter Case Award Recipient
Top 2% Producer, Platinum Circle of Distinction

2025 Transactions of Note

Loves TRUCKING, LAUREL MT LAND
GAS STATION DEVELOPMENT

5509 KING AVE E INDUSTRIAL
14,500 SF SHOP SPACE

5907 BLUFF LANE INDUSTRIAL
9,443 SF SHOP SPACE

2815 S 48TH ST INDUSTRIAL
STORAGE UNITS

1617 1ST AVE N LAND
90,000 SF AVAILABLE FOR SALE!
2 ACRE DEVELOPMENT SITE

CBS
3135 Meadow View Dr.
Billings, MT 59102
406.656.2001

George Warmer, SIOR, CCIM
(406) 855-8946



**COLDWELL BANKER
COMMERCIAL**
CBS