

# SALE

**1555 CAMPUS WAY, STE D & E**

Billings, MT 59102



**SALE PRICE** \$725,000

**SIZE** 2,818 SF

**Nathan Matelich, CCIM**  
(406) 781-6889

©2023 Coldwell Banker. All Rights Reserved. Coldwell Banker Commercial® and the Coldwell Banker Commercial logos are trademarks of Coldwell Banker Real Estate LLC. The Coldwell Banker® System is comprised of company owned offices which are owned by a subsidiary of Anywhere Advisors LLC and franchised offices which are independently owned and operated. The Coldwell Banker System fully supports the principles of the Equal Opportunity Act.

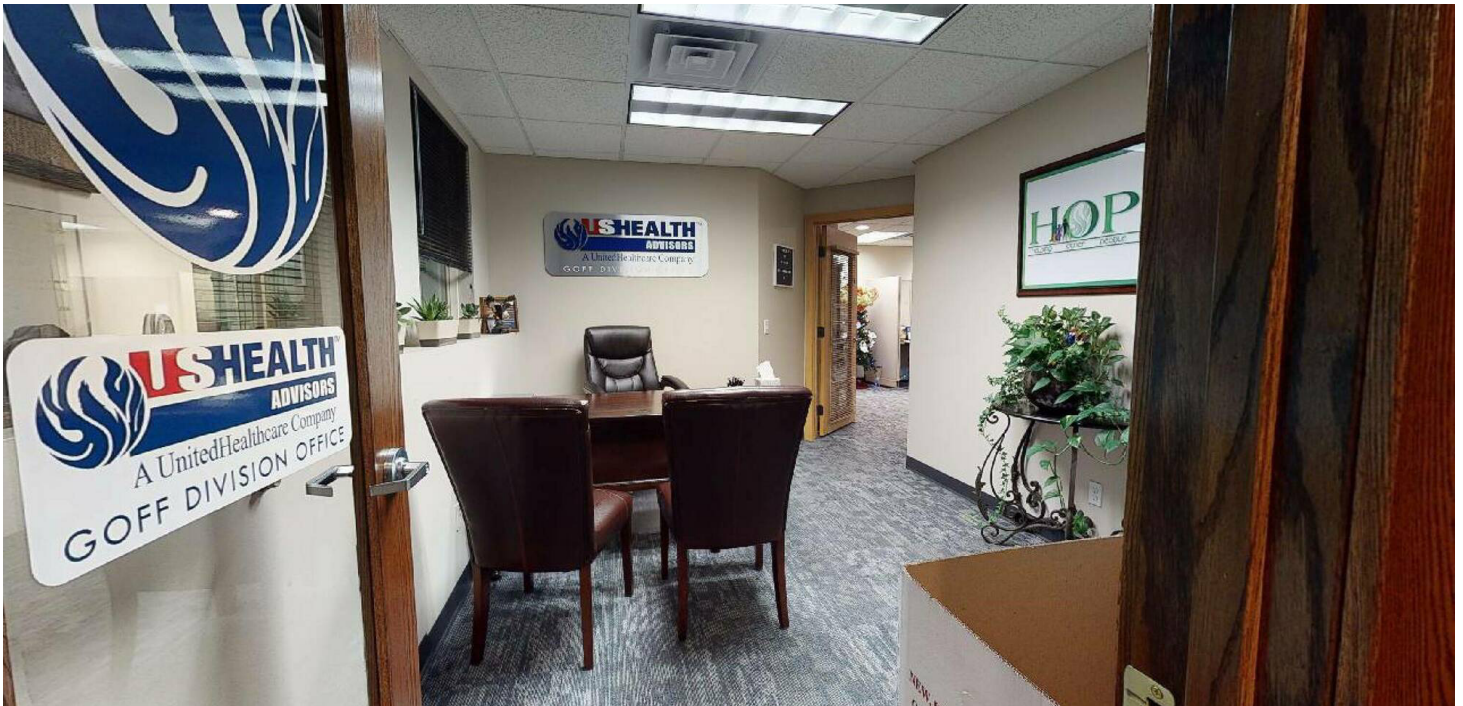


**COLDWELL BANKER  
COMMERCIAL**  
CBS

# SALE

1555 CAMPUS WAY, STE D & E

Billings, MT 59102



Sale Price

**\$725,000**

## OFFERING SUMMARY

Available SF: 2,818 SF

Price / SF: \$230.67

Zoning: PUD-Planned Unit Development

## PROPERTY OVERVIEW

- 1555 Campus Way, Stes D & E, Billings, MT
- 2,818 SF Office Space
- 8 Offices
- Reception
- Bullpen Area
- Conference Room
- Break Room
- Copy Room
- Private and Common Area Bathrooms
- Storage Closet

## LOCATION OVERVIEW

1555 Campus Way is a Class A professional office building located in midtown Billings, MT. With new carpet, rich wood finishes and traditional office layout, this space is a prime opportunity for businesses seeking a well-positioned office space. This space is located in a professional office park adjacent to a beautiful park for those employees who wish to take their lunch break outside. All landscaping and common area maintenance are included in the condo association.

**Nathan Matelich, CCIM**  
(406) 781-6889

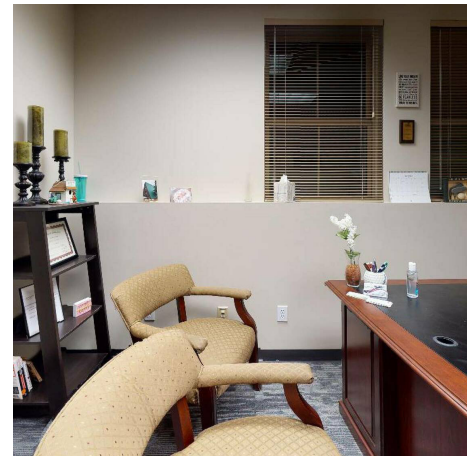
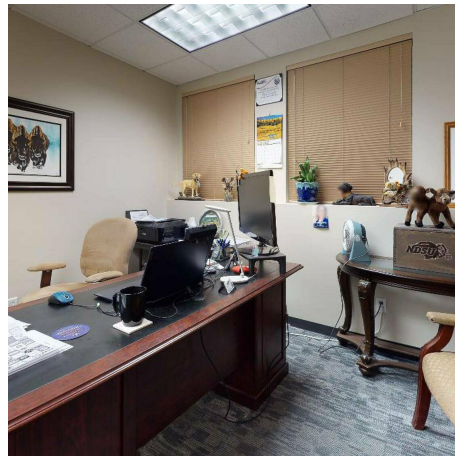
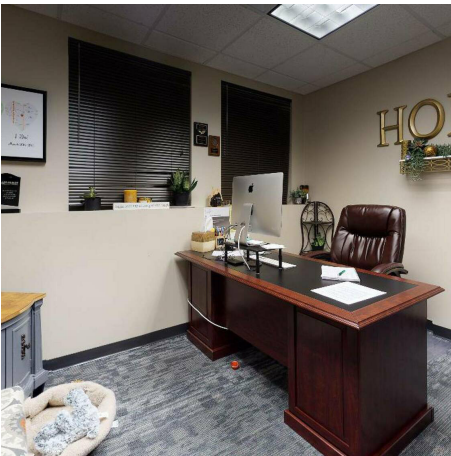


**COLDWELL BANKER  
COMMERCIAL**  
CBS

# SALE

1555 CAMPUS WAY, STE D & E

Billings, MT 59102



**Nathan Matelich, CCIM**  
(406) 781-6889



**COLDWELL BANKER  
COMMERCIAL**  
CBS

# SALE

1555 CAMPUS WAY, STE D & E

Billings, MT 59102



**Nathan Matelich, CCIM**  
(406) 781-6889

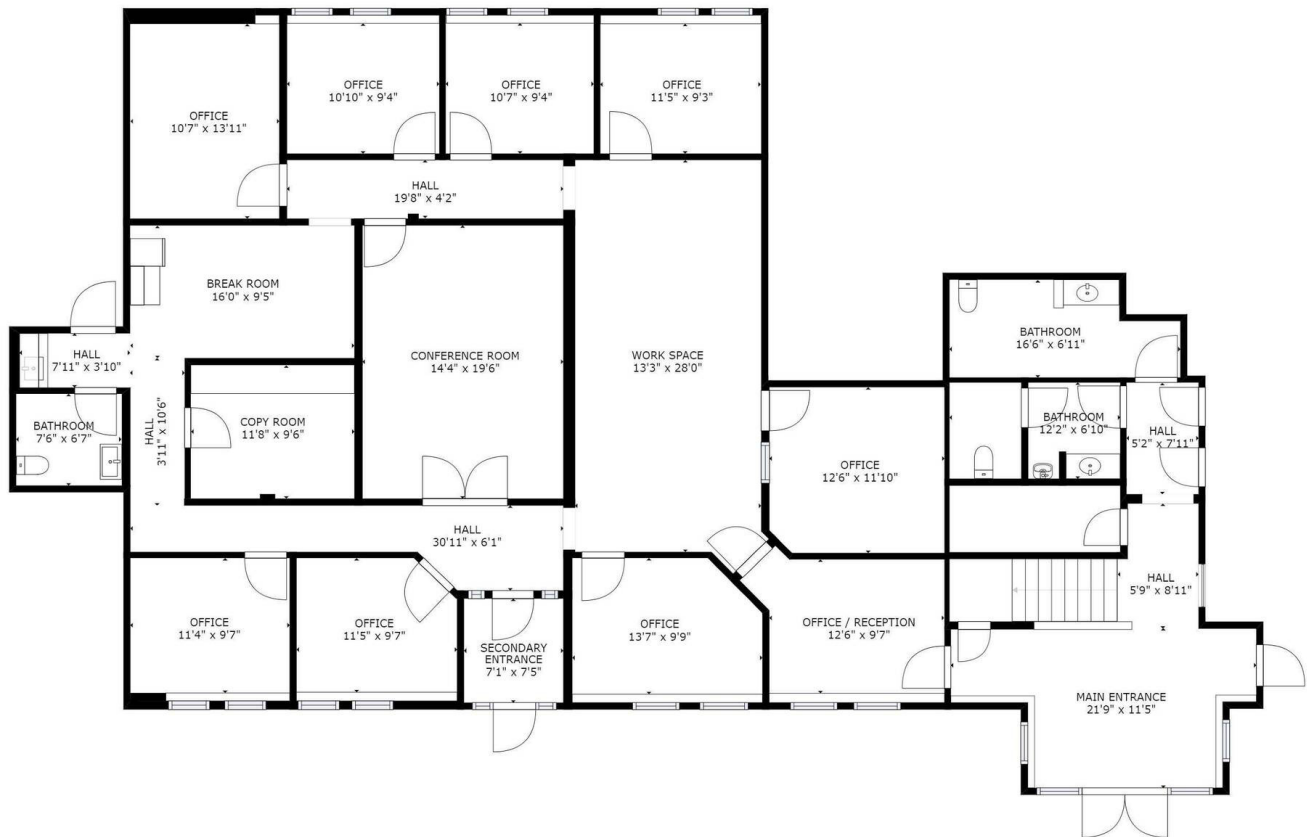


**COLDWELL BANKER  
COMMERCIAL**  
CBS

# SALE

1555 CAMPUS WAY, STE D & E

Billings, MT 59102



FLOOR 1

GROSS INTERNAL AREA  
FLOOR 1: 3210 sq. ft  
TOTAL: 3210 sq. ft  
SIZES AND DIMENSIONS ARE APPROXIMATE, ACTUAL MAY VARY.



**Nathan Matelich, CCIM**  
(406) 781-6889

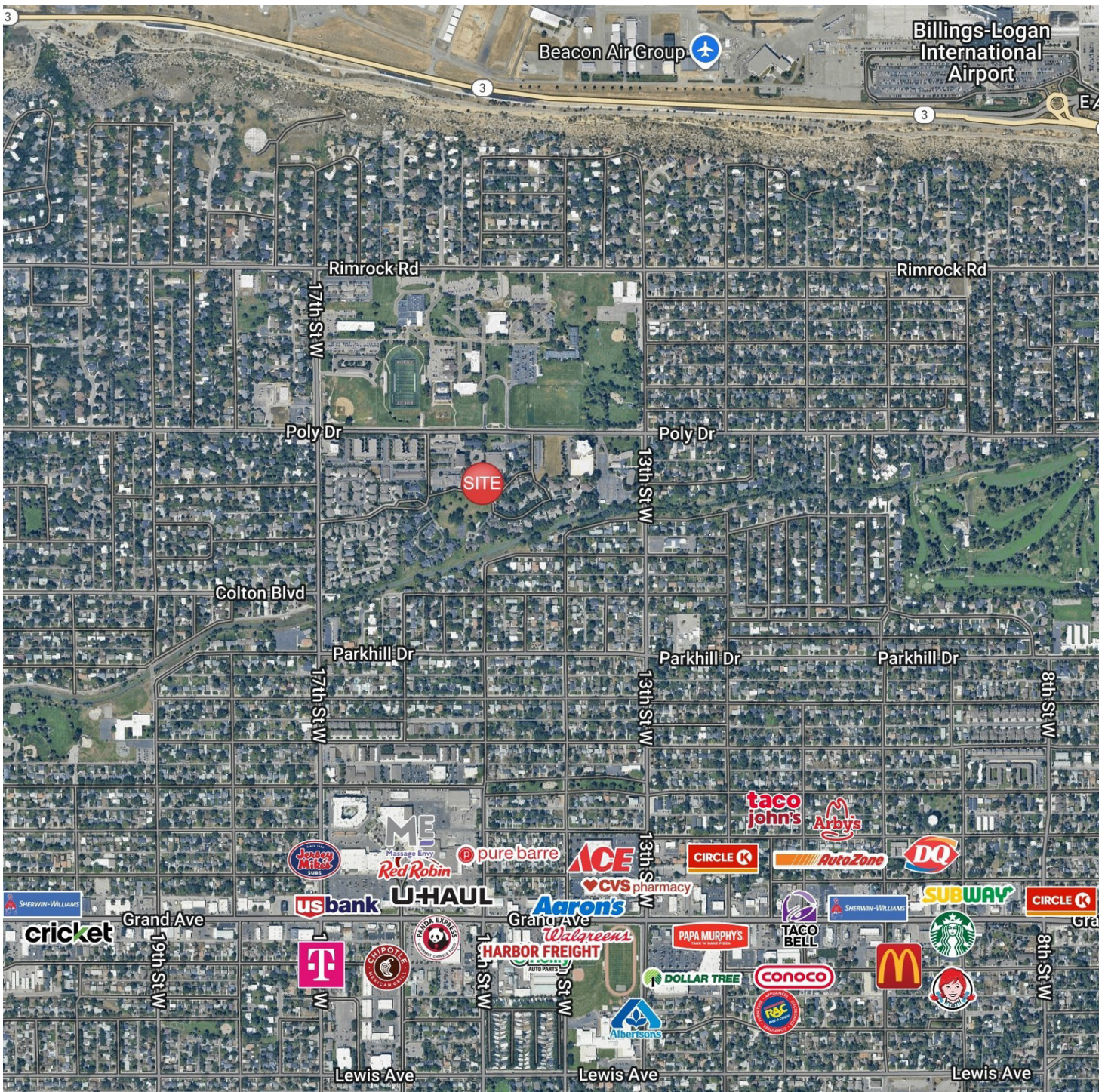


**COLDWELL BANKER  
COMMERCIAL**  
CBS

# SALE

1555 CAMPUS WAY, STE D & E

Billings, MT 59102



**Nathan Matelich, CCIM**  
(406) 781-6889

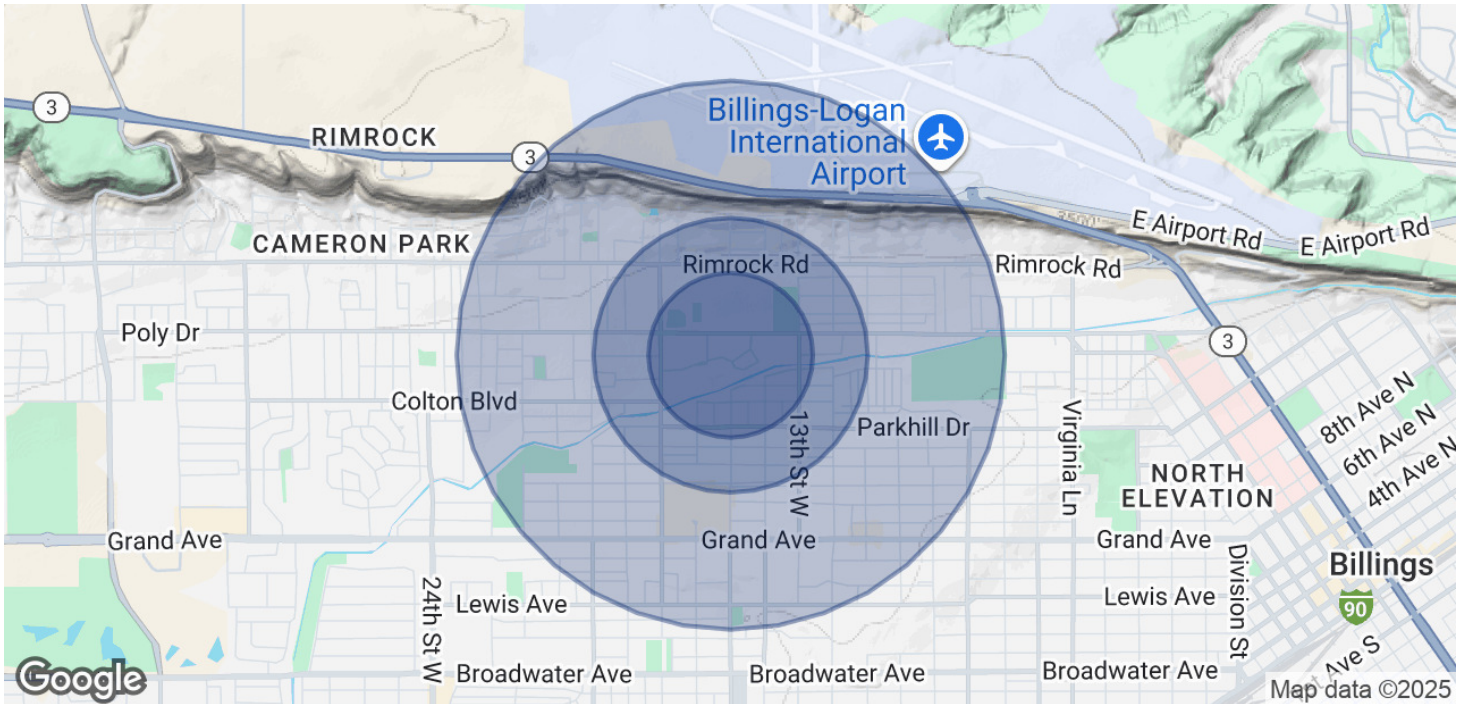


**COLDWELL BANKER  
COMMERCIAL**  
CBS

# SALE

## 1555 CAMPUS WAY, STE D & E

Billings, MT 59102



### POPULATION

	0.3 MILES	0.5 MILES	1 MILE
Total Population	695	3,545	11,381
Average Age	44	42	41
Average Age (Male)	42	40	40
Average Age (Female)	46	43	42

### HOUSEHOLDS & INCOME

	0.3 MILES	0.5 MILES	1 MILE
Total Households	329	1,503	4,910
# of Persons per HH	2.1	2.4	2.3
Average HH Income	\$114,149	\$116,586	\$110,766
Average House Value	\$504,774	\$492,505	\$442,044

Demographics data derived from AlphaMap

**Nathan Matelich, CCIM**  
(406) 781-6889



**COLDWELL BANKER  
COMMERCIAL**  
CBS