

SALE / LEASE

1125 MAGGIE LANE

Billings, MT 59101



SALE PRICE \$1,625,000
LEASE RATE \$10.00 SF/yr

[CLICK TO VIEW VIDEO](#)

George Warmer, SIOR, CCIM
(406) 855-8946

©2023 Coldwell Banker. All Rights Reserved. Coldwell Banker Commercial® and the Coldwell Banker Commercial logos are trademarks of Coldwell Banker Real Estate LLC. The Coldwell Banker® System is comprised of company owned offices which are owned by a subsidiary of Anywhere Advisors LLC and franchised offices which are independently owned and operated. The Coldwell Banker System fully supports the principles of the Equal Opportunity Act.



**COLDWELL BANKER
COMMERCIAL**
CBS

SALE / LEASE

1125 MAGGIE LANE

Billings, MT 59101



VIDEO

360° VIRTUAL TOUR

PROPERTY DESCRIPTION

13,682 SF Shop Building comprised of 3 Units located on a 28,052 SF Tract

Shop 1 6,820 SF (Available For Lease)

Shop 2 3,410 SF (Available For Lease)

Shop 3 3,410 SF (Available For Lease)

ALSO Includes .91 acre tract of land across the road

PROPERTY HIGHLIGHTS

- Includes Fenced Yard Space
- 14' Overhead door
- Restroom
- Off Street Parking
- Easy access to the Interstate
- Additional .91 Acre Fenced Yard (Available For Lease)

OFFERING SUMMARY

Sale Price:	\$1,625,000
Lease Rate:	\$10.00 SF/yr (NNN)
Available SF:	3,400, 3,400, & 6,820 SF
Lot Sizes:	28,052 SF & 39,640 SF
Building Size:	13,682 SF

DEMOGRAPHICS	1 MILE	5 MILES	10 MILES
Total Households	784	42,665	64,538
Total Population	1,841	98,029	151,817
Average HH Income	\$47,038	\$54,327	\$59,889

George Warmer, SIOR, CCIM
(406) 855-8946



COLDWELL BANKER
COMMERCIAL
CBS

PHOTOS

1125 MAGGIE LANE

Billings, MT 59101



George Warner, SIOR, CCIM
(406) 855-8946

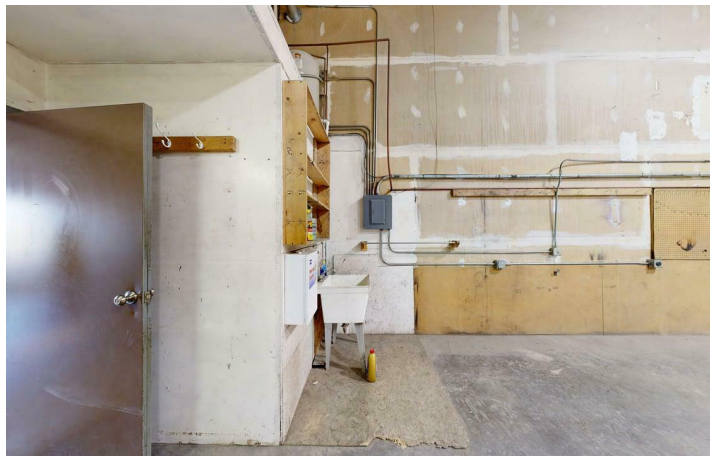
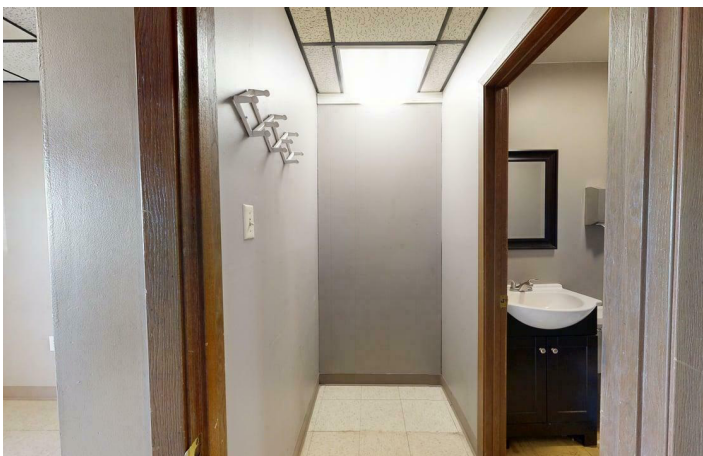
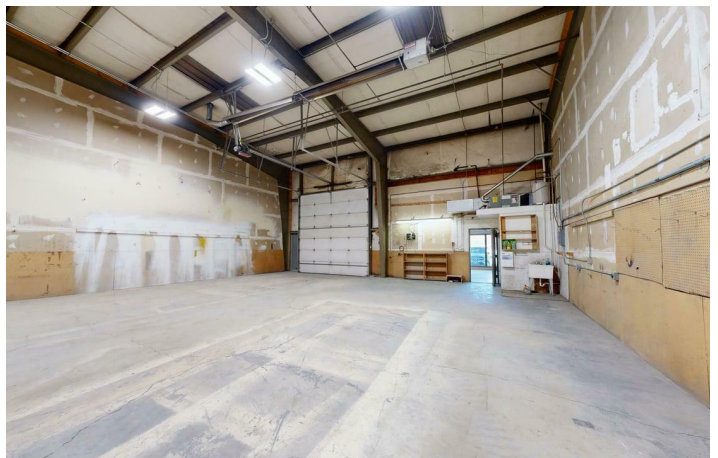
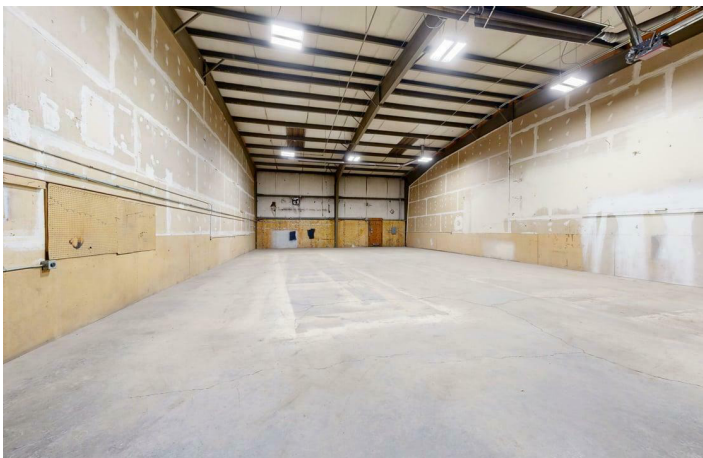


**COLDWELL BANKER
COMMERCIAL**
CBS

INTERIOR PHOTOS

1125 MAGGIE LANE

Billings, MT 59101



George Warmer, SIOR, CCIM
(406) 855-8946

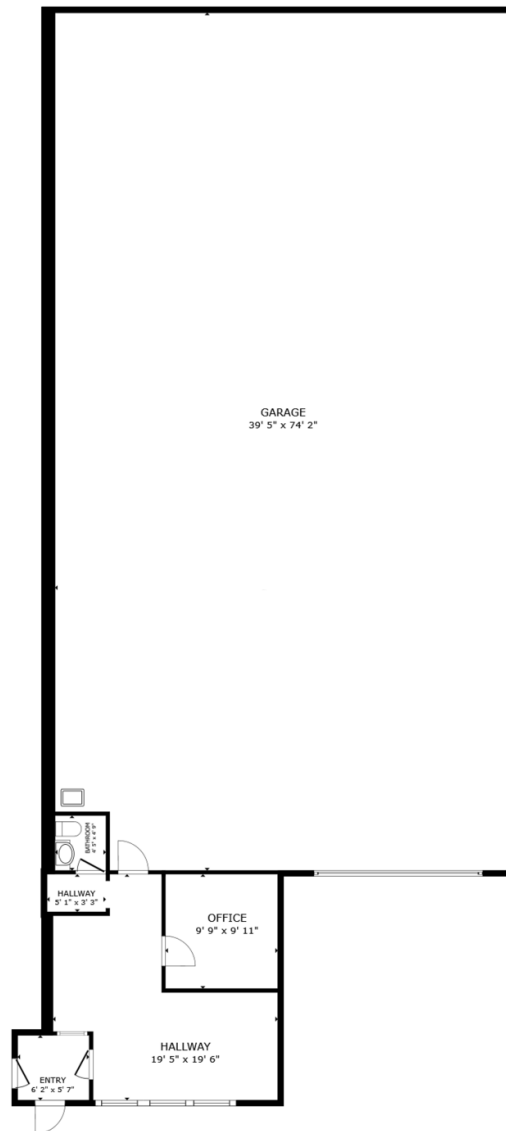


**COLDWELL BANKER
COMMERCIAL**
CBS

FLOOR PLAN, UNITS 2 & 3

1125 MAGGIE LANE

Billings, MT 59101



FLOOR PLAN

GROSS INTERNAL AREA
FLOOR PLAN 429 sq.ft.
EXCLUDED AREAS : GARAGE 2,902 sq.ft.
TOTAL : 429 sq.ft.

SIZES AND DIMENSIONS ARE APPROXIMATE, ACTUAL MAY VARY.



George Warner, SIOR, CCIM
(406) 855-8946

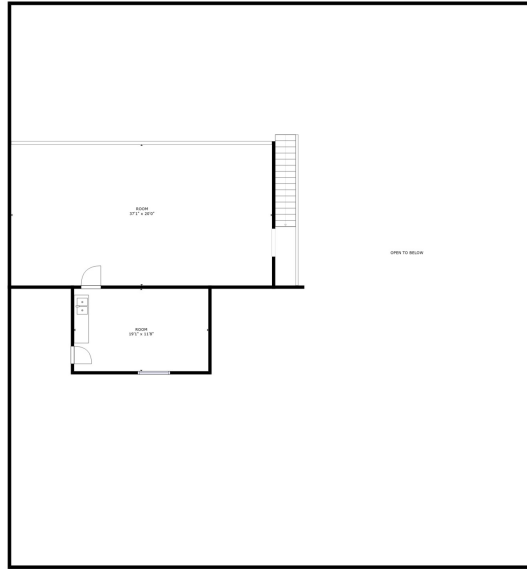


**COLDWELL BANKER
COMMERCIAL**
CBS

FLOOR PLAN, UNIT 1

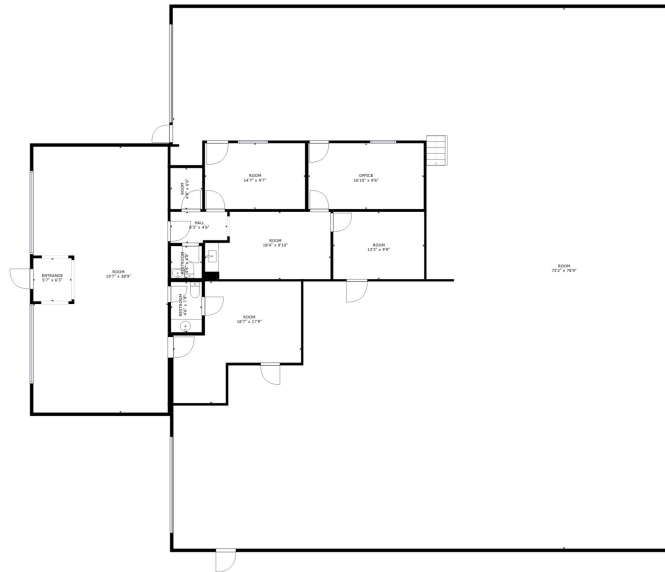
1125 MAGGIE LANE

Billings, MT 59101



FLOOR 2

GROSS INTERNAL AREA
FLOOR 1: 6545 sq. ft., FLOOR 2: 1101 sq. ft.
TOTAL: 7647 sq. ft.
SIZES AND DIMENSIONS ARE APPROXIMATE, ACTUAL MAY VARY.



FLOOR 1

GROSS INTERNAL AREA
FLOOR 1: 6545 sq. ft., FLOOR 2: 1101 sq. ft.
TOTAL: 7647 sq. ft.
SIZES AND DIMENSIONS ARE APPROXIMATE, ACTUAL MAY VARY.



George Warner, SIOR, CCIM
(406) 855-8946



**COLDWELL BANKER
COMMERCIAL**
CBS



George Warner, SIOR, CCIM
(406) 855-8946

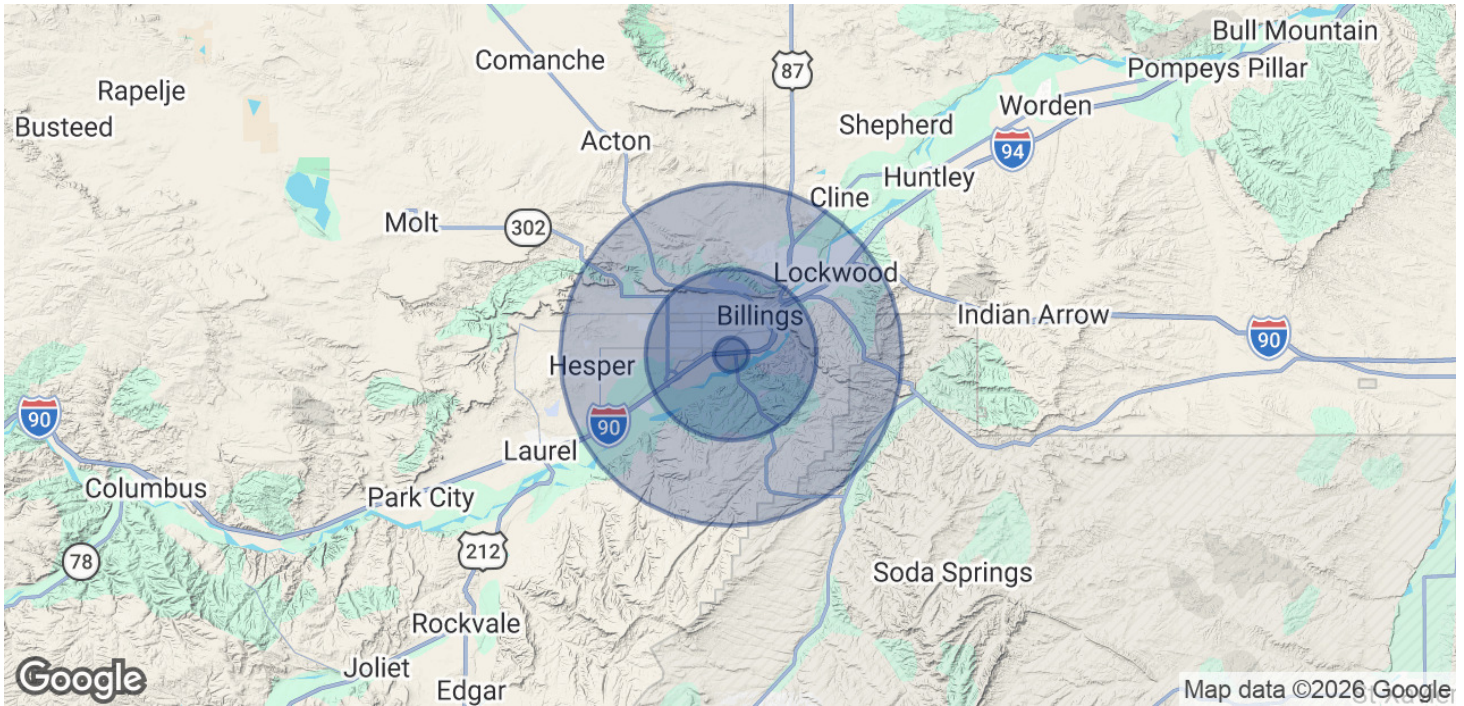


**COLDWELL BANKER
COMMERCIAL**
CBS

DEMOGRAPHICS

1125 MAGGIE LANE

Billings, MT 59101



POPULATION	1 MILE	5 MILES	10 MILES
Total Population	1,841	98,029	151,817
Average Age	36.1	37.1	37.6
Average Age (Male)	32.4	35.6	35.9
Average Age (Female)	40	38.9	39.4
HOUSEHOLDS & INCOME	1 MILE	5 MILES	10 MILES
Total Households	784	42,665	64,538
# of Persons per HH	2.3	2.3	2.4
Average HH Income	\$47,038	\$54,327	\$59,889
Average House Value	\$125,426	\$173,531	\$191,571

2020 American Community Survey (ACS)

George Warmer, SIOR, CCIM
(406) 855-8946



**COLDWELL BANKER
COMMERCIAL**
CBS



George Warmer, SIOR, CCIM

Principal Broker

george@cbcmontana.com
Office: (406) 656-2001 | Cell: (406) 855-8946



MT #RRE-RBS-LIC-14174

PROFESSIONAL BACKGROUND

George Warmer is a Broker/Owner of Coldwell Banker Commercial CBS, specializing in sales, leasing, and development of commercial properties in Montana. George is an SIOR & CCIM Designee and has worked in the commercial real estate business since 2005. During that time, he has brokered millions of dollars in leasing and sales transactions.

EDUCATION

George's 21 years' experience as a commercial real estate specialist, background in banking and business experience gives George a unique insight into the needs of his commercial clients. As an SIOR and CCIM designee, George offers his clients the valuable analytical tools necessary to make sound commercial real estate decisions.

MEMBERSHIPS

Member: SIOR
Member: CCIM
Board Member: Metra Park
Board Member: Big Sky Economic Development Association
Board Member: City of Billings Board of Adjustments
Board Member: Coldwell Banker Commercial Advisory Board
Active Member of West End Rotary

RECOGNITION

2024 Halter Case Award Recipient
Top 2% Producer, Platinum Circle of Distinction

2025 Transactions of Note

CBS
3135 Meadow View Dr.
Billings, MT 59102
406.656.2001

George Warmer, SIOR, CCIM
(406) 855-8946



**COLDWELL BANKER
COMMERCIAL**
CBS