

# LEASE

## 1555 CAMPUS WAY, STE D & E

1555 Campus Way, Ste D & E Billings, MT 59102



**LEASE RATE**

\$4,929.00 per month

**SIZE**

2,818 SF

**Nathan Matelich, CCIM**

(406) 781-6889

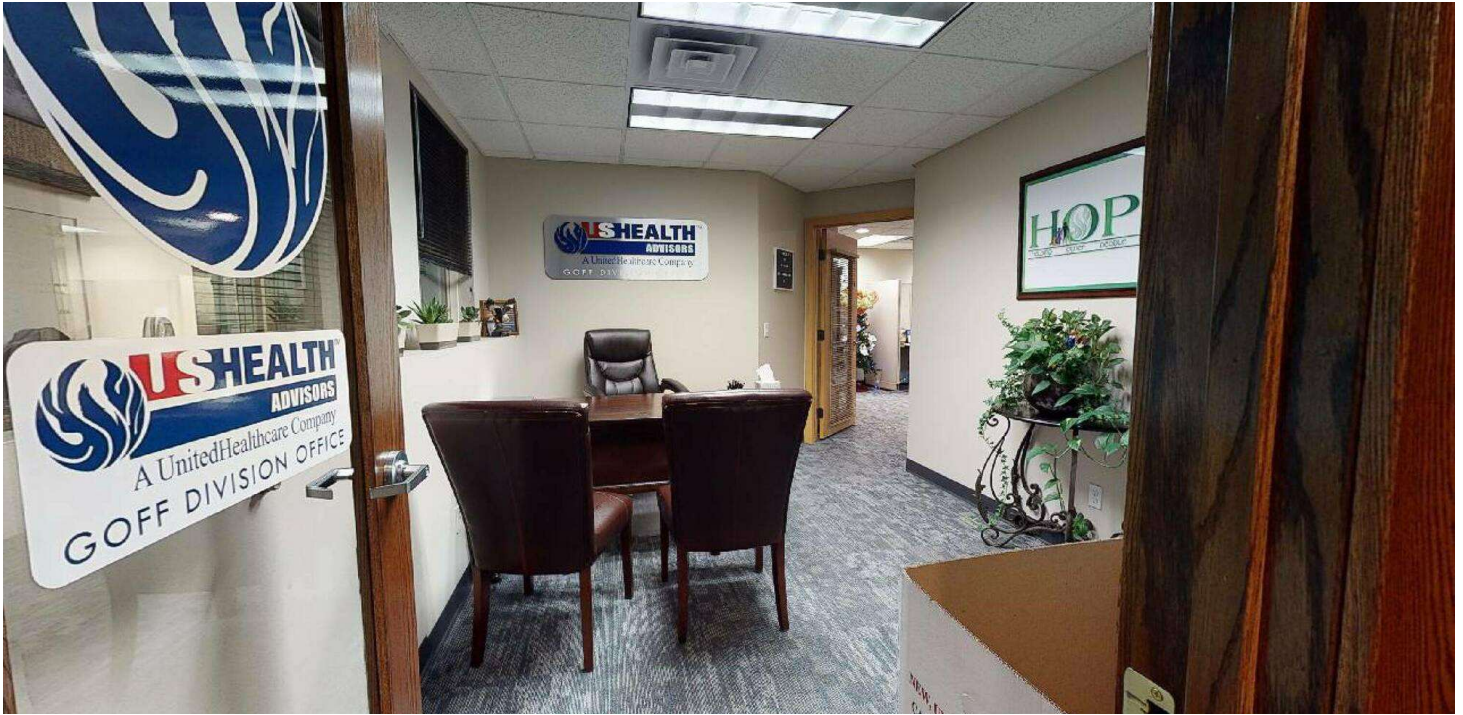
©2023 Coldwell Banker. All Rights Reserved. Coldwell Banker Commercial® and the Coldwell Banker Commercial logos are trademarks of Coldwell Banker Real Estate LLC. The Coldwell Banker® System is comprised of company owned offices which are owned by a subsidiary of Anywhere Advisors LLC and franchised offices which are independently owned and operated. The Coldwell Banker System fully supports the principles of the Equal Opportunity Act.



**COLDWELL BANKER  
COMMERCIAL**  
CBS

# LEASE

**1555 CAMPUS WAY, STE D & E**  
1555 Campus Way, Ste D & E Billings, MT 59102



Lease Rate

**\$4,929.00  
PER MONTH**

## OFFERING SUMMARY

Available SF:	2,818 SF
Zoning:	PUD-Planned Unit Development
Price PSF	\$15 NNN
NNN	\$5.99 SF

## PROPERTY OVERVIEW

2,818 SF Office For Lease  
8 Private Offices  
Reception Area  
Bullpen/Cubicle Space  
Conference Room  
Breakroom  
Copy Room  
1 Private Restroom & 2 Common Area Restrooms  
Storage Room

NOTE: Can Be Leased as 2 Separate 1,037 SF and 1,781 SF Office Spaces

## LOCATION OVERVIEW

1555 Campus Way is a Class A professional office building located in midtown Billings, MT. With new carpet, rich wood finishes and traditional office layout, this space is ideal for accountants, attorneys, architects, engineers, insurance agents or any professional services firm that needs a layout with predominantly private offices. 1555 Campus Way is located in a professional office park adjacent to a beautiful park for those employees who wish to take their lunch break outside.

**Nathan Matelich, CCIM**  
(406) 781-6889

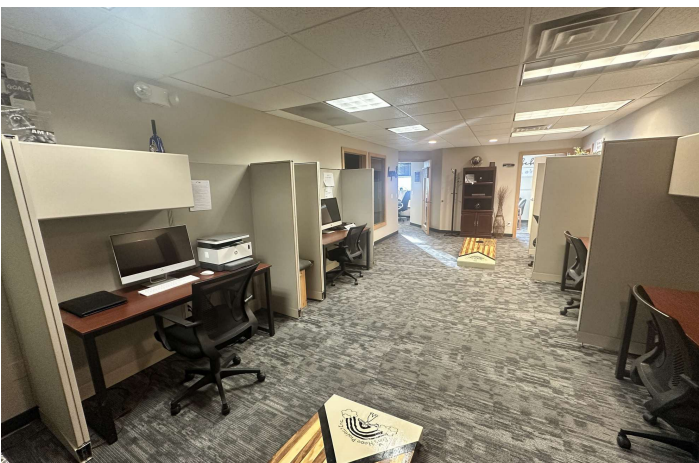
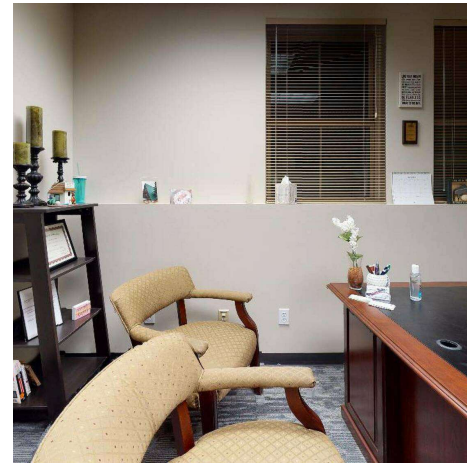
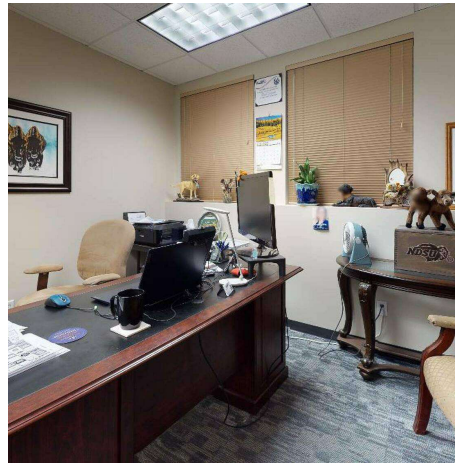


**COLDWELL BANKER  
COMMERCIAL**  
CBS



# LEASE

**1555 CAMPUS WAY, STE D & E**  
1555 Campus Way, Ste D & E Billings, MT 59102



**Nathan Matelich, CCIM**  
(406) 781-6889



**COLDWELL BANKER  
COMMERCIAL**  
CBS



# LEASE

**1555 CAMPUS WAY, STE D & E**  
1555 Campus Way, Ste D & E Billings, MT 59102



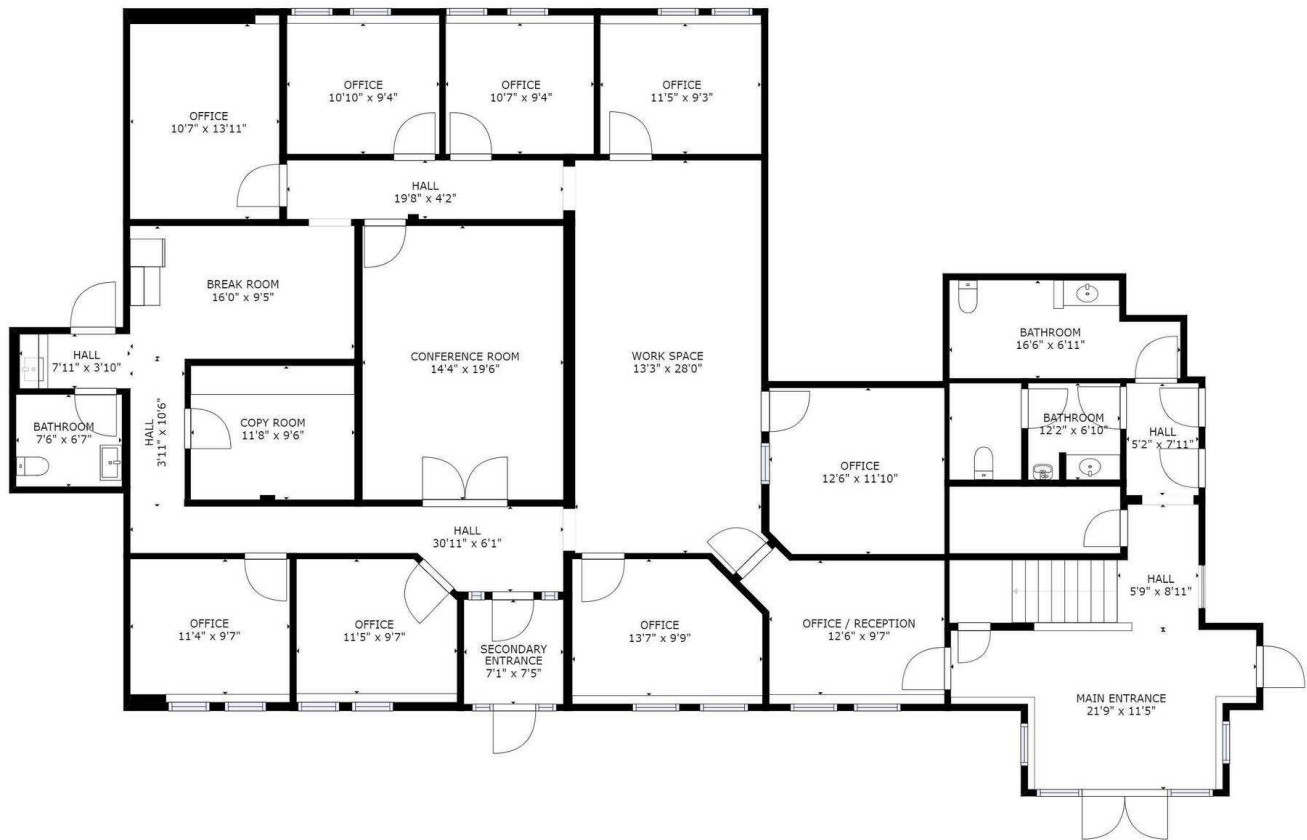
**Nathan Matelich, CCIM**  
(406) 781-6889



**COLDWELL BANKER  
COMMERCIAL**  
CBS

# LEASE

**1555 CAMPUS WAY, STE D & E**  
1555 Campus Way, Ste D & E Billings, MT 59102



FLOOR 1

GROSS INTERNAL AREA  
FLOOR 1: 3210 sq. ft  
TOTAL: 3210 sq. ft  
SIZES AND DIMENSIONS ARE APPROXIMATE, ACTUAL MAY VARY.



**Nathan Matelich, CCIM**  
(406) 781-6889

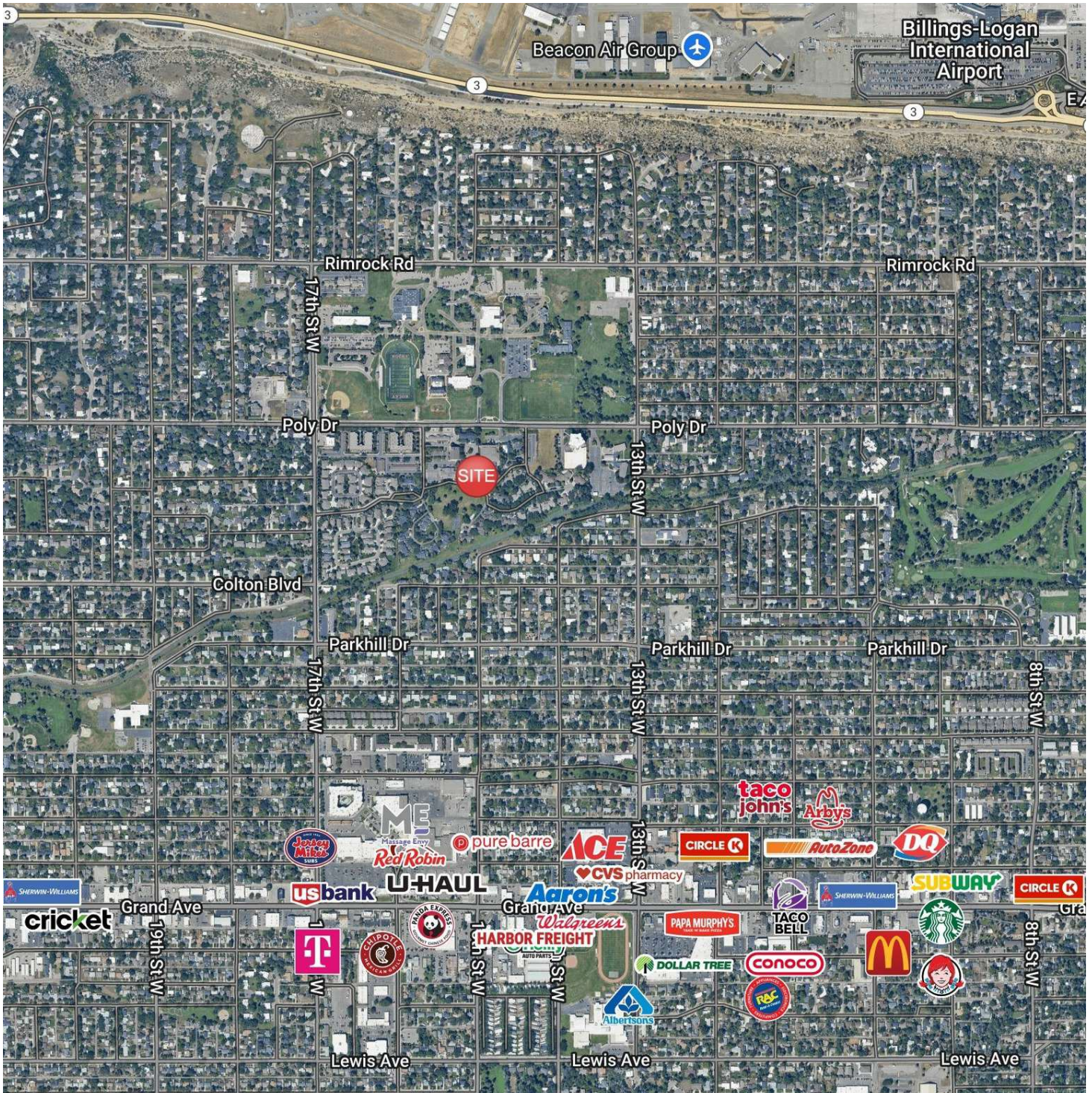


**COLDWELL BANKER  
COMMERCIAL**  
CBS



# LEASE

**1555 CAMPUS WAY, STE D & E**  
1555 Campus Way, Ste D & E Billings, MT 59102



**Nathan Matelich, CCIM**  
(406) 781-6889

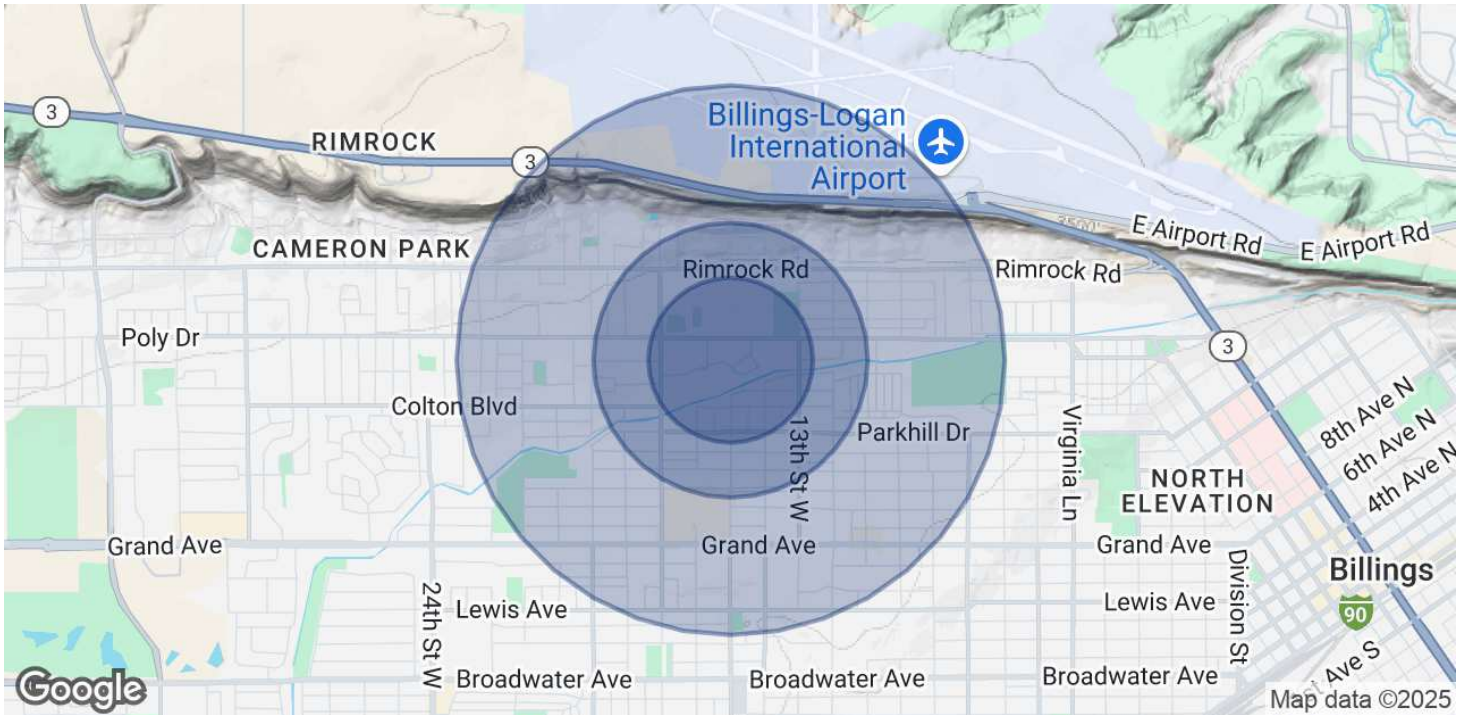


**COLDWELL BANKER  
COMMERCIAL**  
CBS



# LEASE

**1555 CAMPUS WAY, STE D & E**  
1555 Campus Way, Ste D & E Billings, MT 59102



## POPULATION

	0.3 MILES	0.5 MILES	1 MILE
Total Population	1,316	3,545	11,381
Average Age	43	42	41
Average Age (Male)	41	40	40
Average Age (Female)	45	43	42

## HOUSEHOLDS & INCOME

	0.3 MILES	0.5 MILES	1 MILE
Total Households	603	1,503	4,910
# of Persons per HH	2.2	2.4	2.3
Average HH Income	\$113,969	\$116,586	\$110,766
Average House Value	\$501,155	\$492,505	\$442,044

Demographics data derived from AlphaMap

**Nathan Matelich, CCIM**  
(406) 781-6889



**COLDWELL BANKER  
COMMERCIAL**  
CBS