

LEASE

2223 MONTANA AVE

2223 Montana Ave Billings, MT 59101



LEASE RATE

\$1,495.00 - \$8,638.00 per month

Nathan Matelich, CCIM
(406) 781-6889

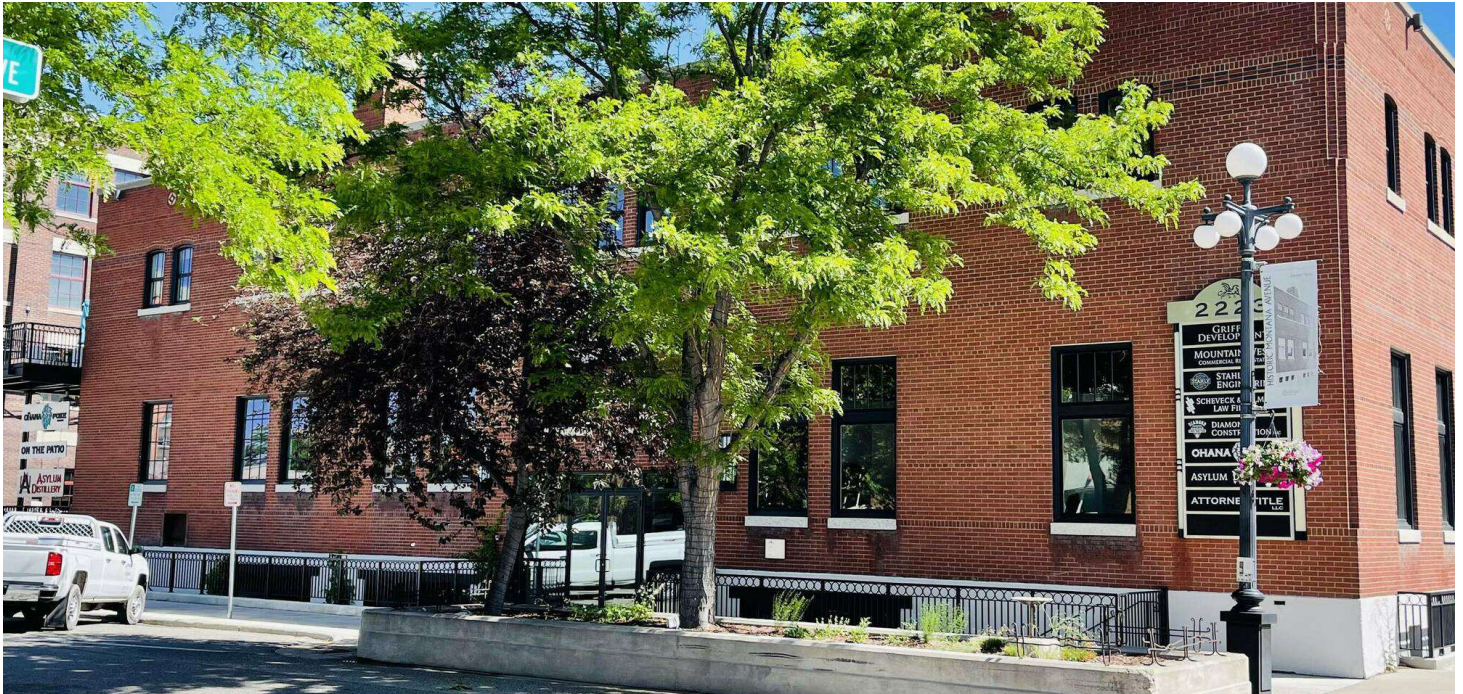
Erik Caseres
(406) 861-4742

©2023 Coldwell Banker. All Rights Reserved. Coldwell Banker Commercial® and the Coldwell Banker Commercial logos are trademarks of Coldwell Banker Real Estate LLC. The Coldwell Banker® System is comprised of company owned offices which are owned by a subsidiary of Anywhere Advisors LLC and franchised offices which are independently owned and operated. The Coldwell Banker System fully supports the principles of the Equal Opportunity Act.



LEASE

2223 MONTANA AVE
2223 Montana Ave Billings, MT 59101



Lease Rate
**\$1,495.00 -
\$8,638.00
PER MONTH**

OFFERING SUMMARY

Building Size:	24,075 SF
Available SF:	1,442 - 4,680 SF
Lot Size:	9,428 SF
Zoning:	CBD – Central Business District

PROPERTY OVERVIEW

- *Multiple suites available ranging from 1,442 - 4,680 SF
- *Monthly lease rates from \$1,495 - \$8,638/month
- *Multiple suites available each with unique characteristics to satisfy a wide range of businesses
- *Potential uses include Office, Retail, Restaurant and Industrial
- *Historic building boasting old world charm coupled with modern high-end industrial finishes
- *Highly desirable downtown location offering clients and customers a wide variety of entertainment opportunities
- *Dedicated parking
- *Pricing ranges from \$8.29 - \$18.00 SF NNN
- *NNN estimated at \$4.15 SF (Includes Utilities)
- *Zoned CBD – Central Business District
- *Total building square footage is 24,075 SF

Nathan Matelich, CCIM
(406) 781-6889

Erik Caseres
(406) 861-4742



**COLDWELL BANKER
COMMERCIAL**
CBS

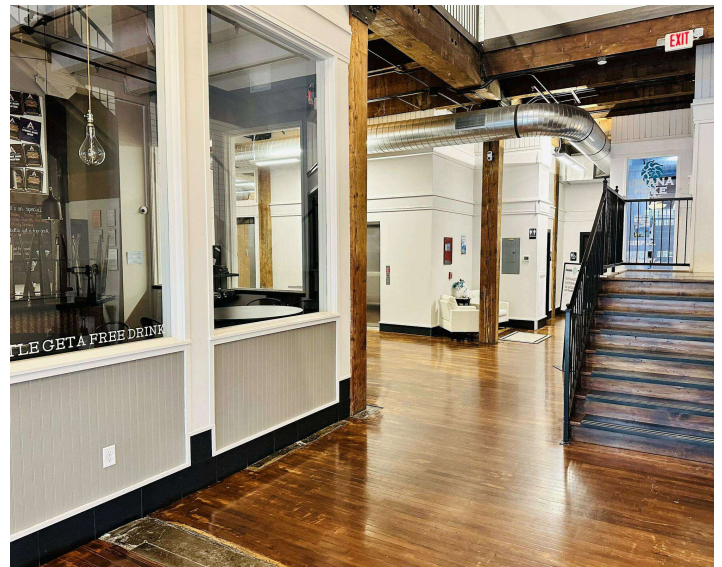
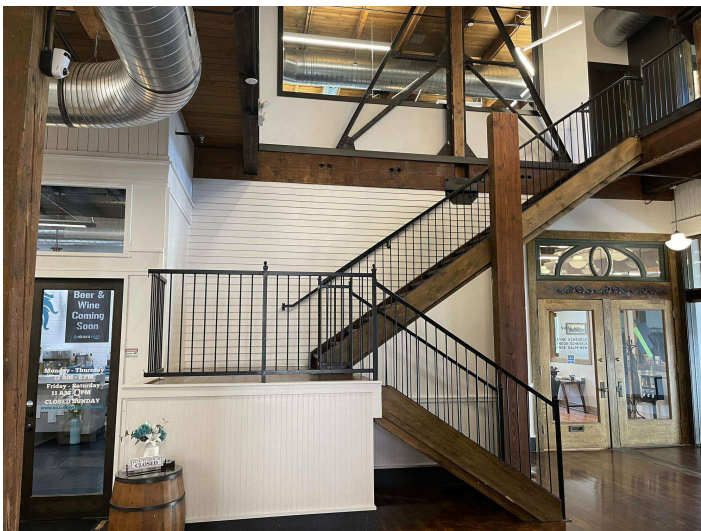
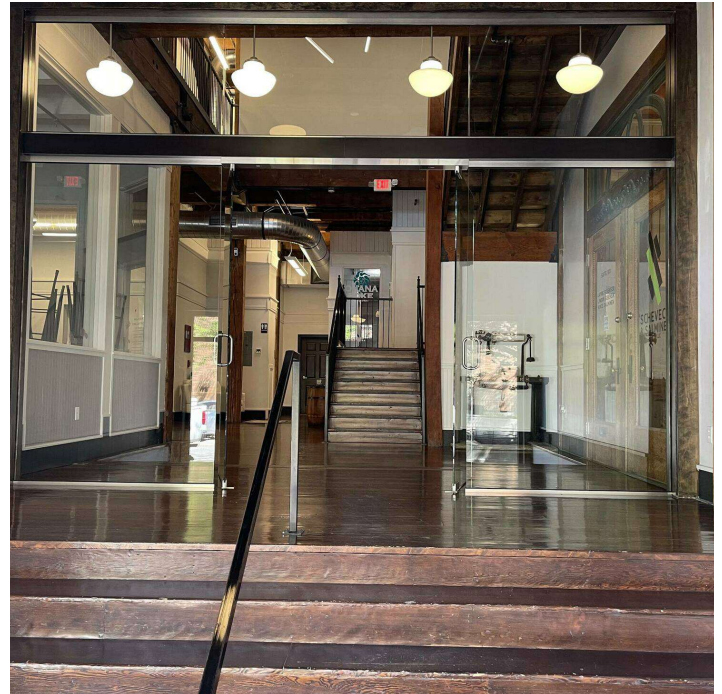
LEASE

2223 MONTANA AVE
2223 Montana Ave Billings, MT 59101

LISTING OVERVIEW:

This historic building offers unparalleled class with contemporary industrial finishes. The building is ideally situated downtown offering clients, customers and employees a wide array of amenities including entertainment, shopping, restaurants and breweries. The recent renovations were meticulously planned and flawlessly executed to ensure that each aspect of the buildings traditional architecture was not only left intact, but perfectly highlighted to retain its vintage charm. Additionally, the high-end industrial style finishes compliment the antiquated elements of the structure providing the perfect balance of old and new.

Major tenants include Griffin Development, The Asylum Distillery and Stahly Engineering. Multiple suites are available to accommodate a wide range of businesses.



Nathan Matelich, CCIM
(406) 781-6889

Erik Caseres
(406) 861-4742



**COLDWELL BANKER
COMMERCIAL**
CBS

LEASE

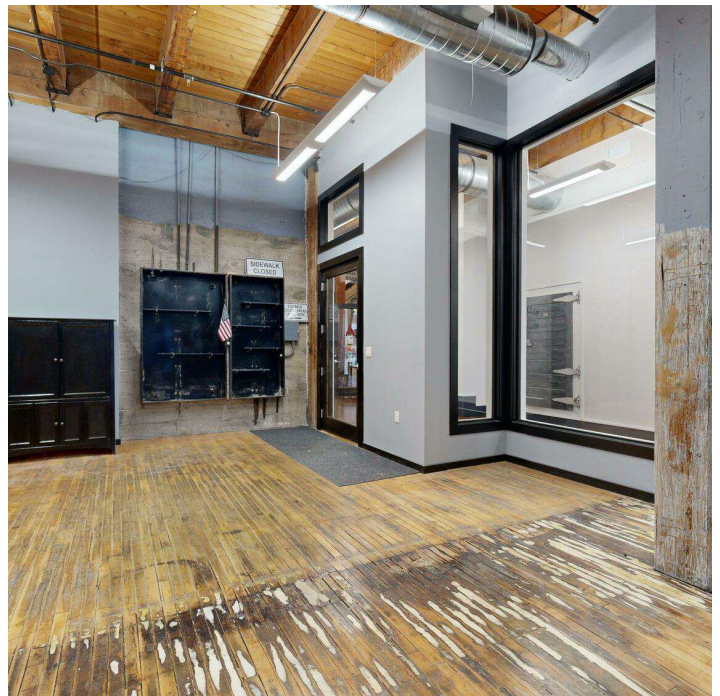
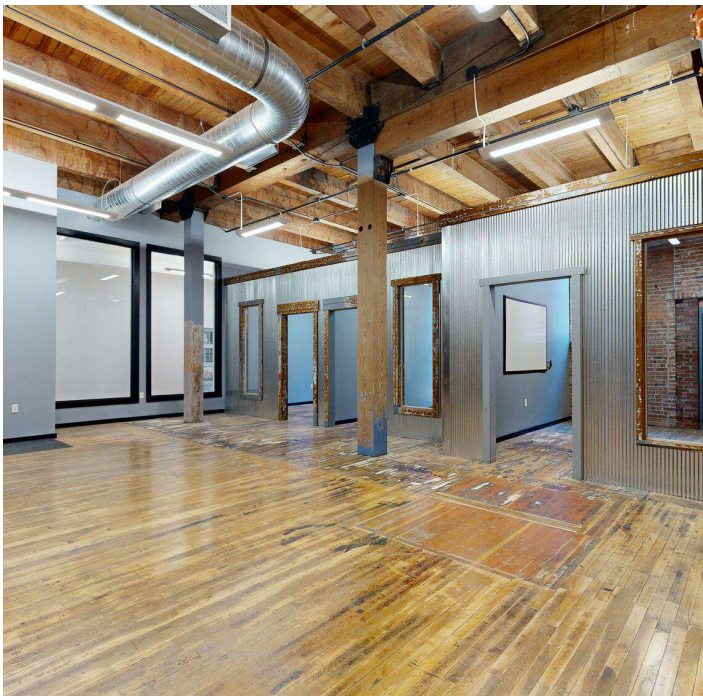
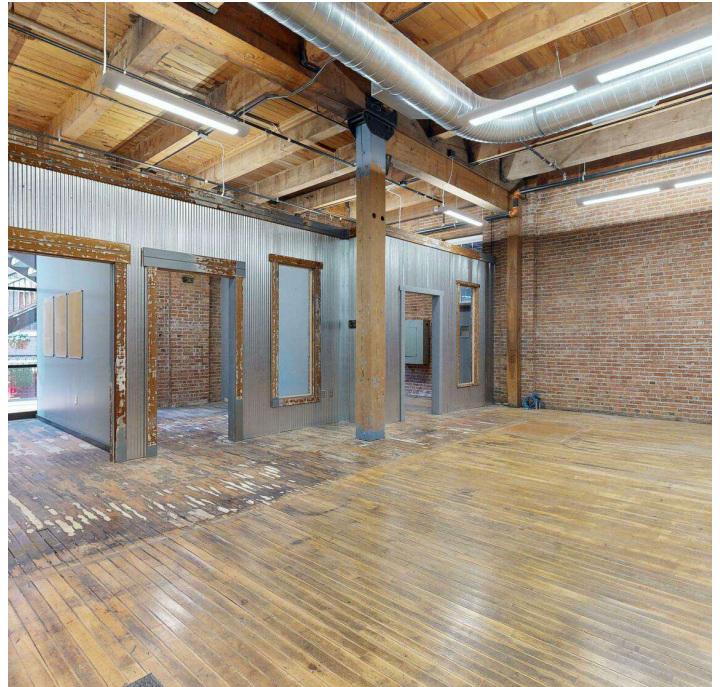
2223 MONTANA AVE
2223 Montana Ave Billings, MT 59101

SUITE 102

1,750 SF of professional office space offered at \$2,938/month (utilities included). The space includes three private offices, a common area and reception. This suite is equipped with high wood-beamed ceilings, custom wood framed windows & doors along with brick accented walls. Plumbing connections are also pre-installed to facilitate the addition of sink fixtures.

This space would be ideal for any professional service industry provider such as a law firm, CPA, Clinical therapists, etc. but could also be used for non-traditional office users.

Base rent is \$16.00 SF plus \$4.15 NNN.



Nathan Matelich, CCIM
(406) 781-6889

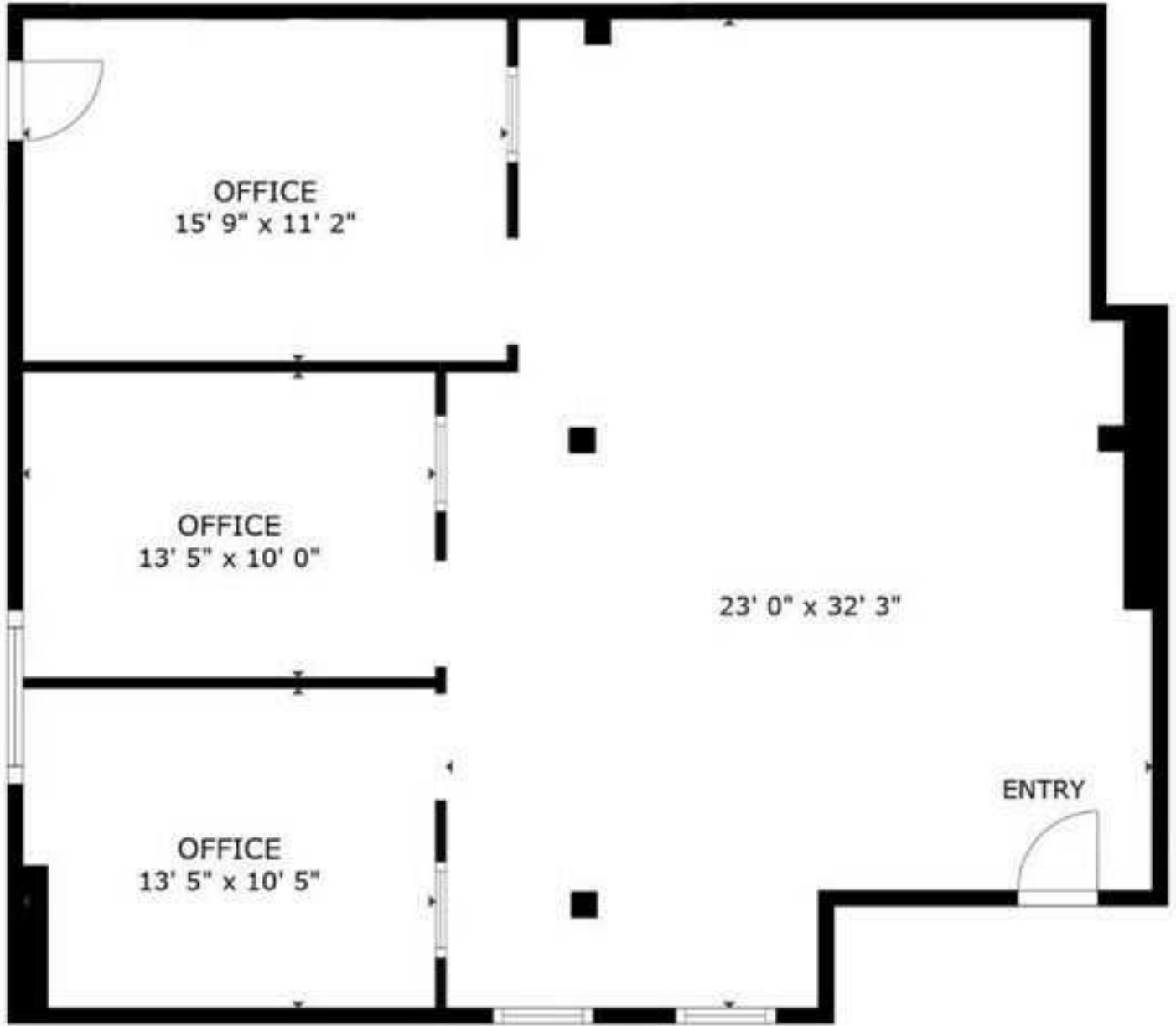
Erik Caseres
(406) 861-4742



**COLDWELL BANKER
COMMERCIAL**
CBS

LEASE

2223 MONTANA AVE
2223 Montana Ave Billings, MT 59101



FLOOR PLAN

Nathan Matelich, CCIM
(406) 781-6889

Erik Caseres
(406) 861-4742



**COLDWELL BANKER
COMMERCIAL**
CBS

LEASE

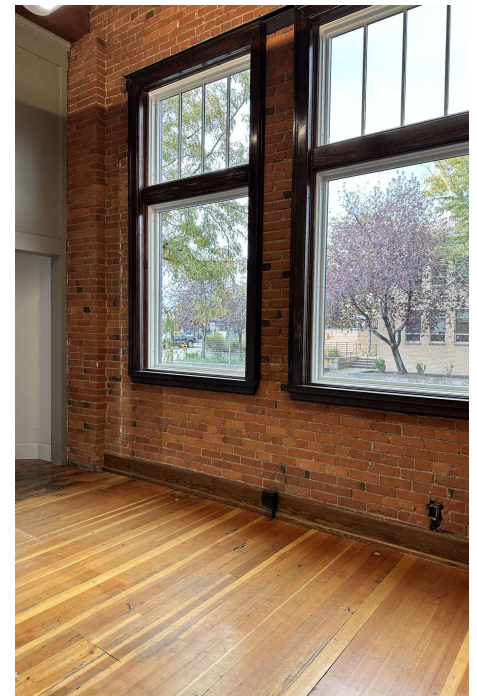
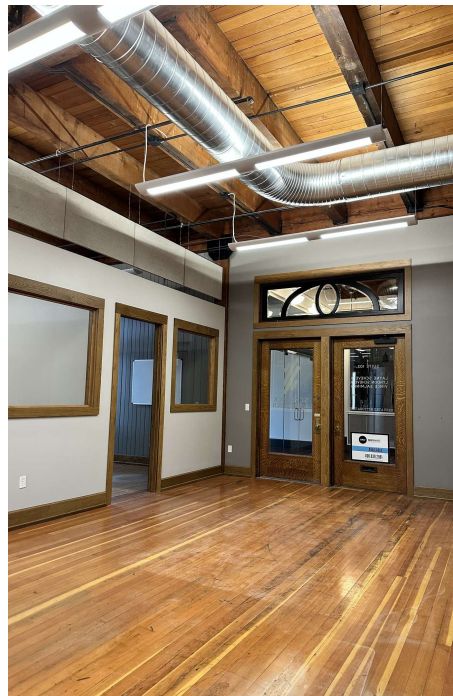
2223 MONTANA AVE
2223 Montana Ave Billings, MT 59101

SUITE 103

1,750 SF of professional office space offered at \$2,938/month (utilities included). The space includes four private offices, a common area and reception. This suite is equipped with high wood-beamed ceilings, custom wood framed windows & doors along with brick accented walls.

This space would be ideal for any professional service industry provider such as a law firm, CPA, Clinical therapists, etc.

Base rent is \$16.00 SF plus \$4.15 NNN.



Nathan Matelich, CCIM
(406) 781-6889

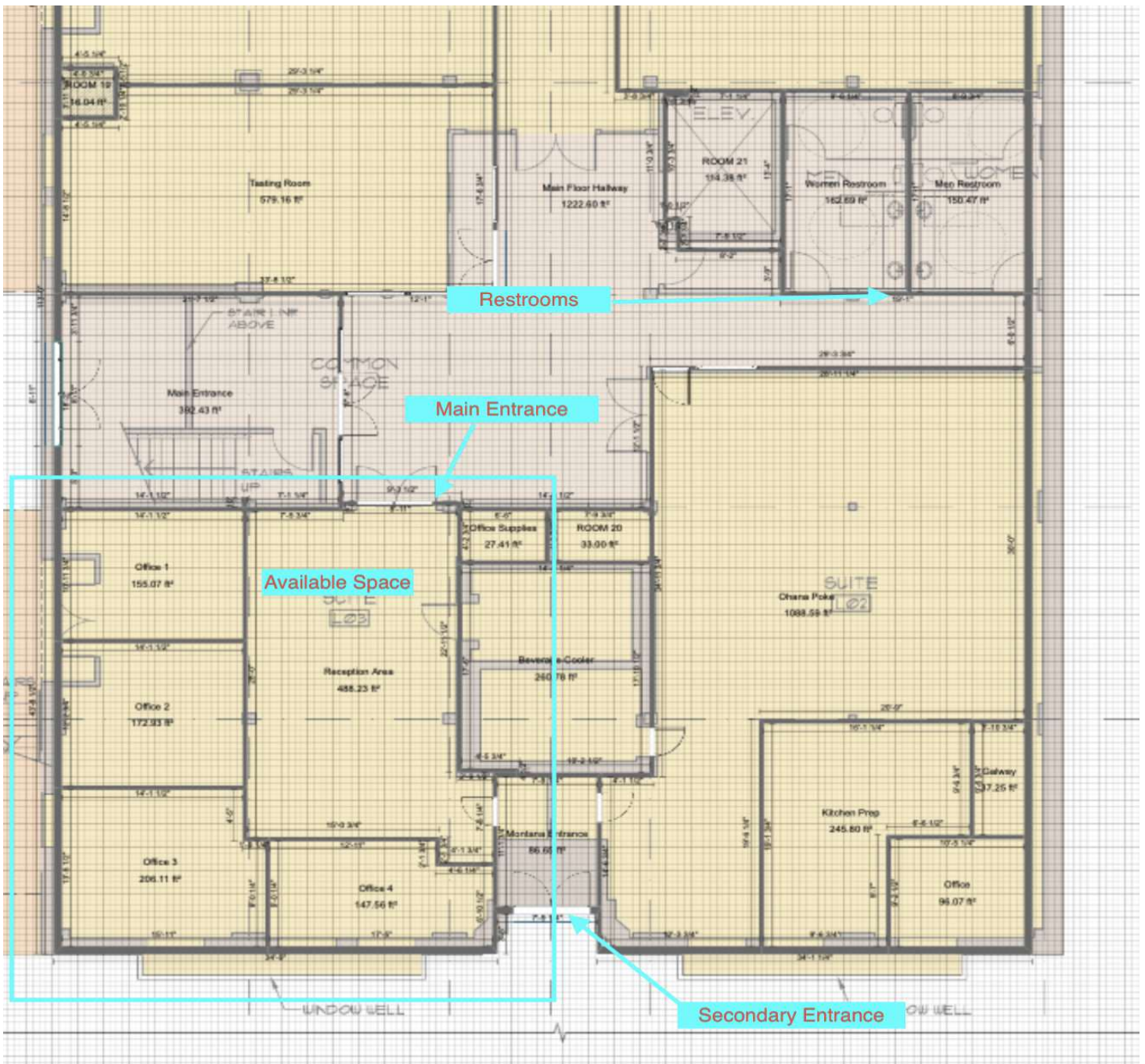
Erik Caseres
(406) 861-4742



**COLDWELL BANKER
COMMERCIAL**
CBS

LEASE

2223 MONTANA AVE
2223 Montana Ave Billings, MT 59101



Nathan Matelich, CCIM
(406) 781-6889

Erik Caseres
(406) 861-4742



COLDWELL BANKER
COMMERCIAL
CBS

LEASE

2223 MONTANA AVE

2223 Montana Ave Billings, MT 59101

SUITE 104

This 1,750 SF suite is offered at \$2,647/month (utilities included) and it is ideal for any business owner in the food or beverage industry.

The suite was previously occupied by Ohana Poke and includes painted wood flooring, white subway tiled accents and cool toned paint colors. The space is currently configured with multiple dining areas, coolers, and a small restaurant style kitchen excluding a hood.

Base rent is \$14.00/sf plus \$4.15 NNN.



Nathan Matelich, CCIM
(406) 781-6889

Erik Caseres
(406) 861-4742



**COLDWELL BANKER
COMMERCIAL**
CBS

LEASE

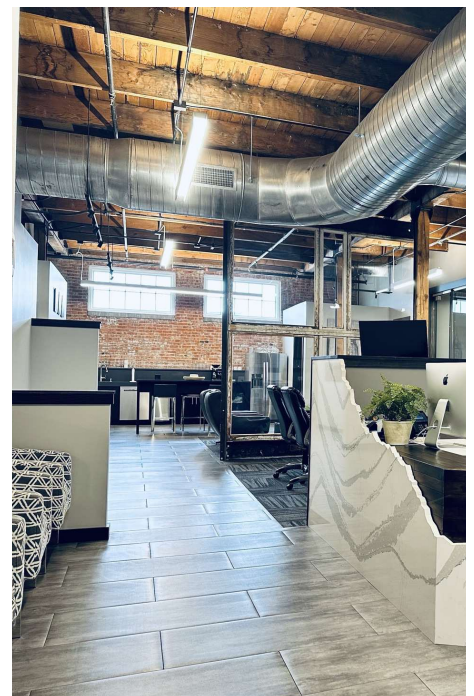
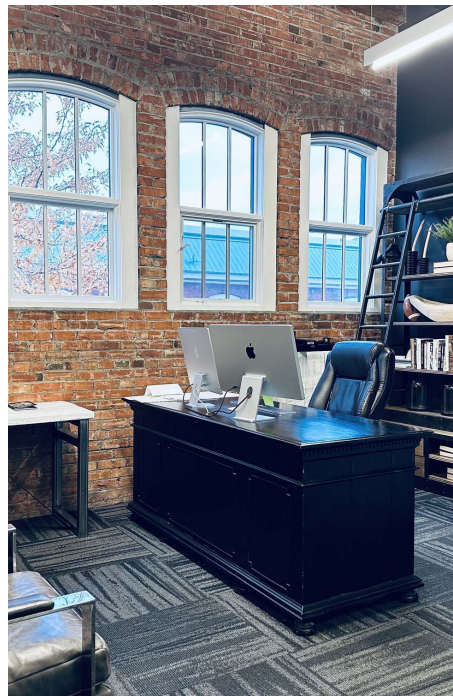
2223 MONTANA AVE
2223 Montana Ave Billings, MT 59101

SUITE 203

This 4,680 SF upstairs suite is offered at \$8,638/month. The suite is currently occupied by Mountain West Real Estate and includes ten private offices, one private conference room, a common area for group meetings/lounging and is complete with an elegant kitchenette.

The unique features of the building are highlighted throughout the suite and include numerous rustic wood beams, brick accent walls and industrial style ceilings. The high-end finishes in this suite are sure to impress clients and customers who visit these exclusive executive-style offices.

Base rent is \$18.00 SF plus \$4.15 NNN.



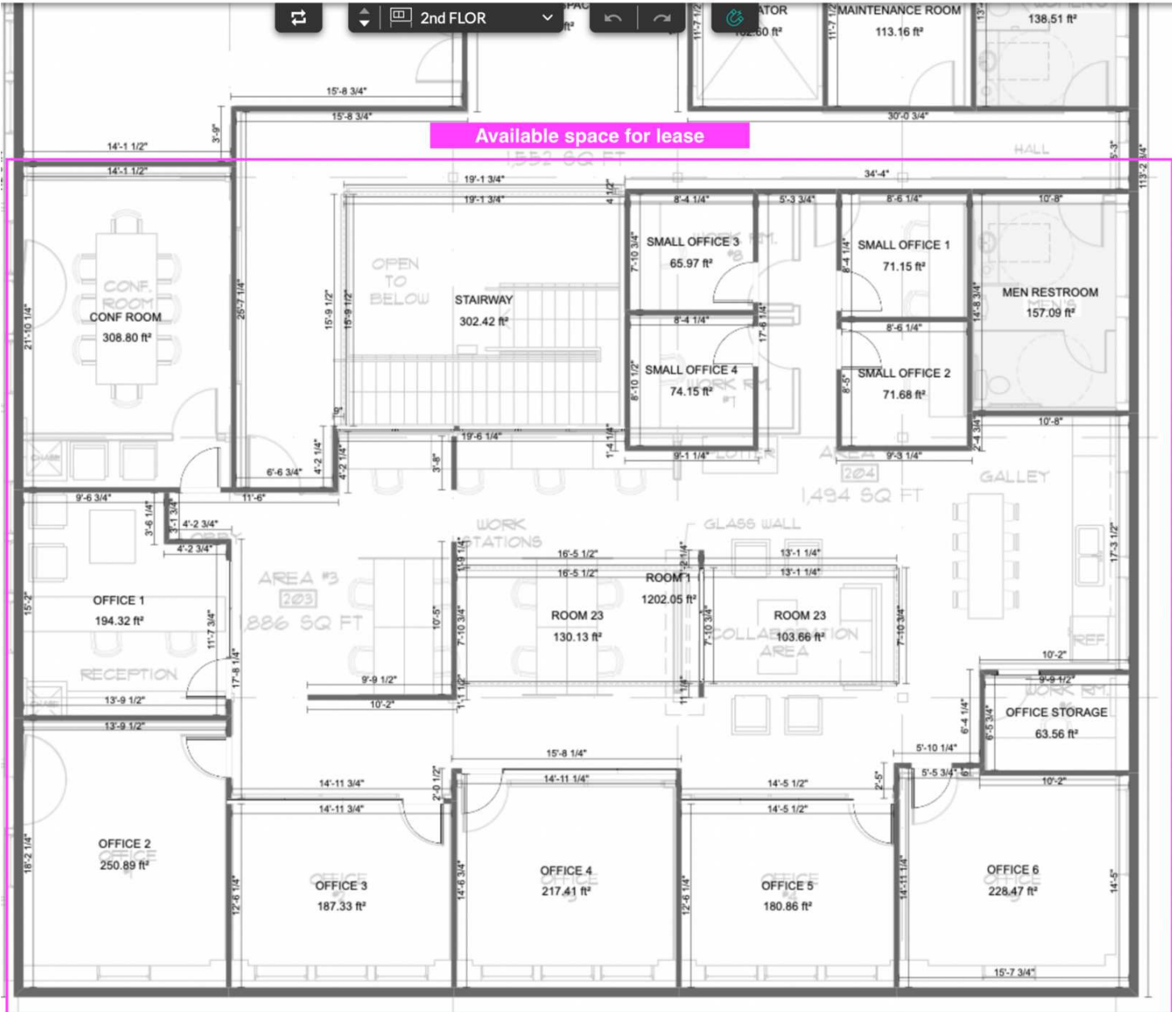
Nathan Matelich, CCIM
(406) 781-6889

Erik Caseres
(406) 861-4742



**COLDWELL BANKER
COMMERCIAL**
CBS

Suite 203 Floorplan



Nathan Matelich, CCIM
(406) 781-6889

Erik Caseres
(406) 861-4742



**COLDWELL BANKER
COMMERCIAL**
CBS

LEASE

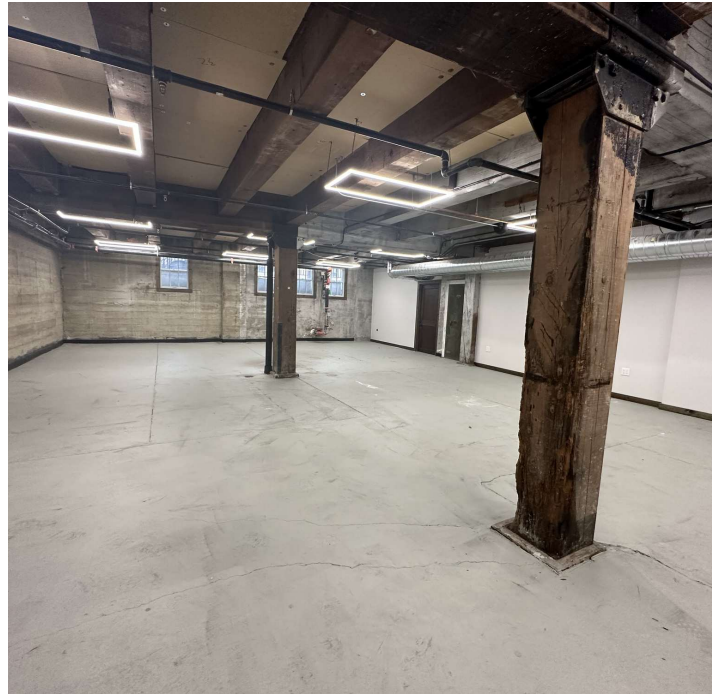
2223 MONTANA AVE
2223 Montana Ave Billings, MT 59101

SUITE L01

This lower-level suite provides more flexibility for creative entrepreneurs and the artistic type of small business owner. The common areas associated with the basement have been fully renovated while the suites themselves have been minimally restored to provide flexible use opportunities for the imaginative business owner who can ascertain inspiration from the traditional architectural elements of these well-preserved spaces.

This lower portion of the building is equipped with a separate exterior entrance but can also be accessed via the elevator from the main entrance to the building.

L01 is 1,442 SF unit offered for \$1,495/mo.
Base rent is \$8.29 SF plus \$4.15 NNN.



Nathan Matelich, CCIM
(406) 781-6889

Erik Caseres
(406) 861-4742



**COLDWELL BANKER
COMMERCIAL**
CBS

LEASE

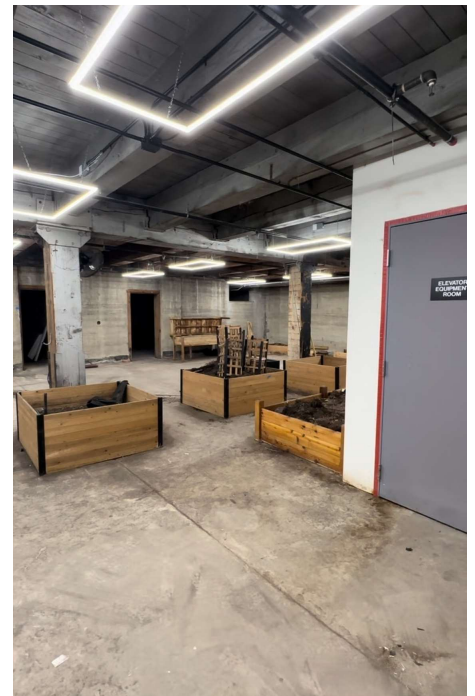
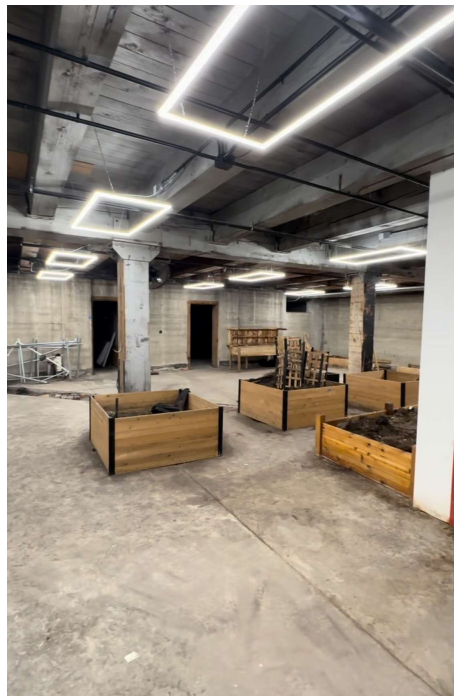
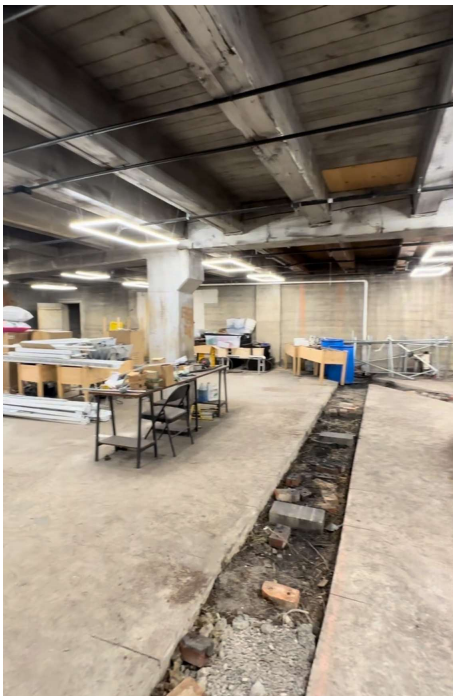
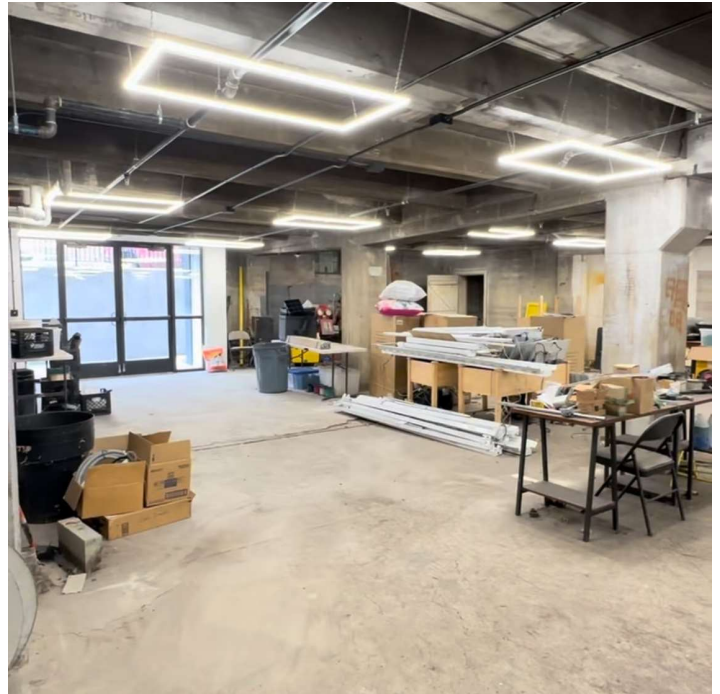
2223 MONTANA AVE
2223 Montana Ave Billings, MT 59101

SUITE L02

Ideal for creative entrepreneurs and artistic small business owners, this lower-level suite offers flexibility and inspiration. The renovated common areas and minimally restored suites preserve traditional architectural elements, providing a unique canvas for innovative thinkers.

The space features a separate exterior entrance, as well as elevator access from the main building entrance, offering convenience and autonomy.

L02 is 4,330 SF unit offered for \$4,384/mo.
Base rent is \$8 SF plus \$4.15 NNN.



Nathan Matelich, CCIM
(406) 781-6889

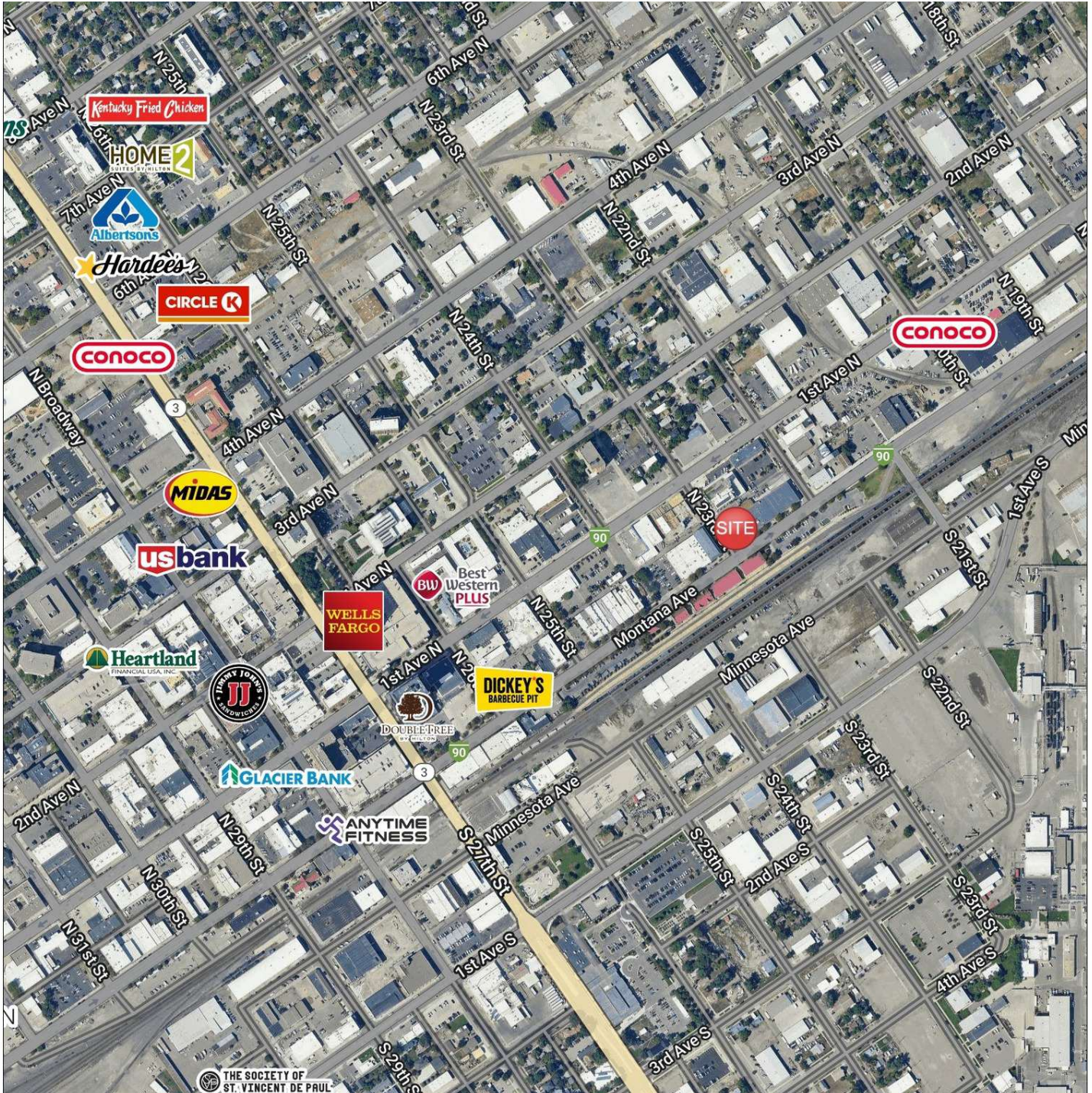
Erik Caseres
(406) 861-4742



**COLDWELL BANKER
COMMERCIAL**
CBS

LEASE

2223 MONTANA AVE
2223 Montana Ave Billings, MT 59101



Nathan Matelich, CCIM
(406) 781-6889

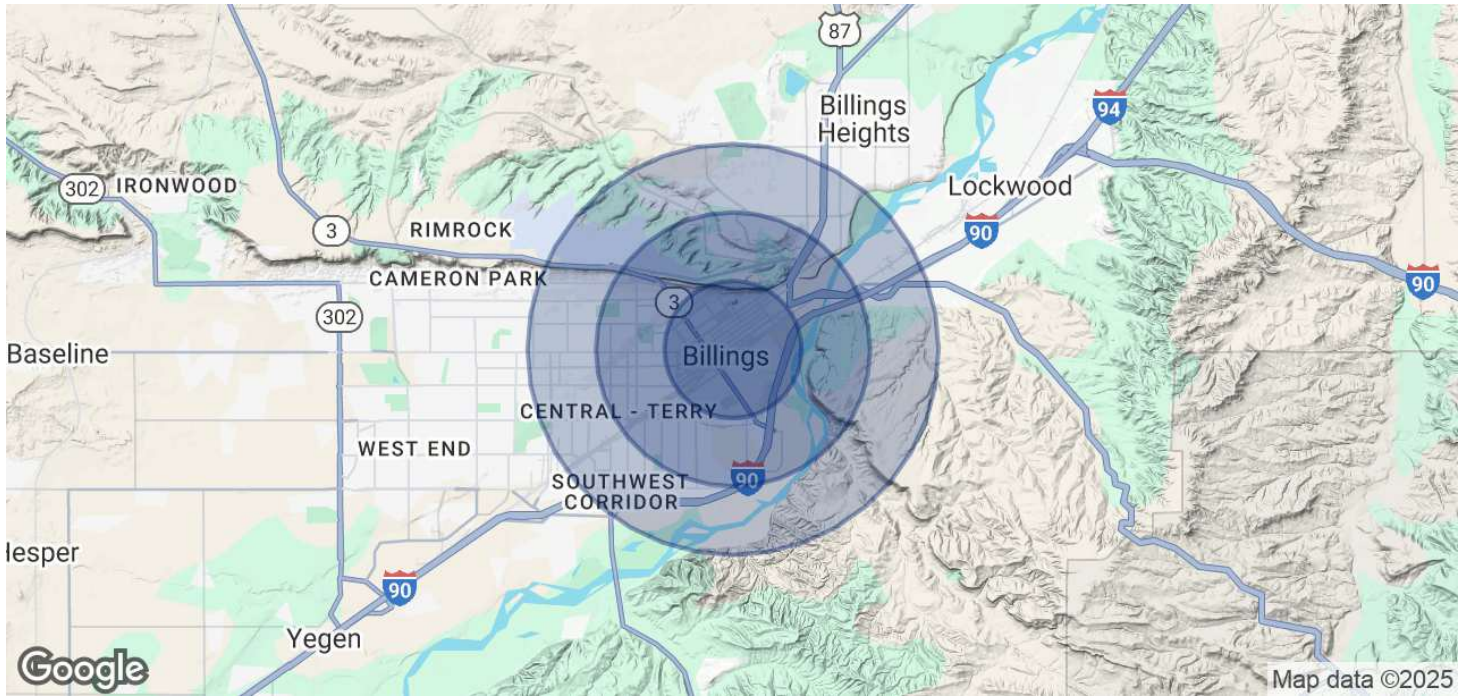
Erik Caseres
(406) 861-4742



COLDWELL BANKER
COMMERCIAL
CBS

LEASE

2223 MONTANA AVE
2223 Montana Ave Billings, MT 59101



POPULATION	1 MILE	2 MILES	3 MILES
Total Population	6,889	25,641	49,791
Average Age	34.8	34.3	35.6
Average Age (Male)	33.6	32.8	34.2
Average Age (Female)	36.7	36.6	37.4

HOUSEHOLDS & INCOME	1 MILE	2 MILES	3 MILES
Total Households	3,782	12,303	23,848
# of Persons per HH	1.8	2.1	2.1
Average HH Income	\$41,849	\$54,305	\$59,966
Average House Value	\$153,481	\$189,854	\$192,986

2020 American Community Survey (ACS)

Nathan Matelich, CCIM
(406) 781-6889

Erik Caseres
(406) 861-4742



**COLDWELL BANKER
COMMERCIAL**
CBS