

# LEASE

## SOLAR PLAZA

2108 Broadwater Ave, Unit 104, Billings, MT 59102



**LEASE RATE**

\$875 per month

**SIZE**

656 sf

**Nathan Matelich, CCIM**

406.781.6889

©2023 Coldwell Banker. All Rights Reserved. Coldwell Banker Commercial® and the Coldwell Banker Commercial logos are trademarks of Coldwell Banker Real Estate LLC. The Coldwell Banker® System is comprised of company owned offices which are owned by a subsidiary of Anywhere Advisors LLC and franchised offices which are independently owned and operated. The Coldwell Banker System fully supports the principles of the Equal Opportunity Act.



# LEASE

## SOLAR PLAZA

2108 Broadwater Ave Billings, MT 59102



Lease Rate

**\$875.00  
PER MONTH**

### OFFERING SUMMARY

Building Size:	23,316 sf
Available SF:	656 sf
Lot Size:	31,905 sf
Year Built:	1980
Zoning:	NO-Neighborhood Office

### PROPERTY OVERVIEW

- \*656 sf Office for Lease
- \*\$875/mo (Utilities and Internet Included)
- \*2 Private Offices
- \*Storage Closet
- \*Large Reception Area
- \*Recently Renovated Common Area Restrooms
- \*Tons of Natural Lights from Windows

### LOCATION OVERVIEW

West End Billings landmark office complex with multiple separate office suites for lease ranging from 220 to 750 sf. Solar Plaza gets its name from the 180 original solar panels that are mounted on the south side of the building to provide ancillary heat during the winter months. Many recent improvements include HVAC, luxury vinyl plank flooring, LED lighting, updated restrooms and new paint. If you are looking for a quiet and professional space to work with private balconies, vaulted ceilings, great lighting, sky lights and tranquil garden areas, this is the right office complex for you!

NOTE: Owner is a licensed real estate agent in the State of Montana.

**Nathan Matelich, CCIM**  
406.781.6889



**COLDWELL BANKER  
COMMERCIAL**  
CBS

# LEASE

## SOLAR PLAZA

2108 Broadwater Ave Billings, MT 59102



**Nathan Matelich, CCIM**  
406.781.6889



**COLDWELL BANKER  
COMMERCIAL**  
CBS

# LEASE

**SOLAR PLAZA**  
2108 Broadwater Ave Billings, MT 59102



**Nathan Matelich, CCIM**  
406.781.6889

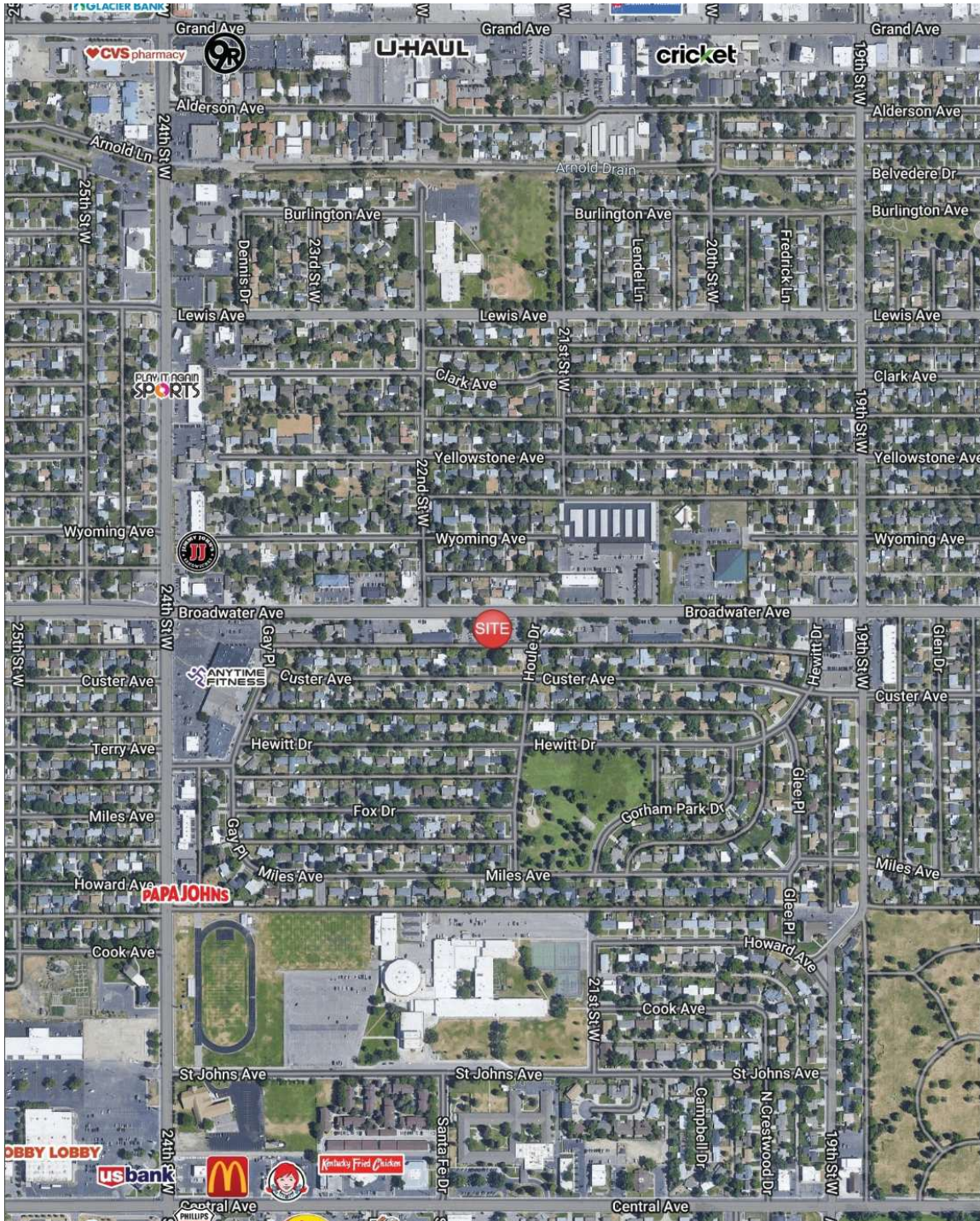


**COLDWELL BANKER  
COMMERCIAL**  
CBS

# LEASE

# SOLAR PLAZA

2108 Broadwater Ave Billings, MT 59102



**Nathan Matelich, CCIM**  
406.781.6889

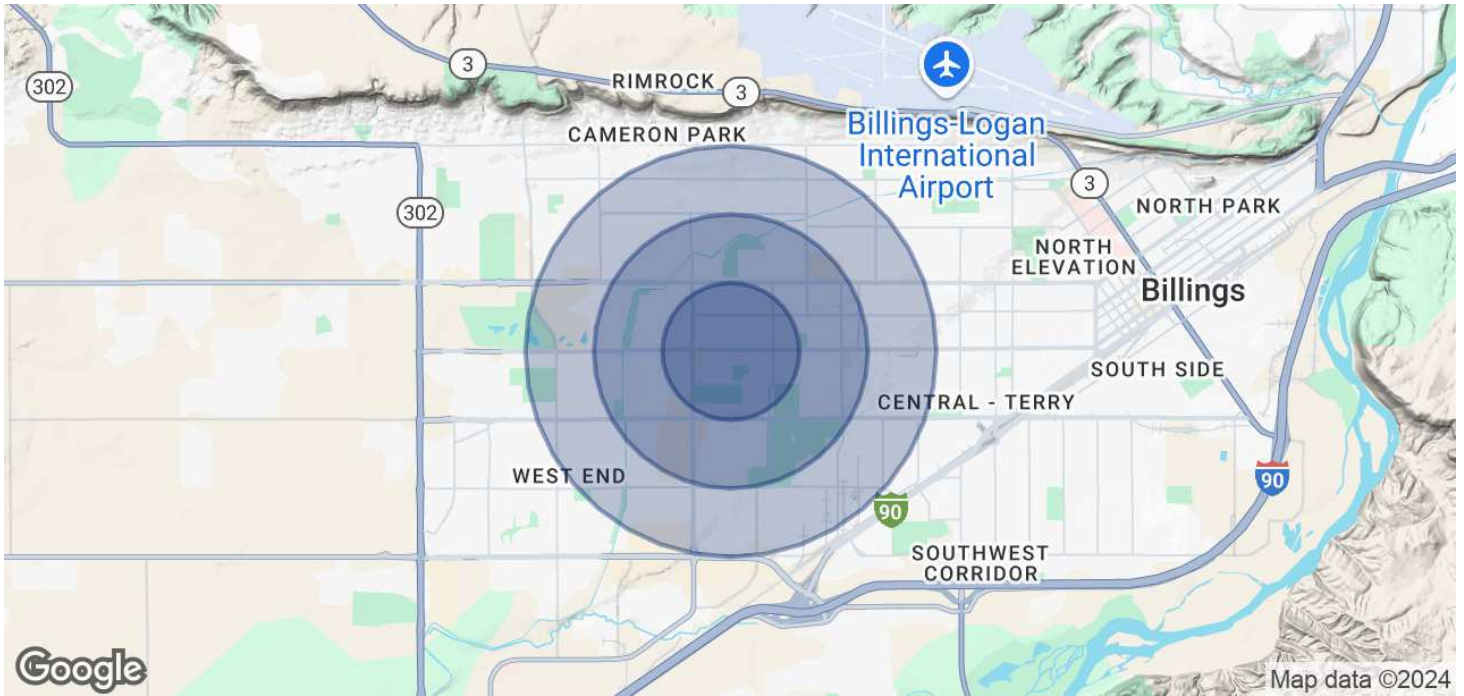


**COLDWELL BANKER  
COMMERCIAL**  
CBS

# LEASE

## SOLAR PLAZA

2108 Broadwater Ave Billings, MT 59102



<b>POPULATION</b>	<b>0.5 MILES</b>	<b>1 MILE</b>	<b>1.5 MILES</b>
Total Population	2,787	10,643	23,661
Average Age	39.5	42.3	42.4
Average Age (Male)	34.6	39.1	39.1
Average Age (Female)	43.7	44.6	44.6

<b>HOUSEHOLDS &amp; INCOME</b>	<b>0.5 MILES</b>	<b>1 MILE</b>	<b>1.5 MILES</b>
Total Households	1,367	5,248	11,707
# of Persons per HH	2	2	2
Average HH Income	\$55,489	\$74,317	\$75,237
Average House Value	\$202,612	\$216,379	\$224,004

2020 American Community Survey (ACS)

**Nathan Matelich, CCIM**  
406.781.6889



**COLDWELL BANKER  
COMMERCIAL**  
CBS