

LEASE

77264 GALLATIN ROAD

77264 Gallatin Road Bozeman, MT 59718



LEASE RATE \$12,500.00 per month
SIZE 9,000 sf

Michael Speidel **Nathan Matelich, CCIM**
406 601 9695 406 781 6889

©2023 Coldwell Banker. All Rights Reserved. Coldwell Banker Commercial® and the Coldwell Banker Commercial logos are trademarks of Coldwell Banker Real Estate LLC. The Coldwell Banker® System is comprised of company owned offices which are owned by a subsidiary of Anywhere Advisors LLC and franchised offices which are independently owned and operated. The Coldwell Banker System fully supports the principles of the Equal Opportunity Act.



LEASE

77264 GALLATIN ROAD
77264 Gallatin Road Bozeman, MT 59718



Lease Rate

**\$12,500.00
PER MONTH**

OFFERING SUMMARY

Available SF:	9,000 SF
Lot Size:	1.78 Acres
Year Built:	2021
Zoning:	Outside City Limits

PROPERTY OVERVIEW

9,000 SF Shop/Warehouse for Lease
5 qty 12 ft Overhead Doors
14 ft Ceiling Height
LED Lighting
2 Bathrooms
5 qty 200 Amp Electrical Panels
Potential to Add 3 Phase Power
5 Shop Heaters
Ability to Add Office(s)
Light and Bright Shop with Lots of Windows
Built in 2021

LOCATION OVERVIEW

77264 Gallatin Rd is a new construction shop/warehouse building with tons of power. Located off of Hwy 191 in the Gallatin Gateway, this property is positioned perfectly for businesses that service Bozeman and Big Sky. Shop/warehouse space is available for immediate occupancy. New asphalt paving is scheduled for Fall 2024/Spring 2025 weather dependent. Endless opportunities with current zoning and light covenants.

Michael Speidel
406 601 9695

Nathan Matelich, CCIM
406 781 6889



**COLDWELL BANKER
COMMERCIAL**
CBS

LEASE

77264 GALLATIN ROAD
77264 Gallatin Road Bozeman, MT 59718



Michael Speidel
406 601 9695

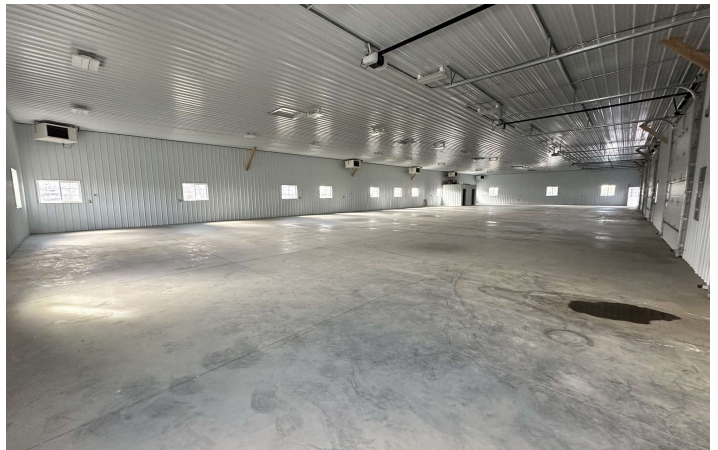
Nathan Matelich, CCIM
406 781 6889



**COLDWELL BANKER
COMMERCIAL**
CBS

LEASE

77264 GALLATIN ROAD
77264 Gallatin Road Bozeman, MT 59718



Michael Speidel
406 601 9695

Nathan Matelich, CCIM
406 781 6889

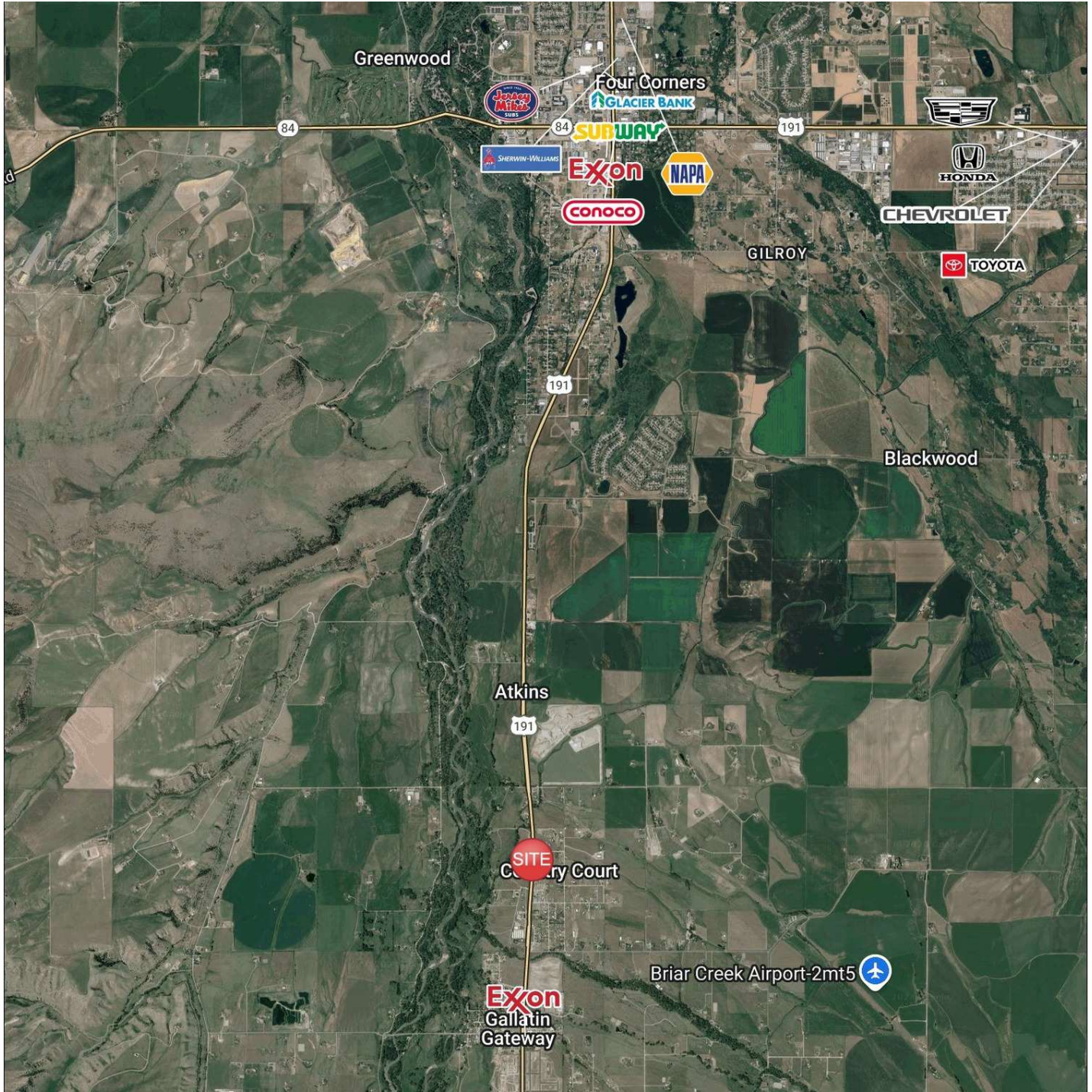


**COLDWELL BANKER
COMMERCIAL**
CBS

LEASE

77264 GALLATIN ROAD

77264 Gallatin Road Bozeman, MT 59718



Michael Speidel
406 601 9695

Nathan Matelich, CCIM
406 781 6889

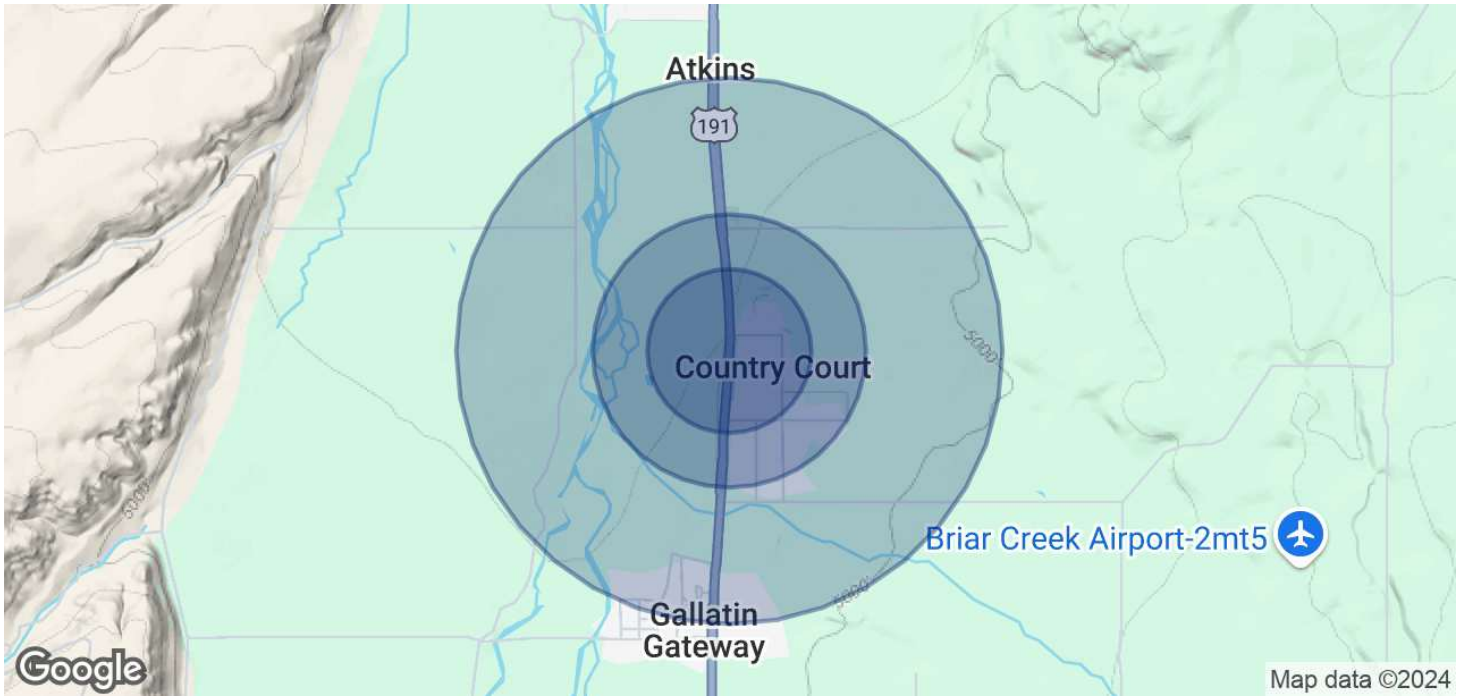


COLDWELL BANKER
COMMERCIAL
CBS

LEASE

77264 GALLATIN ROAD

77264 Gallatin Road Bozeman, MT 59718



	0.3 MILES	0.5 MILES	1 MILE
POPULATION			
Total Population	71	269	555
Average Age	40	41	43
Average Age (Male)	40	40	42
Average Age (Female)	40	41	43
HOUSEHOLDS & INCOME			
Total Households	27	105	219
# of Persons per HH	2.6	2.6	2.5
Average HH Income	\$147,680	\$147,233	\$139,474
Average House Value	\$774,411	\$813,495	\$869,184

Demographics data derived from AlphaMap

Michael Speidel
406 601 9695

Nathan Matelich, CCIM
406 781 6889



**COLDWELL BANKER
COMMERCIAL**
CBS