

# LEASE

**4025 1ST AVE S**

Billings, MT 59101



**LEASE RATE**

**\$7.20 SF/yr NNN**

**Ben Linkenhoker**

(406) 369-0815

[ben@cbcmontana.com](mailto:ben@cbcmontana.com)

©2023 Coldwell Banker. All Rights Reserved. Coldwell Banker Commercial® and the Coldwell Banker Commercial logos are trademarks of Coldwell Banker Real Estate LLC. The Coldwell Banker® System is comprised of company owned offices which are owned by a subsidiary of Anywhere Advisors LLC and franchised offices which are independently owned and operated. The Coldwell Banker System fully supports the principles of the Equal Opportunity Act.



**COLDWELL BANKER  
COMMERCIAL**  
CBS

# LEASE

**4025 1ST AVE S**

4025 1st Ave S Billings, MT 59101



## ADDITIONAL USES

- E-commerce retail
- Drop shipping facilities
- Creative studios and media production
- Research and Development
- Engineering, product design and manufacturing

## LOCATION DESCRIPTION

This versatile property features multiple overhead doors, expansive warehouse areas, and dedicated office space ideal for a wide range of uses. The flexible 6,000sf layout accommodates various business needs. Perfect for manufacturing, warehousing, 3PL logistics, and trades such as electrical, plumbing or HVAC. Ample on-site parking provides convenience for employees and customers alike. Conveniently located just minutes from Downtown Billings and the new hospital project!

## RECENT UPDATES

- Replaced overhead doors
- New roof coating with 15 year warranty
- Repaired siding and installed accent wainscot panels with new trim
- Replaced gutters
- Tree shrub & over growth removal
- Parking lot & landscape updates
- Bathroom remodel
- Interior & exterior paint
- Updated pavement, sidewalk, and widened approach
- Installed new LED interior lighting and security lights
- And many more!

## OFFERING SUMMARY

Lease Rate:	\$7.20 SF/yr (NNN)
Available SF:	6,000 SF
Building Size:	23,160 SF

**Ben Linkenhoker**  
(406) 369-0815  
ben@cbcmontana.com



**COLDWELL BANKER  
COMMERCIAL**  
CBS

# LEASE

4025 1ST AVE S

Billings, MT 59101

## Unit 4:

- 6,000 sf
- 7.20 sf/yr
- Base Rent: \$3,600/mo
- CAM's: \$1,250/mo
- Combined total: \$4,850/mo
- ~120'x50'
- 2x 14' tall overhead doors
- 1 loading dock
- Private Restroom
- ~250sf office
- new LED lights
- Fenced yard
- Semi Access
- Exposure along 1st Ave. S.
- 3 Phase Power

## LEASE INFORMATION

Lease Type:	NNN	Lease Term:	Negotiable
Total Space:	6,000 SF	Total Monthly Payment:	\$4,850 per month

## AVAILABLE SPACES

SUITE	TENANT	SIZE (SF)	LEASE TYPE	LEASE RATE: D.O.T	SIZE
Unit 4: D.O.T	Available	6,000 SF	NNN	\$7.20 SF/yr	~120'x50'

**Ben Linkenhoker**  
(406) 369-0815  
ben@cbcmontana.com



**COLDWELL BANKER  
COMMERCIAL**  
CBS



# LEASE

## UNIT 4 PHOTOS

Billings, MT 59106



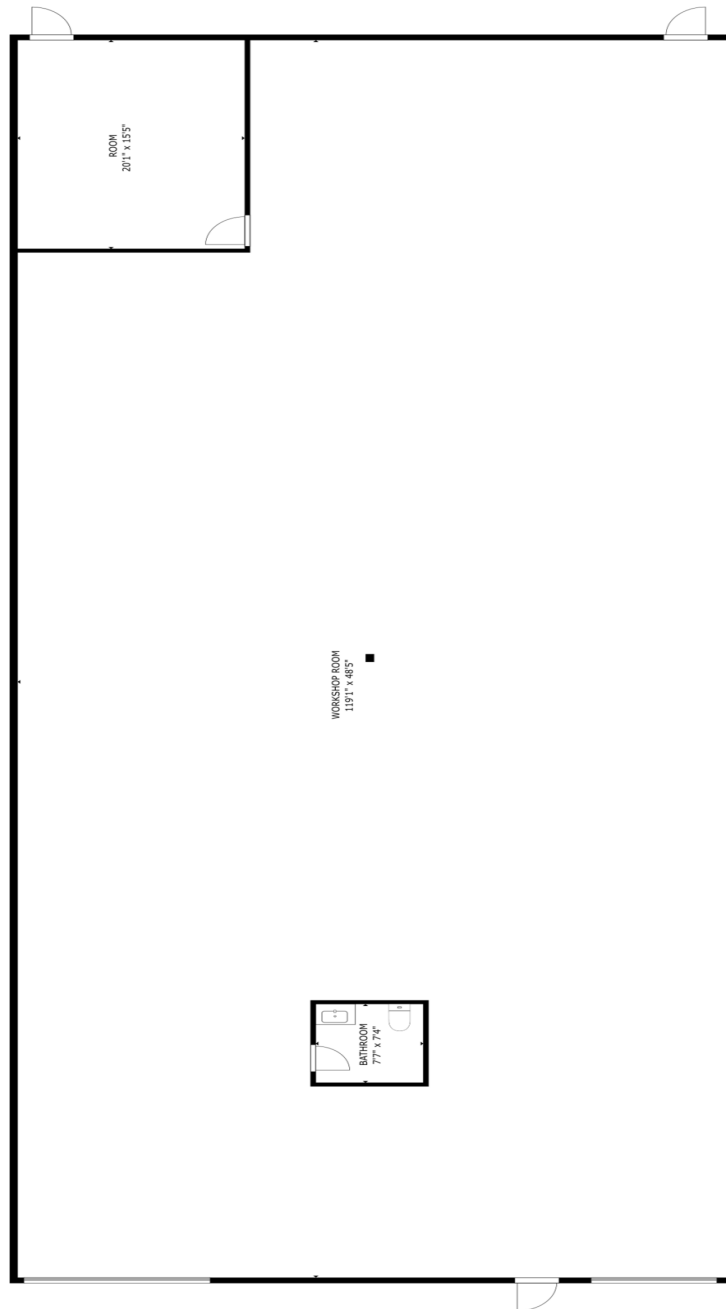
**Ben Linkenhoker**  
(406) 369-0815  
ben@cbcmontana.com



# LEASE

## UNIT 4 FLOORPLAN

Billings, MT 59101



GROSS INTERNAL AREA  
FLOOR 1: 5770 sq ft  
TOTAL: 5770 sq ft  
SIZES AND DIMENSIONS ARE APPROXIMATE, ACTUAL MAY VARY.

**Ben Linkenhoker**  
(406) 369-0815  
ben@cbcmontana.com



**COLDWELL BANKER  
COMMERCIAL**  
CBS



# LEASE

**4025 1ST AVE S**

4025 1st Ave S Billings, MT 59101



**Ben Linkenhoker**  
(406) 369-0815  
ben@cbcmontana.com



**COLDWELL BANKER  
COMMERCIAL**  
CBS

©2023 Coldwell Banker. All Rights Reserved. Coldwell Banker Commercial® and the Coldwell Banker Commercial logos are trademarks of Coldwell Banker Real Estate LLC. The Coldwell Banker® System is comprised of company owned offices which are owned by a subsidiary of Anywhere Advisors LLC and franchised offices which are independently owned and operated. The Coldwell Banker System fully supports the principles of the Equal Opportunity Act.



# LEASE

4025 1ST AVE S

Billings, MT 59101



**Ben Linkenhoker**  
(406) 369-0815  
ben@cbcmontana.com



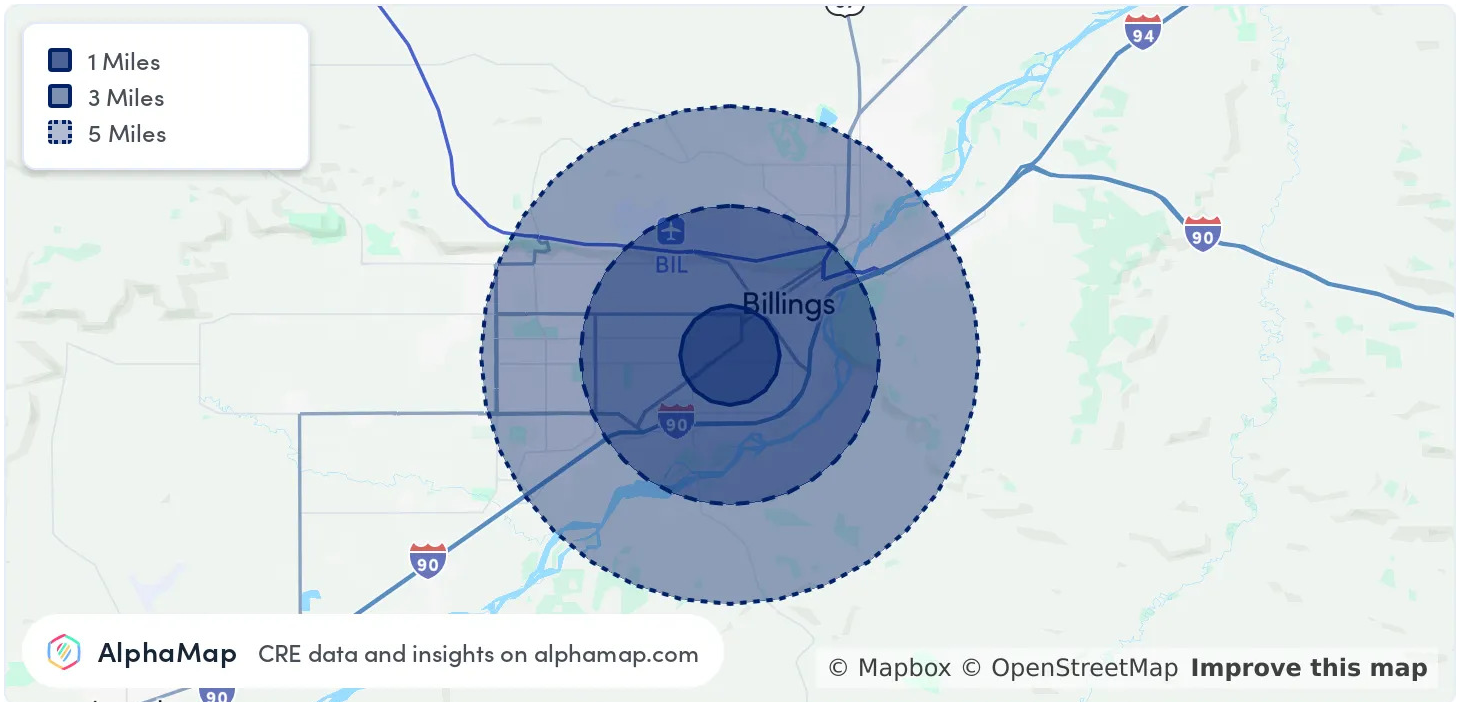
**COLDWELL BANKER  
COMMERCIAL**  
CBS



# LEASE

4025 1ST AVE S

Billings, MT 59101



## POPULATION

	1 MILE	3 MILES	5 MILES
Total Population	13,442	56,369	113,244
Average Age	39	40	41
Average Age (Male)	38	39	39
Average Age (Female)	39	41	42

## HOUSEHOLD & INCOME

	1 MILE	3 MILES	5 MILES
Total Households	6,022	24,533	48,203
Persons per HH	2.2	2.3	2.3
Average HH Income	\$63,452	\$80,354	\$88,327
Average House Value	\$300,982	\$352,731	\$376,847
Per Capita Income	\$28,841	\$34,936	\$38,403

Map and demographics data derived from AlphaMap

**Ben Linkenhoker**  
(406) 369-0815  
ben@cbcmontana.com



**COLDWELL BANKER  
COMMERCIAL**  
CBS





**BEN LINKENHOKER**

Comm Sales Associate

ben@cbcmontana.com

Direct: (406) 369-0815 | Cell: (406) 369-0815

## PROFESSIONAL BACKGROUND

Ben's entrepreneurial spirit is matched only by his commitment to people. He is known for his genuine interest in helping others, a quality that fuels his professional pursuits and is a central part of his career. In his personal life, Ben prioritizes his beautiful wife and two sweet daughters, balancing his love for the outdoors, sports, and family.

Professionally, Ben is a commercial real estate agent, mechanical engineer, versatile entrepreneur, and real estate investor with a diverse background spanning engineering, manufacturing, and business management. Growing up in Hamilton, Montana, Ben developed a passion for hands-on problem-solving and the outdoors, which has shaped both his professional journey and personal life.

While earning his Mechanical Engineering degree from MSU, Ben began his career working for a CNC machine shop, honing his skills in precision manufacturing. Following graduation, he transitioned into the downstream oil industry before moving back to the Gallatin Valley, where he designed high-tech scientific instrumentation. Ben's experience also extends to commercial fishing in Alaska and agriculture as a potato farmer and

In 2018, Ben and his wife Sarah co-founded Unbeaten Path Designs, an E-commerce and CNC machining business, where he applied his technical expertise to create high-quality products while developing a keen understanding of online retail. After a decade of personal real estate investing, Ben discovered his true passion for real estate and chose to outsource his business's manufacturing processes to focus on this new venture. As a commercial real estate agent, Ben is dedicated to helping clients navigate the complexities of the commercial real estate market, leveraging his broad skill set to advise and support those looking to invest, lease, sell, or buy properties.

He is passionate about helping others navigate their own journeys to success while fostering meaningful relationships along the way.

**CBS**

3135 Meadow View Dr.  
Billings, MT 59102  
406.656.2001

**Ben Linkenhoker**

(406) 369-0815

ben@cbcmontana.com



**COLDWELL BANKER  
COMMERCIAL**  
CBS