

SALE

3121 KING AVE W

3121 King Ave W Billings, MT 59102



SALE PRICE

\$3,800,000

Shaylee Green CCIM

406 208 7723

shaylee@cbcmontana.com

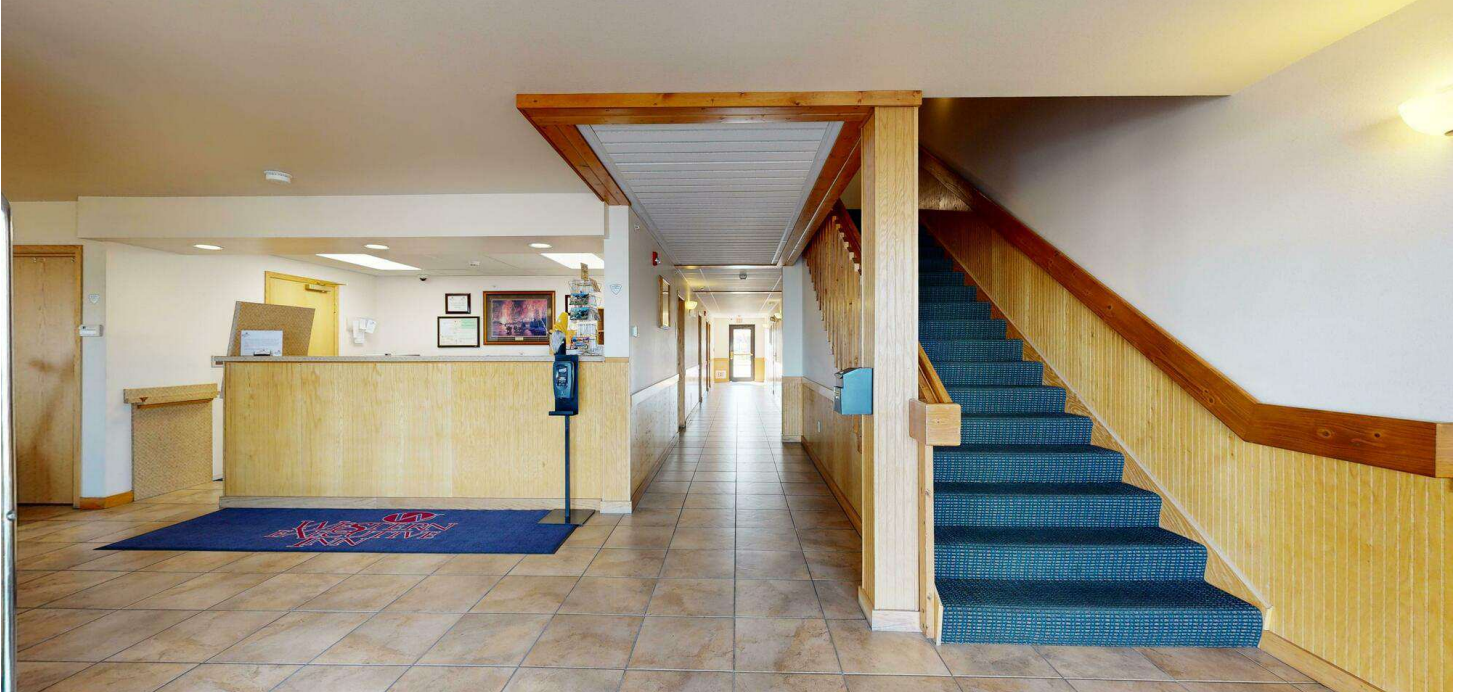
©2023 Coldwell Banker. All Rights Reserved. Coldwell Banker Commercial® and the Coldwell Banker Commercial logos are trademarks of Coldwell Banker Real Estate LLC. The Coldwell Banker® System is comprised of company owned offices which are owned by a subsidiary of Anywhere Advisors LLC and franchised offices which are independently owned and operated. The Coldwell Banker System fully supports the principles of the Equal Opportunity Act.



SALE

3121 KING AVE W

Billings, MT 59102



360° VIRTUAL TOUR

PROPERTY DESCRIPTION

40 Key Hotel For Sale

OFFERING SUMMARY

Sale Price:	\$3,800,000
Lot Size:	1 Acres
Building Size:	21,456 SF
PSF	\$177 SF
Year Built	2003
Zoning	CMU-1

PROPERTY HIGHLIGHTS

- 1 Apartment
- 2 - Handicap rooms
- 2 - Single Queen rooms
- 35 - Double Queen rooms
- Built, owned, and operated by the sellers for the entirety of operations
- \$39,010 Property Taxes
- Must sign NDA
- 2 Stories
- Website Link: <http://westernexecutiveinn.com/>
- Turnkey
- Jacuzzi tub in every room
- 27,000 cars/day traffic count
- New Roof
- Excellent condition, zero deferred maintenance
- Management & Staff in Place
- 4.2 Star reviews on google

Shaylee Green CCIM

406 208 7723

shaylee@cbcmontana.com

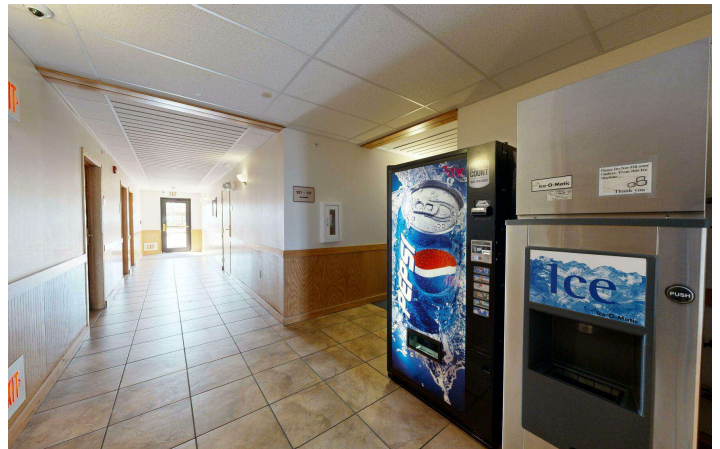
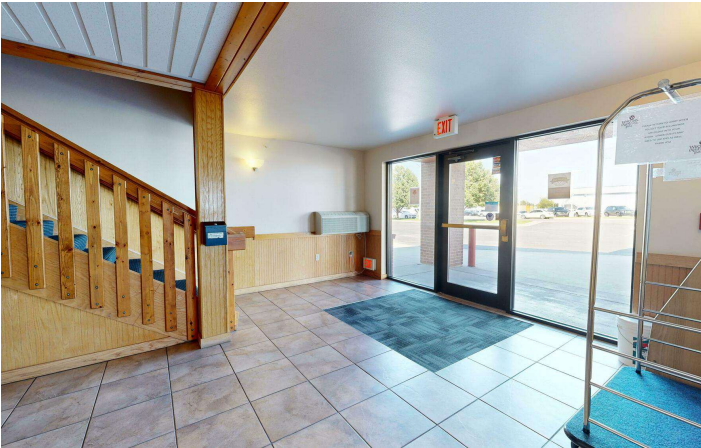
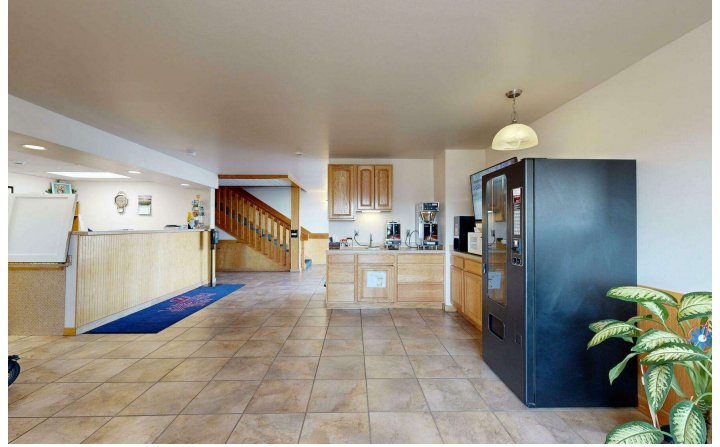
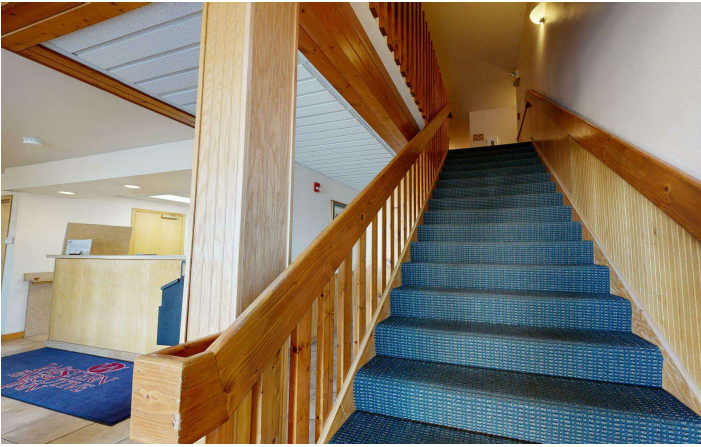


COLDWELL BANKER
COMMERCIAL
CBS

LOBBY

3121 KING AVE W

Billings, MT 59102



Shaylee Green CCIM
406 208 7723
shaylee@cbcmontana.com

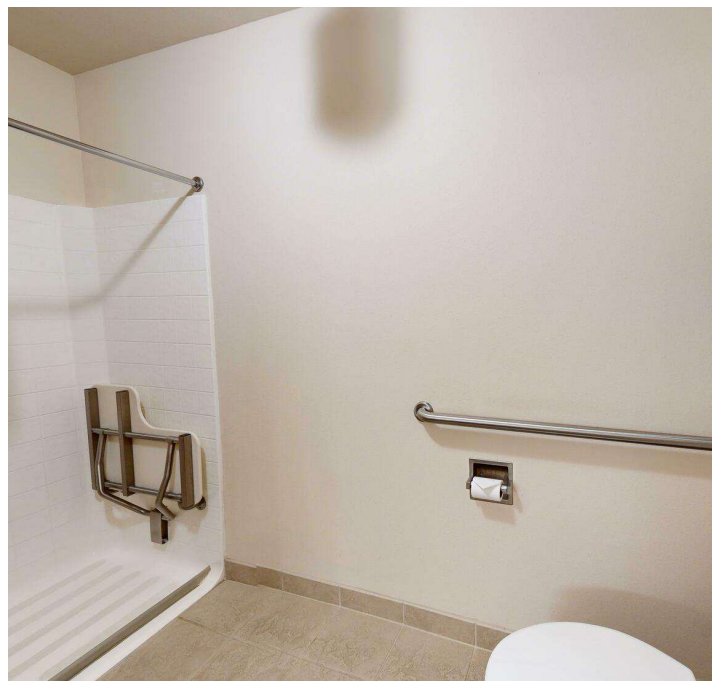


**COLDWELL BANKER
COMMERCIAL**
CBS

HANDICAP ROOM

3121 KING AVE W

Billings, MT 59102



Shaylee Green CCIM
406 208 7723
shaylee@cbcmontana.com



**COLDWELL BANKER
COMMERCIAL**
CBS

STANDARD ROOM

3121 KING AVE W

Billings, MT 59102



Shaylee Green CCIM
406 208 7723
shaylee@cbcmontana.com

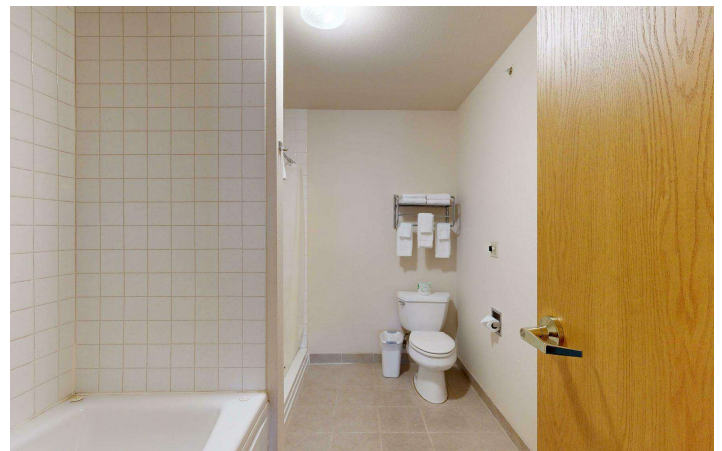
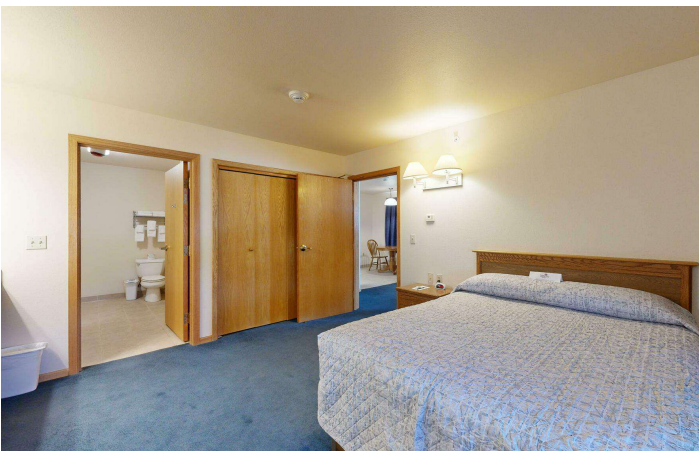


**COLDWELL BANKER
COMMERCIAL**
CBS

APARTMENT

3121 KING AVE W

Billings, MT 59102



Shaylee Green CCIM
406 208 7723
shaylee@cbcmontana.com

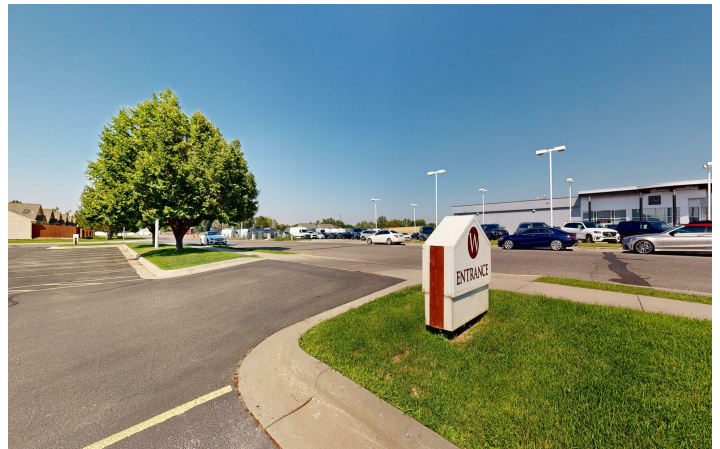
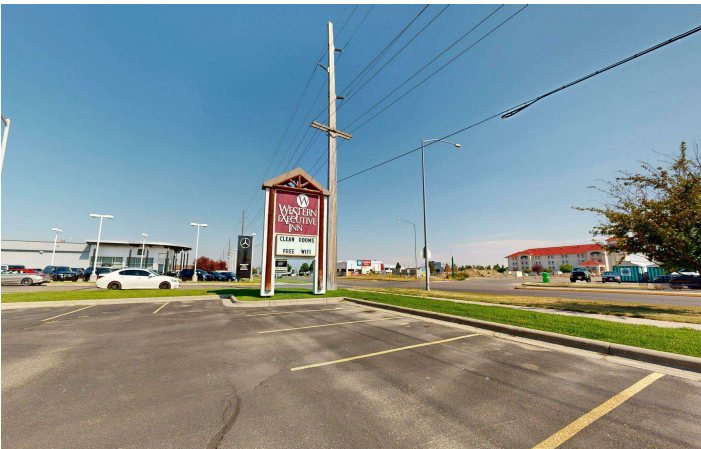
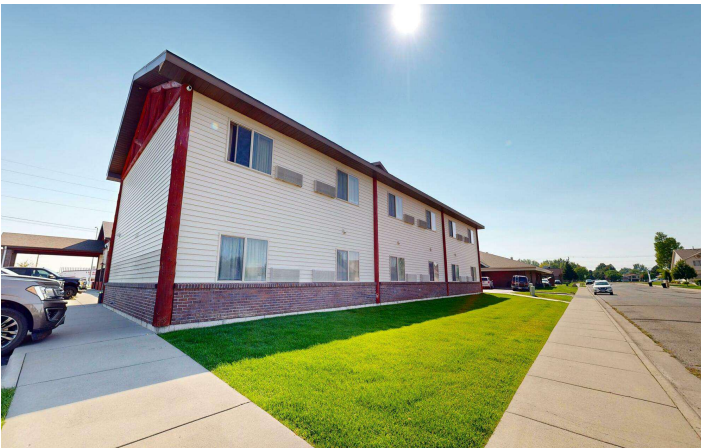


**COLDWELL BANKER
COMMERCIAL**
CBS

SALE

3121 KING AVE W

Billings, MT 59102



Shaylee Green CCIM
406 208 7723
shaylee@cbcmontana.com

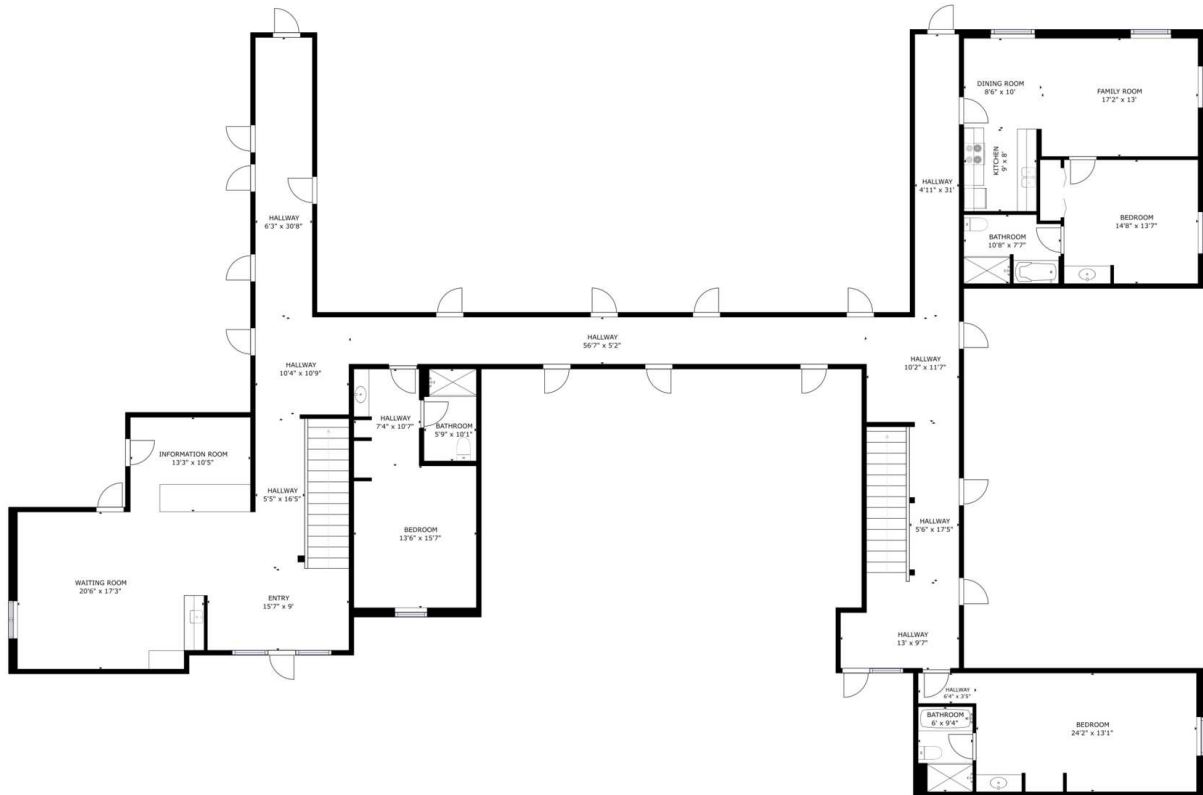


**COLDWELL BANKER
COMMERCIAL**
CBS

1ST FLOOR

3121 KING AVE W

Billings, MT 59102



FLOOR 1

GROSS INTERNAL AREA
FLOOR 1: 3513 sq ft, FLOOR 2: 1020 sq ft
TOTAL: 4533 sq ft
SIZES AND DIMENSIONS ARE APPROXIMATE, ACTUAL MAY VARY.



Shaylee Green CCIM
406 208 7723
shaylee@cbcmontana.com

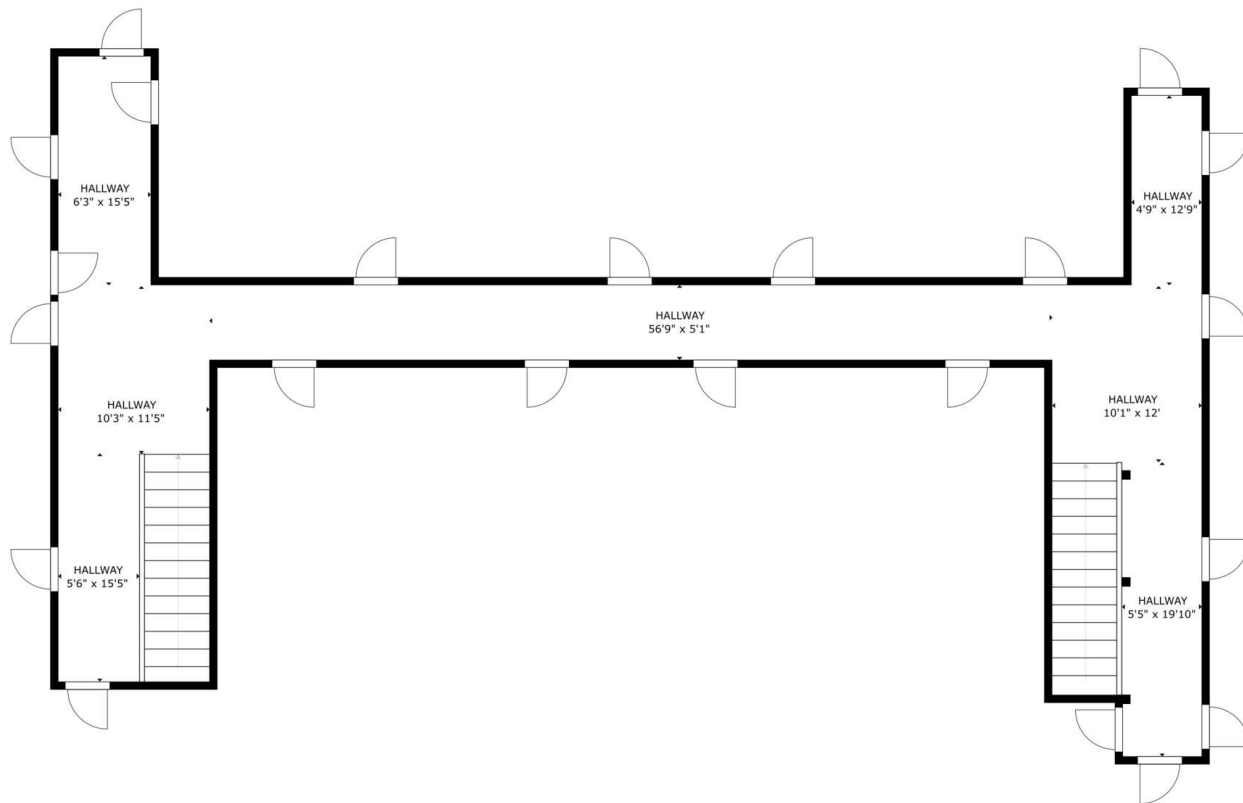


COLDWELL BANKER
COMMERCIAL
CBS

2ND FLOOR

3121 KING AVE W

Billings, MT 59102



FLOOR 2

GROSS INTERNAL AREA
FLOOR 1: 3513 sq ft, FLOOR 2: 1020 sq ft
TOTAL: 4533 sq ft
SIZES AND DIMENSIONS ARE APPROXIMATE, ACTUAL MAY VARY.



Shaylee Green CCIM
406 208 7723
shaylee@cbcmontana.com



**COLDWELL BANKER
COMMERCIAL**
CBS

SALE

3121 KING AVE W

Billings, MT 59102



Shaylee Green CCIM
406 208 7723
shaylee@cbcmontana.com



COLDWELL BANKER
COMMERCIAL
CBS



SHAYLEE GREEN CCIM

Broker

shaylee@cbcmontana.com

Direct: 406.208.7723 | Cell: 406.208.7723

PROFESSIONAL BACKGROUND

Shaylee grew up in Billings, MT and has spent most of her life taking advantage of the amazing outdoor activities Montana has to offer, such as kayaking, rafting, snowboarding, riding dirt bikes, and camping in her RV with her 5 beautiful and very spunky children.

Because Shaylee loves people and economics she excels in Real Estate and has successfully completed over 150 transactions and has extensive knowledge of investment grade properties. Shaylee carries an average of 16-20 listings for sale and lease on a monthly basis.

Shaylee joined Coldwell Banker Commercial after realizing that her true passion is commercial real estate. Because Shaylee does what she loves, she feels like she will never have to "work" another day in her life. She is proud to be the only female on the Coldwell Banker Commercial team in an advanced career field and wishes to pioneer the way for other women who want to make a huge, positive impact in their community.

Volunteer work: Single Mothers, Nursing homes, Veterans, Third World countries, Disaster relief.

- "I work hard so I can be generous, as others have been generous to me." Shaylee Green

EDUCATION

She is a Nationally licensed Realtor, Broker, and a Certified Commercial Investment Manager (CCIM) designee. This designation is the equivalent of a masters degree in commercial real estate. CCIM's are experts at minimizing your risk, maximizing your ROI, and optimizing the value of your real estate. Shaylee Studied Theology at Yellowstone Christian College and Completed an A.A. in Christian studies with a minor in Humanities. She then moved on to Study Elementary Education at MSU in Billings.

MEMBERSHIPS

Notable transactions and clients:

*Accumulated \$18,000,000 +/- in total sales.

*Accumulated 1,507,200 sf leased retail, office, and industrial.

*Billings Athletic Club - \$1,000,000 sale - 20,000 SF

*\$3.5 Million - 80+ Bed Assisted Living Portfolio

*Whalen Tire - \$1,165,000 Sale - 1 AC - 20,000 SF

1640 Lockwood - \$1,000,000 - 10,080 SF - 2 AC

*23 Unit Multifamily portfolio

*Mobile home parks - 7+ Sales

*Land sales - 3-5 parcels yearly average including recreational or commercial subdivisions

*Estate sales with 6+ family members - 4 transactions.

*Major Clients - Phillips 66, Brand Safeway, Lavish Salon Studios, Magic City Casino, 777 Fitness, Sissies Cleaning, Thrivent Financial, Polar Services, Mountain Mudd

*Businesses sold - Montana Beauty Institute, Rae Rae's Bakery, Reliable Water Services, Ember and Indigo, Brookstone Monument, J-Wash Carwash.

CBS

3135 Meadow View Dr.
Billings, MT 59102
406.656.2001

Shaylee Green CCIM

406 208 7723

shaylee@cbcmontana.com



COLDWELL BANKER
COMMERCIAL

CBS