

# LEASE

14 1/2 S 27TH ST, BILLINGS, MT



**LEASE RATE**            \$700.00 per month  
**SIZE**                      530 sf

**Nathan Matelich, CCIM**  
406 781 6889  
nathan@cbcmontana.com

©2023 Coldwell Banker. All Rights Reserved. Coldwell Banker Commercial® and the Coldwell Banker Commercial logos are trademarks of Coldwell Banker Real Estate LLC. The Coldwell Banker® System is comprised of company owned offices which are owned by a subsidiary of Anywhere Advisors LLC and franchised offices which are independently owned and operated. The Coldwell Banker System fully supports the principles of the Equal Opportunity Act.



# LEASE

14 1/2 S 27TH ST

14 1/2 S 27th St Billings, MT 59101



Lease Rate

**\$700.00 PER MONTH**

## OFFERING SUMMARY

Building Size:	13,972 SF
Available SF:	530 SF
Year Built:	1930
Zoning:	Central Business District

## PROPERTY OVERVIEW

- \*530 of Retail Space for Lease
- \*\$700/mo + electric
- \*Located on a busy 27th Street in downtown Billings
- \*16,000+ cars per day
- \*Excellent retail exposure with good signage opportunities
- \*Modern tile & luxury vinyl plank flooring
- \*Updated restrooms
- \*Street parking or free city parking lot just north of the skate park for customers & employees

## LOCATION OVERVIEW

14 S 27th St retail space is located on a busy 27th St W. Located near downtown Billings, tenants enjoy walking distance from The Fieldhouse, Wild Ginger, RiverStone Health, Double Tree Hotel and Carters Brewing to name a few. This retail space would be an ideal location for a barber shop, salon, retailer or any small business looking for an affordable space closing to downtown with good exposure.

**Nathan Matelich, CCIM**  
406 781 6889  
nathan@cbcmontana.com



**COLDWELL BANKER  
COMMERCIAL**  
CBS



# LEASE

14 1/2 S 27TH ST  
14 1/2 S 27th St Billings, MT 59101



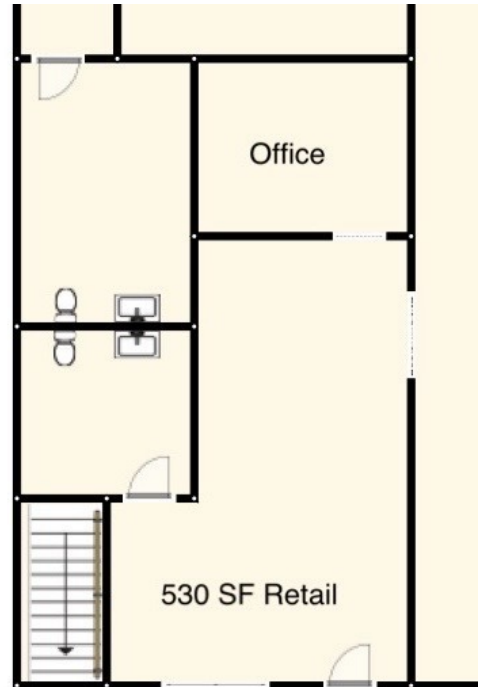
**Nathan Matelich, CCIM**  
406 781 6889  
nathan@cbcmontana.com



**COLDWELL BANKER  
COMMERCIAL**  
CBS

# LEASE

14 1/2 S 27TH ST  
14 1/2 S 27th St Billings, MT 59101



**Nathan Matelich, CCIM**  
406 781 6889  
nathan@cbcmontana.com



**COLDWELL BANKER  
COMMERCIAL**  
CBS



# LEASE

14 1/2 S 27TH ST  
14 1/2 S 27th St Billings, MT 59101



**Nathan Matelich, CCIM**  
406 781 6889  
nathan@cbcmontana.com

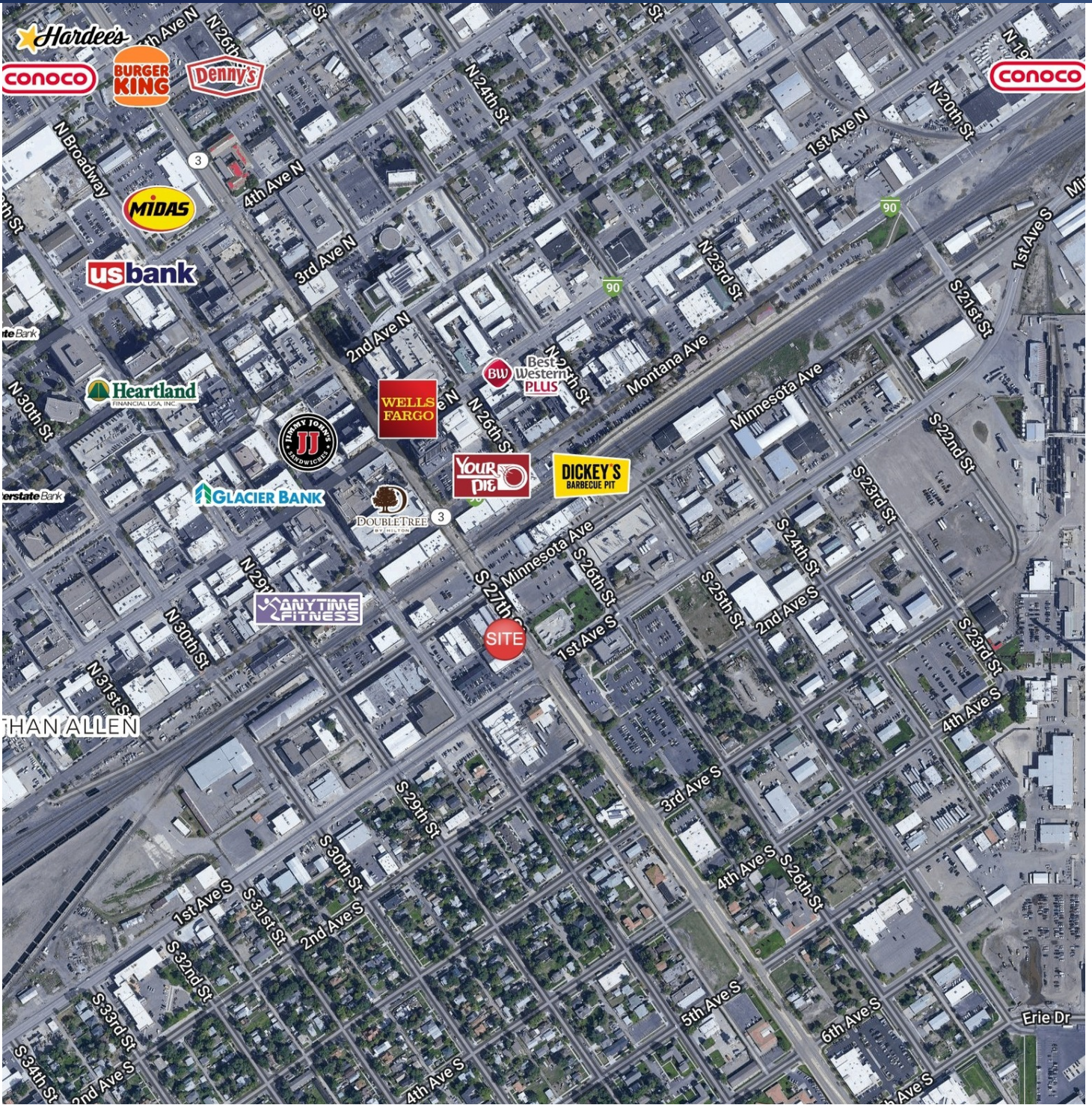


**COLDWELL BANKER  
COMMERCIAL**  
CBS



# LEASE

14 1/2 S 27TH ST  
14 1/2 S 27th St Billings, MT 59101



**Nathan Matelich, CCIM**  
406 781 6889  
nathan@cbcmontana.com



**COLDWELL BANKER  
COMMERCIAL**  
CBS