

FOR SALE

SHOPWORLD 406 SUBDIVISION - LOT 187

418 W Recreation Dr. Billings, MT 59102



PROPERTY DESCRIPTION

New Construction For Sale

OFFERING SUMMARY

Sale Price:	\$349,440
Price per SF :	\$130
Zone:	Outside City Limits
Lot Size:	8,000 SF +/-
Building Size:	2,688 SF

PROPERTY HIGHLIGHTS

- 2200 gallon Cistern and septic sewer
- Construction delivery April 1, 2024
- Gas furnaces - (2)
- Plumbed for two bathrooms, 1 finished
- (2) OH 14ft Doors
- Metal Roof - 29 gage steel
- Wall insulation R 19 / Ceiling Insulation R 48
- Pole Barn
- Power - (2) 220, (14) 110 outlets
- 2 Fans, 16 lights
- Can be demised into two approximately 1,344 SF units
- 2 Gas meters and 2 Electrical meters

Shaylee Green CCIM

406 208 7723

shaylee@cbcmontana.com

Todd Sherman

406 570 8961

todd@cbcmontana.com



**COLDWELL BANKER
COMMERCIAL**

CBS

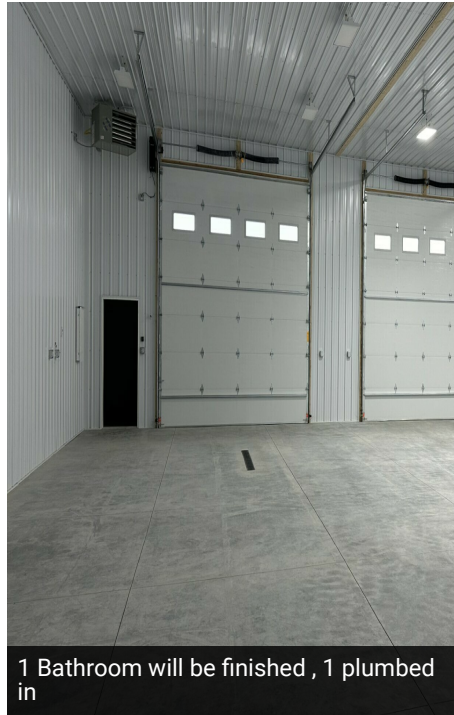
PHOTOS

SHOPWORLD 406 LOT 187

418 W Recreation Dr. Billings, MT 59102



Subdivision Image



1 Bathroom will be finished , 1 plumbed in



Add text here...

Shaylee Green CCIM

406 208 7723

shaylee@cbcmontana.com

Todd Sherman

406 570 8961

todd@cbcmontana.com



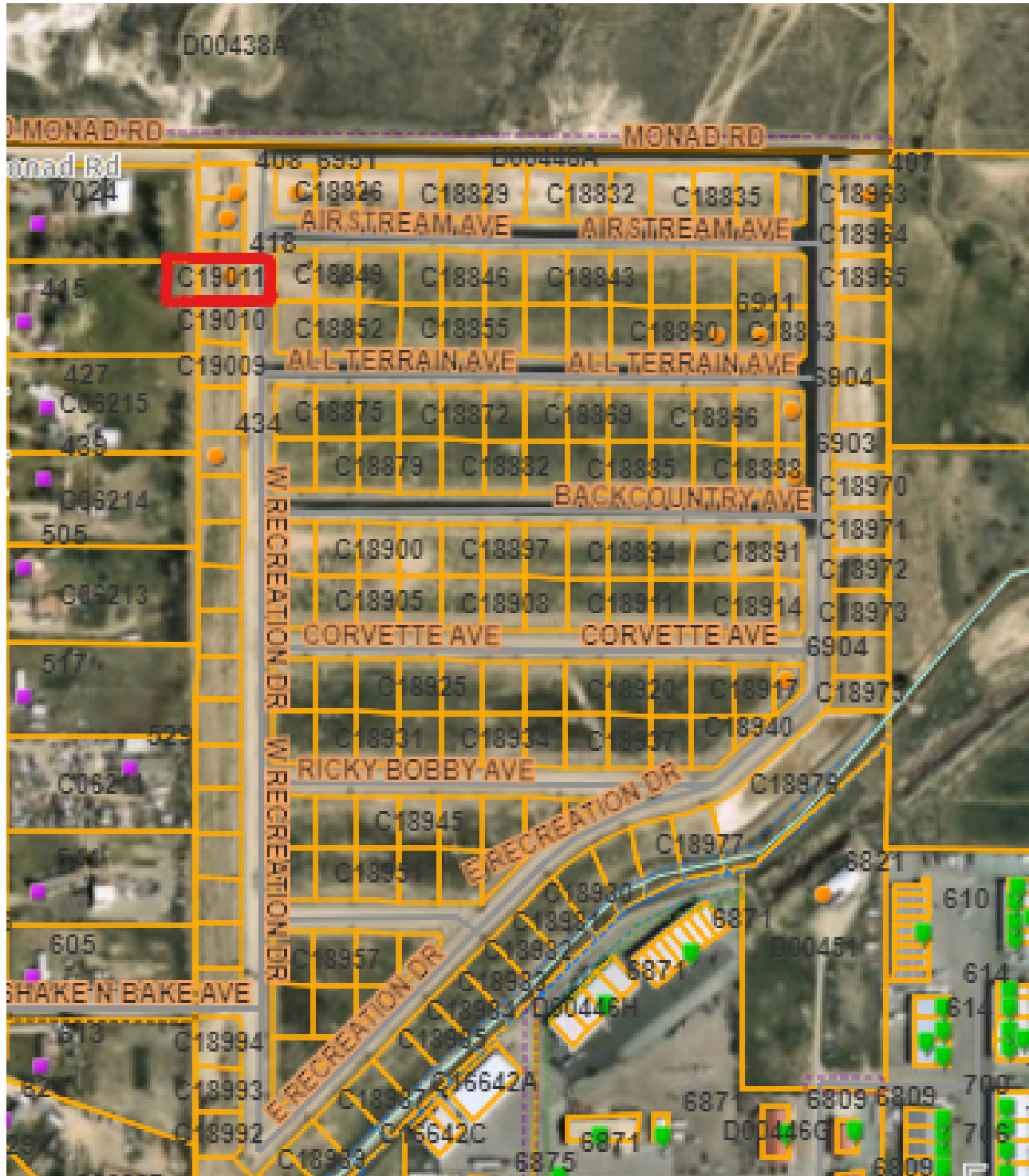
**COLDWELL BANKER
COMMERCIAL**

CBS

PLAT MAP

SHOPWORLD 406 LOT 187

418 W Recreation Dr. Billings, MT 59102



Shaylee Green CCIM
406 208 7723
shaylee@cbcmontana.com

Todd Sherman
406 570 8961
todd@cbcmontana.com



**COLDWELL BANKER
COMMERCIAL**
CBS

LOCATION MAP

SHOPWORLD 406 LOT 187

418 W Recreation Dr. Billings, MT 59102



Shaylee Green CCIM
406 208 7723
shaylee@cbcmontana.com

Todd Sherman
406 570 8961
todd@cbcmontana.com



**COLDWELL BANKER
COMMERCIAL**
CBS

SALE

SHOPWORLD 406 LOT 187

418 W Recreation Dr. Billings, MT 59102



TODD SHERMAN

Commercial Realtor

todd@cbcmontana.com

Direct: **406.570.8961** | Cell: **406.570.8961**

MT #54530

PROFESSIONAL BACKGROUND

Todd Sherman is a Licensed Commercial Realtor in Billings, Montana for Coldwell Banker Commercial CBS. He has spent the last several years specializing in Sales, Leasing, and Commercial development. Todd works throughout the state finding suitable locations for National tenants, as well as working with Owners and Landlords listing all kinds of Commercial properties including; business sales, land, Industrial facilities, Hospitality, and Medical facilities. Since joining the Coldwell Banker Commercial team in 2018, Todd has been Rookie of the Year as well as Top Producer in 2020, with over \$8 Million in revenue. In 1988, Todd graduated from University Of Oregon with a Bachelor of Science in Business Communications. He spent the next 28 years managing title insurance companies in Oregon, Washington, and Montana. With his extensive industry related background, Todd has an extensive network of Real Estate Professionals and Affiliates throughout the region. Through this network, Todd is able to effectively connect Buyers and Tenants to Sellers and Landlords.

EDUCATION

University of Oregon
BS in Business Communications

MEMBERSHIPS

Todd has been an active member of various trade and civic organizations, including The Big Sky Economic Development Corporation, Chamber of Commerce, Homebuilders Association, Association of Realtors, Downtown Rotary Club, and East Billings Industrial Revitalization Board. He is also the Vice President on the Board of Directors for the nonprofit organization Sustainable Montana. Todd is passionate about what he does, and his enthusiasm for commercial real estate becomes evident very quickly.

CBS

3135 Meadow View Dr.
Billings, MT 59102
406.656.2001

Shaylee Green CCIM

406 208 7723

shaylee@cbcmontana.com

Todd Sherman

406 570 8961

todd@cbcmontana.com



**COLDWELL BANKER
COMMERCIAL**

CBS

SALE

SHOPWORLD 406 LOT 187

418 W Recreation Dr. Billings, MT 59102



SHAYLEE GREEN CCIM

Broker

shaylee@cbcmontana.com

Direct: **406.208.7723** | Cell: **406.208.7723**

PROFESSIONAL BACKGROUND

Shaylee grew up in Billings, MT and has spent most of her life taking advantage of the amazing outdoor activities Montana has to offer, such as kayaking, rafting, snowboarding, riding dirt bikes, and camping in her RV with her 5 beautiful and very spunky children.

Because Shaylee loves people and economics she excels in Real Estate and has successfully completed over 150 transactions and has extensive knowledge of investment grade properties. Shaylee carries an average of 16-20 listings for sale and lease on a monthly basis.

Shaylee joined Coldwell Banker Commercial after realizing that her true passion is commercial real estate. Because Shaylee does what she loves, she feels like she will never have to "work" another day in her life. She is proud to be the only female on the Coldwell Banker Commercial team in an advanced career field and wishes to pioneer the way for other women who want to make a huge, positive impact in their community.

Volunteer work: Single Mothers, Nursing homes, Veterans, Third World countries, Disaster relief.

- "I work hard so I can be generous, as others have been generous to me." Shaylee Green

EDUCATION

She is a Nationally licensed Realtor, Broker, and a Certified Commercial Investment Manager (CCIM) designee. This designation is the equivalent of a masters degree in commercial real estate. CCIM's are experts at minimizing your risk, maximizing your ROI, and optimizing the value of your real estate.

Shaylee Studied Theology at Yellowstone Christian College and Completed an A.A. in Christian studies with a minor in Humanities. She then moved on to Study Elementary Education at MSU in Billings.

MEMBERSHIPS

Notable transactions and clients:

*Accumulated \$18,000,000 +/- in total sales.

*Accumulated 1,507,200 sf leased retail, office, and industrial.

*Billings Athletic Club - \$1,000,000 sale - 20,000 SF

*\$3.5 Million - 80+ Bed Assisted Living Portfolio

*Whalen Tire - \$1,165,000 Sale - 1 AC - 20,000 SF

1640 Lockwood - \$1,000,000 -10,080 SF - 2 AC

*23 Unit Multifamily portfolio

*Mobile home parks - 7+ Sales

*Land sales - 3-5 parcels yearly average including recreational or commercial subdivisions

*Estate sales with 6+ family members - 4 transactions.

*Major Clients - Phillips 66, Brand Safeway, Lavish Salon Studios, Magic City Casino, 777 Fitness, Sissies Cleaning, Thrivent Financial, Polar Services, Mountain Mudd

*Businesses sold - Montana Beauty Institute, Rae Rae's Bakery, Reliable Water Services, Ember and Indigo, Brookstone Monument, J-Wash Carwash.

CBS

3135 Meadow View Dr.
Billings, MT 59102
406.656.2001

Shaylee Green CCIM

406 208 7723

shaylee@cbcmontana.com

Todd Sherman

406 570 8961

todd@cbcmontana.com



**COLDWELL BANKER
COMMERCIAL**

CBS