

LEASE

9000 QUEST AVE

Billings, MT 59101



PROPERTY DESCRIPTION

9000 Quest Ave is comprised of 3 separate shop spaces with the middle unit for lease. This space has a small office, its own private restroom, and a 9-foot overhead door. This shop space is conveniently located just off South Frontage Rd close to ProTech Steel and TLC Patriot. This shop space is ideal for any small business looking for a great location to serve the Billings West End or Laurel.

PROPERTY HIGHLIGHTS

- 2,800 sf shop space
- \$1,500/month plus Gas & Electric
- 9 ft Overhead Door
- Small Office
- Private Restroom

OFFERING SUMMARY

Lease Rate:	\$1,500.00 per month (MG)
-------------	---------------------------

Available SF:	2,800 SF
---------------	----------

Lot Size:	10,400 SF
-----------	-----------

Mike Bruschwein

406 697 6176

mike@cbcmontana.com

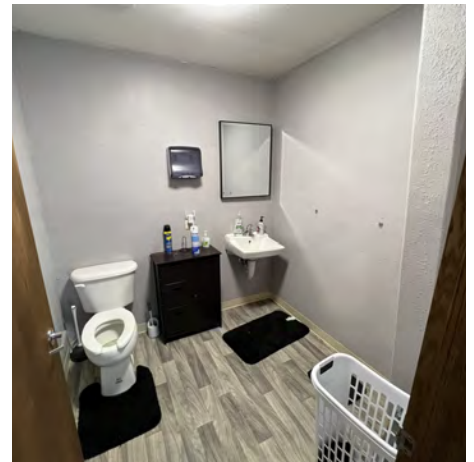


**COLDWELL BANKER
COMMERCIAL**
CBS

LEASE

9000 QUEST AVE

Billings, MT 59101



Mike Bruschwein
406 697 6176
mike@cbcmontana.com



**COLDWELL BANKER
COMMERCIAL**
CBS

LEASE

9000 QUEST AVE

Billings, MT 59101



Mike Bruschwein

406 697 6176

mike@cbcmontana.com



**COLDWELL BANKER
COMMERCIAL**
CBS



MIKE BRUSCHWEIN

Comm Sales Associate

mike@cbcmontana.com

Direct: 406.697.6176 | Cell: 406.697.6176

PROFESSIONAL BACKGROUND

Mike was born and raised in Billings, Montana and grew up in a large family with 3 brothers and 3 sisters. He attended Billings Central Catholic HS and later received a degree in Biology from the University of Portland. After college he moved to Bozeman and ran analytics in a research lab at Montana State University. He married his wife Madison in 2018 and they decided to move home to Billings. Mike accepted a job at Computers Unlimited where he excelled at customer service and enjoyed assisting and interacting with the company's industrial and medical customers. Mike has always been passionate about the growth of the Billings community and was a long-time member of the Big Brothers Big Sisters of America. In 2018 he received the "Big of the Year" award for his impact as a mentor. He attends church regularly with his family and participates frequently with the young adults group there. Mike loves reading, hiking, skiing, and golfing. His two young sons keep him busy when he's not working, and he loves spending time outdoors with his family in all the beautiful seasons that Montana has to offer.

In 2020, Mike ventured into real estate investment, growing his portfolio from one to twelve doors in the first year. Mike specializes in helping clients buy and sell multifamily & investment grade properties. He has a passion for diving into the intricate details and numbers of each transaction to guarantee his clients achieve exceptional returns. In addition to his expertise in investment properties, Mike has honed his specialization in office and industrial properties. He works with a diverse range of clients, from local businesses to regional and national companies relocating to Billings. Some notable clients that have trusted Mike with their real estate needs include Borealis Fuels & Logistics, Ziply Fiber, Montana Federal Defenders, and Billings Family Eyecare.

CBS

1215 24th Street Suite 240
Billings, MT 59102
406.656.2001

Mike Bruschwein

406 697 6176

mike@cbcmontana.com



**COLDWELL BANKER
COMMERCIAL**
CBS