

FOR LEASE

134 GRAND AVENUE

Billings, MT 59101



LEASE RATE \$3,500.00 per month + utilities

Shaylee Green CCIM
406 208 7723
shaylee@cbcmontana.com



**COLDWELL BANKER
COMMERCIAL**
CBS

©2023 Coldwell Banker. All Rights Reserved. Coldwell Banker Commercial® and the Coldwell Banker Commercial logos are trademarks of Coldwell Banker Real Estate LLC. The Coldwell Banker® System is comprised of company owned offices which are owned by a subsidiary of Anywhere Advisors LLC and franchised offices which are independently owned and operated. The Coldwell Banker System fully supports the principles of the Equal Opportunity Act.

LEASE

134 GRAND AVENUE

Billings, MT 59101



PROPERTY HIGHLIGHTS

- 960 SF Office/Retail area on Grand Ave
- 1064 SF Retail (Currently photography studio)
- 1064 SF Apartment - 2 bed/1 full bath with full kitchen with lots of remodel and upgrades
- 900 SF Basement with washer dryer hookups and vented room to exterior
- Zoned Neighborhood Office
- Taxes \$1882 yr 2022
- 1930 Built
- Total exterior and interior major systems remodel 2019-2023 (Siding, roof, electrical, plumbing, flooring, carpet, paint, appliances)
- 2 public bathrooms
- Off street parking spaces
- Shed and New flower beds
- Signage on Grand Ave
- 25,000+/- cars a day traffic
- Centrally located

PROPERTY DESCRIPTION

Retail/Office building with Apartment For Lease

Building also For Sale for \$535,000

OFFERING SUMMARY

Lease Rate:	\$3,500.00 per month (gross) + utilities
Lot Size:	7,000 SF
Building Size:	4,048 SF
Zoning:	NO - Neighborhood Office

OTHER RESOURCES

[Virtual Tour](#)

Shaylee Green CCIM
406 208 7723
shaylee@cbcmontana.com



**COLDWELL BANKER
COMMERCIAL**
CBS

2 BED/1 BATH APARTMENT

134 GRAND AVENUE

Billings, MT 59101



Shaylee Green CCIM
406 208 7723
shaylee@cbcmontana.com

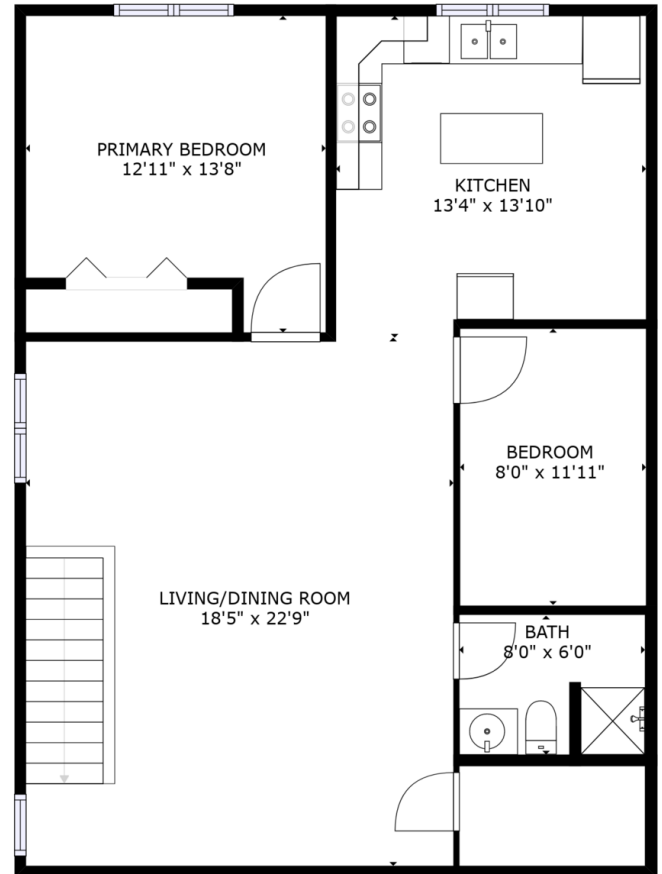
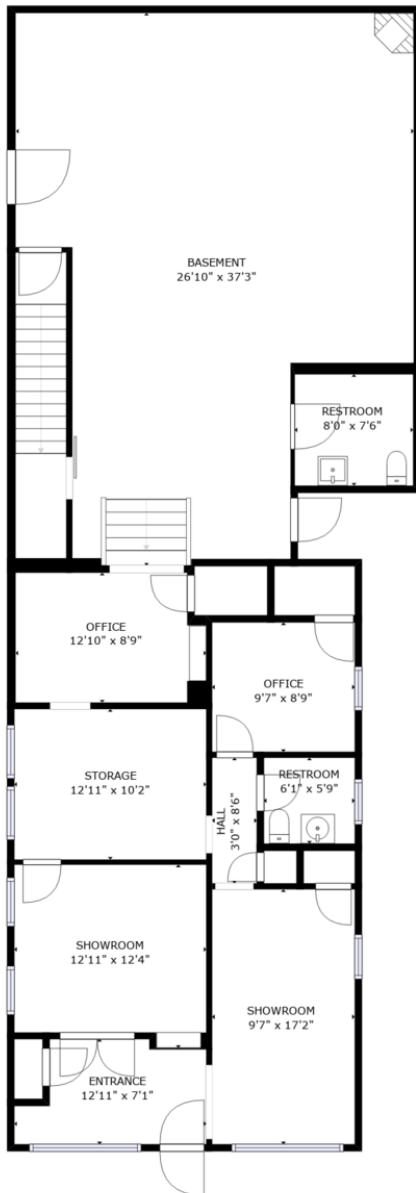


**COLDWELL BANKER
COMMERCIAL**
CBS

FLOOR PLANS

134 GRAND AVENUE

Billings, MT 59101



GROSS INTERNAL AREA
FLOOR 1: 1851 sq. ft, FLOOR 2: 980 sq. ft
TOTAL: 2831 sq. ft
SIZES AND DIMENSIONS ARE APPROXIMATE, ACTUAL MAY VARY.

GROSS INTERNAL AREA
FLOOR 1: 1851 sq. ft, FLOOR 2: 980 sq. ft
TOTAL: 2831 sq. ft
SIZES AND DIMENSIONS ARE APPROXIMATE, ACTUAL MAY VARY.

Shaylee Green CCIM
406 208 7723
shaylee@cbcmontana.com

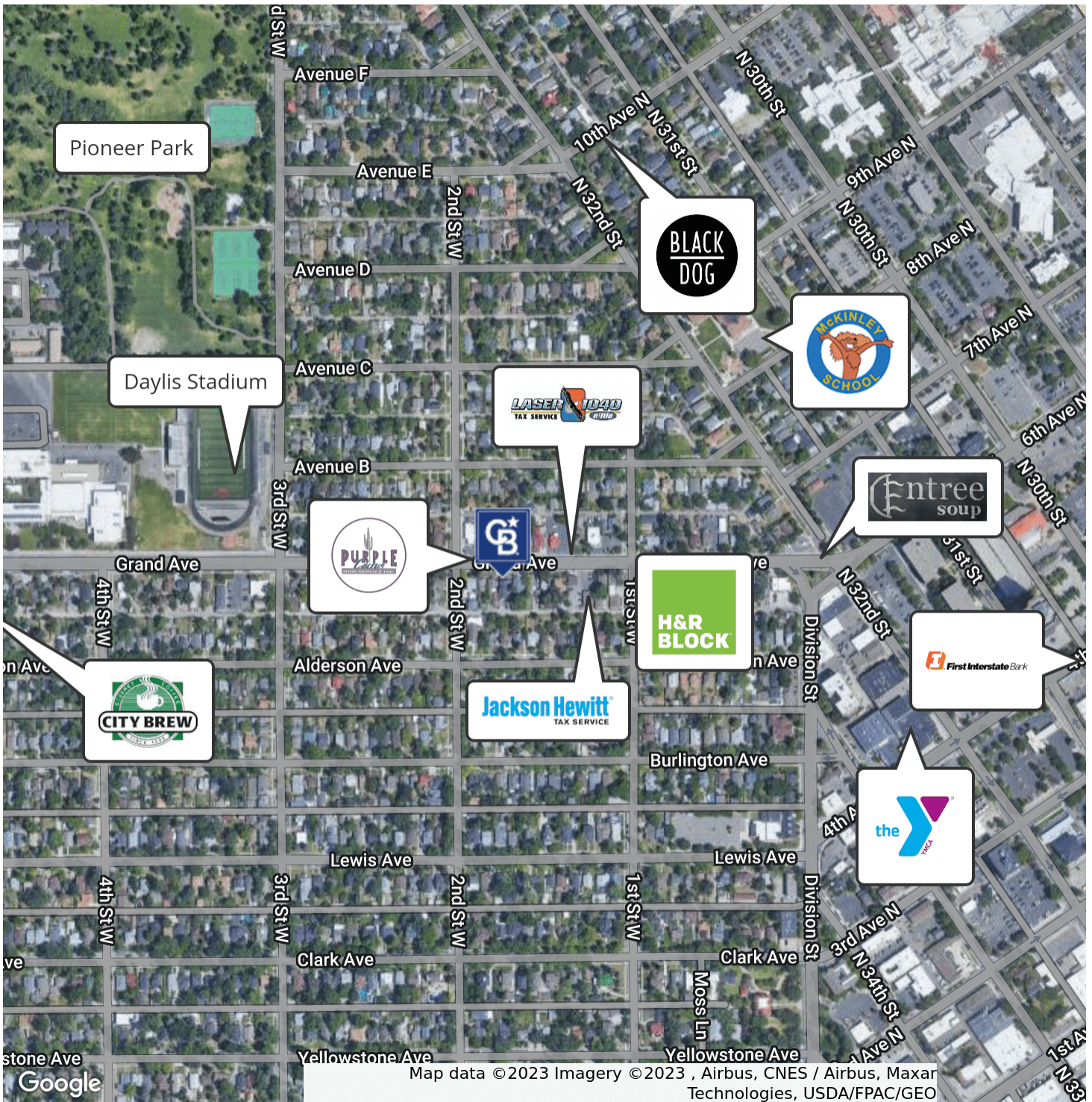


**COLDWELL BANKER
COMMERCIAL**
CBS

MAP

134 GRAND AVENUE

Billings, MT 59101



Shaylee Green CCIM
406 208 7723
shaylee@cbcmontana.com



**COLDWELL BANKER
COMMERCIAL**
CBS

LEASE

134 GRAND AVENUE

Billings, MT 59101



SHAYLEE GREEN CCIM

Broker

shaylee@cbcmontana.com

Direct: 406.656.2001 | Cell: 406.208.7723

PROFESSIONAL BACKGROUND

Shaylee grew up in Billings, MT and has spent most of her life taking advantage of the amazing outdoor activities Montana has to offer, such as kayaking, rafting, snowboarding, riding dirt bikes, and camping in her RV with her 5 beautiful and very spunky children.

Because Shaylee loves people and economics she excels in Real Estate and has successfully completed over 150 transactions and has extensive knowledge of investment grade properties. Shaylee carries an average of 16-20 listings for sale and lease on a monthly basis.

Shaylee joined Coldwell Banker Commercial after realizing that her true passion is commercial real estate. Because Shaylee does what she loves, she feels like she will never have to "work" another day in her life. She is proud to be the only female on the Coldwell Banker Commercial team in an advanced career field and wishes to pioneer the way for other women who want to make a huge, positive impact in their community.

Volunteer work: Single Mothers, Nursing homes, Veterans, Third World countries, Disaster relief.

- "I work hard so I can be generous, as others have been generous to me."
Shaylee Green

EDUCATION

She is a Nationally licensed Realtor, Broker, and a Certified Commercial Investment Manager (CCIM) designee. This designation is the equivalent of a masters degree in commercial real estate. CCIM's are experts at minimizing your risk, maximizing your ROI, and optimizing the value of your real estate.

Shaylee Studied Theology at Yellowstone Christian College and Completed an A.A. in Christian studies with a minor in Humanities. She then moved on to Study Elementary Education at MSU in Billings.

MEMBERSHIPS

Notable transactions and clients:

*Accumulated \$18,000,000 +/- in total sales.

*Accumulated 1,507,200 sf leased retail, office, and industrial.

*Billings Athletic Club - \$1,000,000 sale - 20,000 SF

*\$3.5 Million - 80+ Bed Assisted Living Portfolio

*Whalen Tire - \$1,165,000 Sale - 1 AC - 20,000 SF

1640 Lockwood - \$1,000,000 -10,080 SF - 2 AC

*23 Unit Multifamily portfolio

*Mobile home parks - 7+ Sales

*Land sales - 3-5 parcels yearly average including recreational or commercial subdivisions

*Estate sales with 6+ family members - 4 transactions.

*Major Clients - Phillips 66, Brand Safeway, Lavish Salon Studios, Magic City Casino, 777 Fitness, Sissies Cleaning, Thrivent Financial, Polar Services, Mountain Mudd

*Businesses sold - Montana Beauty Institute, Rae Rae's Bakery, Reliable Water Services, Ember and Indigo, Brookstone Monument, J-Wash Carwash.

CBS

1215 24th Street Suite 240
Billings, MT 59102
406.656.2001

Shaylee Green CCIM

406 208 7723

shaylee@cbcmontana.com



COLDWELL BANKER
COMMERCIAL
CBS