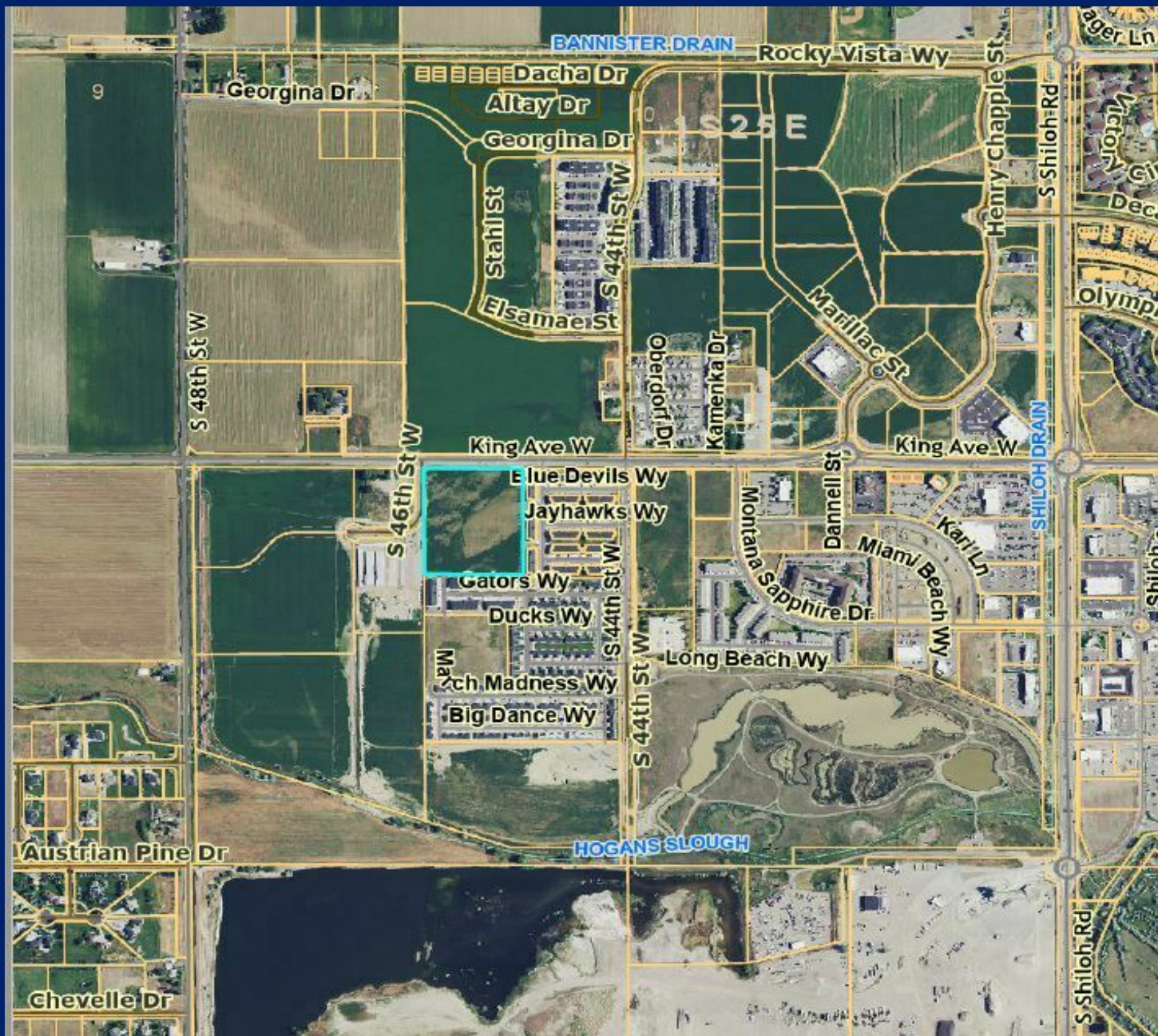


SALE

46TH & KING

4600 King Ave W Billings, MT 59106



SALE PRICE

\$2,047,537

Blaine Poppler
406 671 0399
blaine@cbcmontana.com



COLDWELL BANKER
COMMERCIAL
CBS

SALE

46TH & KING

4600 King Ave W Billings, MT 59106



PROPERTY HIGHLIGHTS

- 4400 block of King Avenue West
- 592 feet of frontage
- Excellent access from 46th Street West
- Level land with all services available
- Close proximity to St. Vincent Healthcare subdivision
- Surrounded by 1000 apartments
- Perfect for healthcare, retail, or wholesale development
- No apartments

OFFERING SUMMARY

Sale Price:	\$2,047,537
Lot Size:	9.401 Acres

Blaine Poppler
 406 671 0399
 blaine@cbcmontana.com



**COLDWELL BANKER
 COMMERCIAL**
 CBS

SALE

46TH & KING

4600 King Ave W Billings, MT 59106



Blaine Poppler
406 671 0399
blaine@cbcmontana.com



**COLDWELL BANKER
COMMERCIAL**
CBS

SALE

46TH & KING

4600 King Ave W Billings, MT 59106



Google

Map data ©2023 Google Imagery ©2023 , Airbus, CNES / Airbus, Maxar Technologies, USDA/FPAC/Geo

Blaine Poppler
406 671 0399
blaine@cbcmontana.com

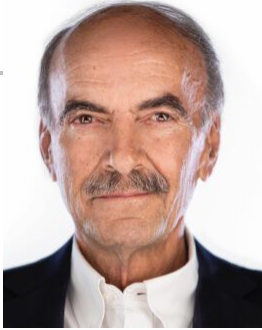


**COLDWELL BANKER
COMMERCIAL**
CBS

SALE

46TH & KING

4600 King Ave W Billings, MT 59106



BLAINE POPPLER

Owner, Commercial Broker

blaine@cbcmontana.com

Direct: 406.671.0399 | Cell: 406.671.0399

MT #7938

PROFESSIONAL BACKGROUND

Blaine Poppler has been with Coldwell Banker Commercial since 1995. Born and raised in Billings Montana gives Blaine a deep understanding of the history and future of commercial real estate in Billings and Yellowstone County Montana. Blaine has specialized in land sales and listings but has over 25 years of experience in all areas of commercial and investment real estate. Knowledge of zoning, subdivision, annexation and superior location have been a benefit to both Sellers and Buyers. Working with builders, developers and investors to acquire top deals in multi-family, retail and industrial tracts also requires providing the tools and experience available to the sellers of development properties. With a lifetime of relations, and knowledge, Blaine knows and understands the goals and the deep rooted relationship so many land owners have with the land that is now in the path of development. With the knowledge and experience to successfully accomplish zoning, subdivision and annexation to the best interest of all involved, both buyers and sellers come out on top and all parties can achieve their goals. Having worked with clients as diverse as churches, agricultural land owners, multi-family developers commercial site locaters and community planners, Blaine has built the relationships required for effective representation of buyers and sellers alike. With a broad inventory of development land listings and new and returning buyers Blaine's busy practice always welcomes the opportunity to discuss and inform new client's goals and opportunities.

MEMBERSHIPS

Yellowstone County Board of Adjustment
Billings Association of Realtors
Silver Circle Award Recipient
Yellowstone County Zoning Commission

CBS

1215 24th Street Suite 240
Billings, MT 59102
406.656.2001

Blaine Poppler

406 671 0399

blaine@cbcmontana.com



**COLDWELL BANKER
COMMERCIAL**
CBS