

LEASE

2525 6TH AVE N, SINGLES

Billings , MT 59101



LEASE RATE \$250.00 - \$500.00 per month

AVAILABLE SF 250 - 350 sf

Michael Speidel
(406) 601-9695
michael@cbcmontana.com

©2023 Coldwell Banker. All Rights Reserved. Coldwell Banker Commercial® and the Coldwell Banker Commercial logos are trademarks of Coldwell Banker Real Estate LLC. The Coldwell Banker® System is comprised of company owned offices which are owned by a subsidiary of Anywhere Advisors LLC and franchised offices which are independently owned and operated. The Coldwell Banker System fully supports the principles of the Equal Opportunity Act.



**COLDWELL BANKER
COMMERCIAL**
CBS

LEASE

2525 6TH AVE N, SINGLES

Billings , MT 59101



LOCATION DESCRIPTION

2525 6th Ave N is a professional office building and currently the home of Towe, Ball Mackey, Sommerfeld & Turner law firm. With small professional offices available for lease, this would be an ideal space for accountants, attorneys, engineers, financial advisors or anyone looking for a quiet, professional space to run their business out of. Located on a busy 6th Ave.

PROPERTY HIGHLIGHTS

- *2 Office Spaces for lease
- *250 SF Single Room Office @ \$250/mo (utilities included)
- *350 SF Two room office @ \$500/month (utilities included)
- *2 shared conference rooms
- *Copy room – Printer available for a small fee
- *Desks available for tenant's use

OFFERING SUMMARY

Lease Rate:	\$250.00 - \$500.00 per month (Full Service)
Available SF:	250 - 350 SF
Building Size:	6,650 SF

Michael Speidel
(406) 601-9695
michael@cbcmontana.com



**COLDWELL BANKER
COMMERCIAL**
CBS

LEASE

2525 6TH AVE N, SINGLES

Billings , MT 59101



LEASE INFORMATION

Lease Type:	Full Service	Lease Term:	Negotiable
Total Space:	250 - 350 SF	Lease Rate:	\$250.00 - \$500.00 per month

AVAILABLE SPACES

SUITE	TENANT	SIZE (SF)	LEASE TYPE	LEASE RATE	DESCRIPTION
Option	Available	250 SF	Full Service	\$250 per month	Desks available for tenant's use
Option	Available	350 SF	Full Service	\$500 per month	Desks available for tenant's use

Michael Speidel
(406) 601-9695
michael@cbcmontana.com

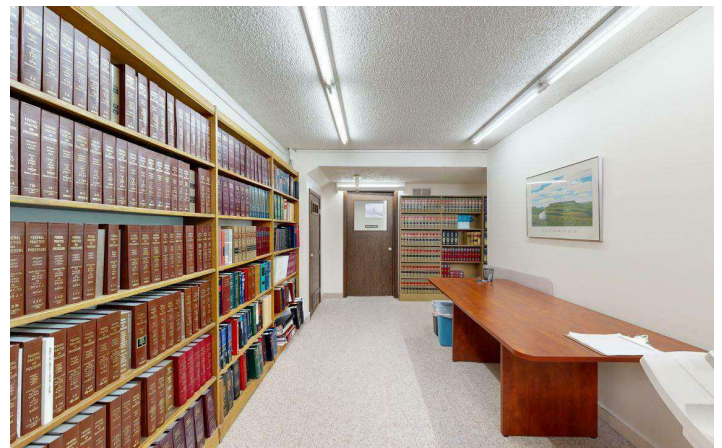
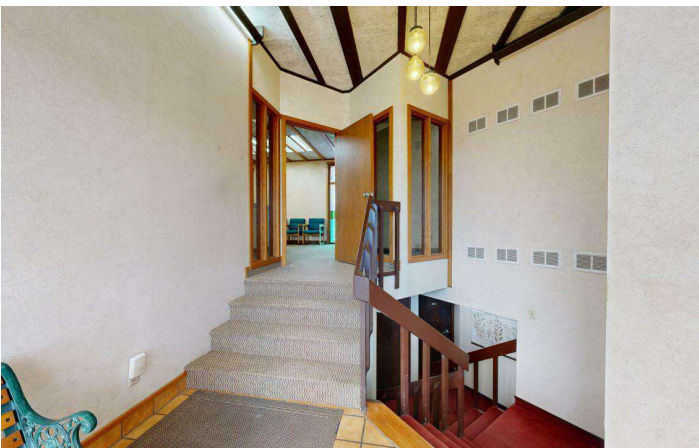
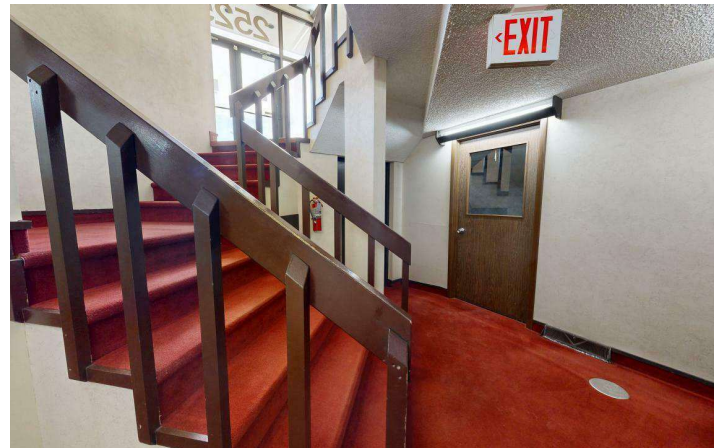


**COLDWELL BANKER
COMMERCIAL**
CBS

LEASE

2525 6TH AVE N, SINGLES

Billings , MT 59101



Michael Speidel
(406) 601-9695
michael@cbcmontana.com



**COLDWELL BANKER
COMMERCIAL**
CBS

LEASE

2525 6TH AVE N, SINGLES

Billings, MT 59101



Michael Speidel
(406) 601-9695
michael@cbcmontana.com

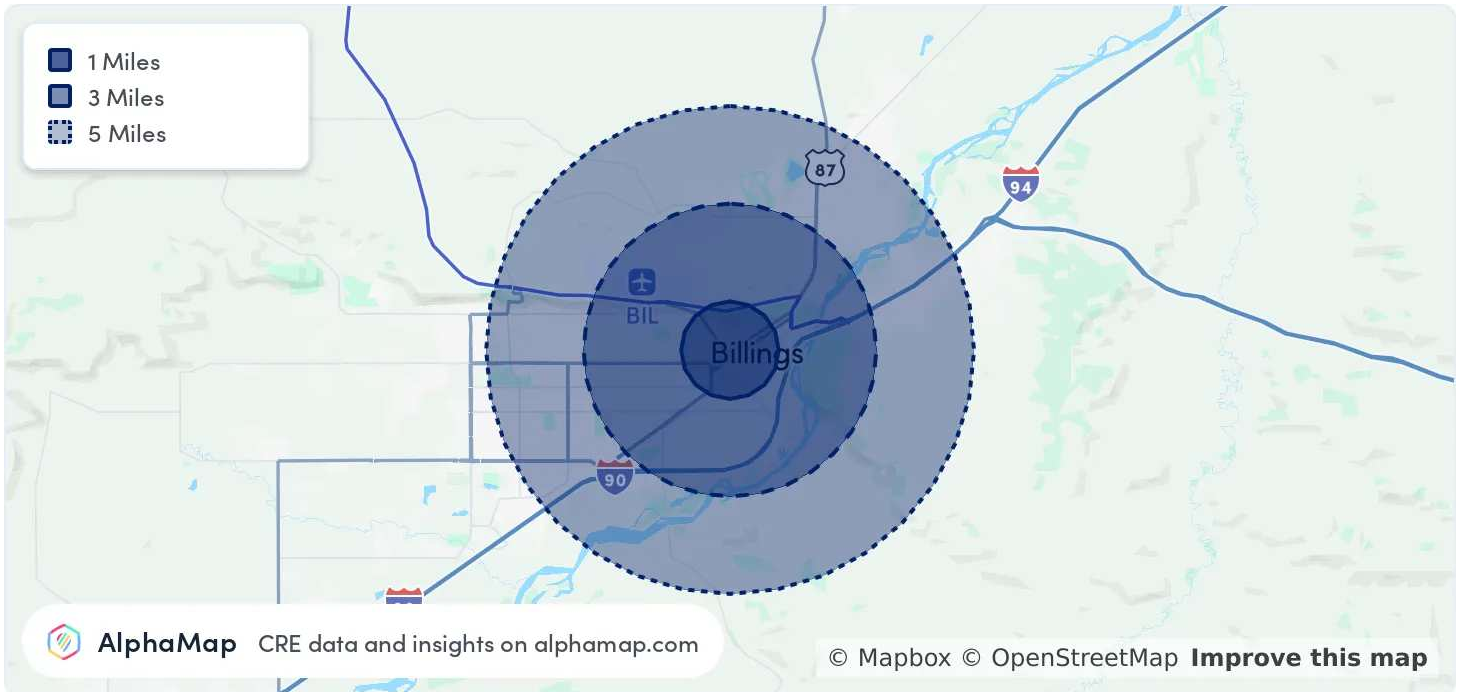


**COLDWELL BANKER
COMMERCIAL**
CBS

LEASE

2525 6TH AVE N, SINGLES

Billings , MT 59101



POPULATION

	1 MILE	3 MILES	5 MILES
Total Population	9,903	59,887	110,243
Average Age	40	39	40
Average Age (Male)	40	38	39
Average Age (Female)	40	40	41

HOUSEHOLD & INCOME

	1 MILE	3 MILES	5 MILES
Total Households	4,835	25,805	46,569
Persons per HH	2	2.3	2.4
Average HH Income	\$65,233	\$80,203	\$86,308
Average House Value	\$372,620	\$347,829	\$365,787
Per Capita Income	\$32,616	\$34,870	\$35,961

Map and demographics data derived from AlphaMap

Michael Speidel
(406) 601-9695
michael@cbcmontana.com



**COLDWELL BANKER
COMMERCIAL**
CBS

LEASE

2525 6TH AVE N, SINGLES

Billings , MT 59101



MICHAEL SPEIDEL

Comm Sales Associate

michael@cbcmontana.com

Direct: (406) 601-9695 | Cell: (406) 601-9695

PROFESSIONAL BACKGROUND

Michael Speidel is a licensed REALTOR for Coldwell Banker Commercial with two decades of executive level healthcare experience both at the Regional and C-Suite level. He has a proven and successful multi-industry track record that includes leading Assisted Living, Skilled Nursing, and physician practice organizations during both pre and post pandemic conditions. He has been nationally recognized by two Fortune 500 companies as an expert in business operations and has committed his professional life to providing uncompromising customer service and delivering exceptional outcomes to his clients.

Michael was raised in the southeastern corner of Wyoming to a farm/ranch family who also ran a highly successful agriculture based real estate brokerage for several years. He was a four year and all conference letterwinner for football at Black Hills State University where he graduated with honors with a degree in exercise physiology and business. Shortly after graduation, he obtained his nursing home administrator's license at the age of 26 and spent 18 years operating Skilled Nursing Facilities eventually specializing in facility/portfolio acquisitions as well as operationally challenged Focused Facilities. He has supervised multi-level Elder Care Continuums and has worked as the Chief Operating Officer at a large surgical practice. Aside from his Real Estate Agent License, Michael also maintains his Licensed Nursing Home Administrator's license in Montana.

Michael is a proud husband and father to 5 boys and spends a great deal of his time attending their sporting events, fly fishing, camping, and hunting. He is a powerlifting enthusiast who has competed in the Big Sky State Games and enjoys volunteering his time coaching lifters of all ages in the weight room. He and his family are enthusiastic supporters of the Billings YMCA where he is a board member, and his wife is a fitness instructor.

Michael is a commercial real estate expert specializing in Retail, Office, Industrial, Multifamily and Senior Housing properties and nothing gives him more satisfaction than helping his clients get what they need out of a commercial property when they are buying, selling or leasing. Whether it is a small business start-up or large corporate acquisition, Michael has the skills to ensure a smooth, successful transaction and is backed by the #1 team in Billings commercial real estate.

CBS

3135 Meadow View Dr.
Billings, MT 59102
406.656.2001

Michael Speidel

(406) 601-9695

michael@cbcmontana.com



**COLDWELL BANKER
COMMERCIAL**
CBS