

# SALE, LAND LEASE, BUILD TO SUIT

## 727 BENCH BLVD

727 Bench Blvd Billings, MT 59105



**SALE PRICE** \$374,900 - \$749,800

**LOT SIZE** 0.76 - 1.58 AC

**Nathan Matelich, CCIM**  
406 781 6889  
nathan@cbcmontana.com

**Todd Sherman**  
406 570 8961  
todd@cbcmontana.com

©2023 Coldwell Banker. All Rights Reserved. Coldwell Banker Commercial® and the Coldwell Banker Commercial logos are trademarks of Coldwell Banker Real Estate LLC. The Coldwell Banker® System is comprised of company owned offices which are owned by a subsidiary of Anywhere Advisors LLC and franchised offices which are independently owned and operated. The Coldwell Banker System fully supports the principles of the Equal Opportunity Act.



**COLDWELL BANKER  
COMMERCIAL**  
CBS



# SALE, LAND LEASE, BUILD TO SUIT

727 BENCH BLVD

727 Bench Blvd Billings, MT 59105



Sale Price

**\$374,900 -  
\$749,800**

## OFFERING SUMMARY

Lot Size:	0.76 - 1.58 AC
Price / SF:	\$10.45 - \$11.33
Zoning:	CMU1-Corridor Mixed Use 1

## PROPERTY OVERVIEW

- \*Seller willing to do long term ground lease or build to suit
- \*North lot is 33,084 SF for sale @ \$374,900 (\$11.33 PSF)
- \*6,000 SF of buildings can fit on north lot
- \*South lot is 35,859 SF for sale @ \$374,900 (\$10.45 PSF)
- \*6,020 SF of buildings with retail drive through can fit on south lot
- \*28 parking spaces can fit on each lot
- \*Both lots are perfectly suited for a 1-4 tenant building
- \*2 full accesses already in place & utilities are stubbed in
- \*Seller will prepare and record condo association documents prior to closing
- \*New 105 Coffee & Brewery under construction across the street

Note: 8,504 SF of ground on north lot where landscaping is along Yellowstone River Rd is on 100 yr land lease from MDT that has been prepaid by seller.

**Nathan Matelich, CCIM**  
406 781 6889  
nathan@cbcmontana.com

**Todd Sherman**  
406 570 8961  
todd@cbcmontana.com



**COLDWELL BANKER  
COMMERCIAL**  
CBS

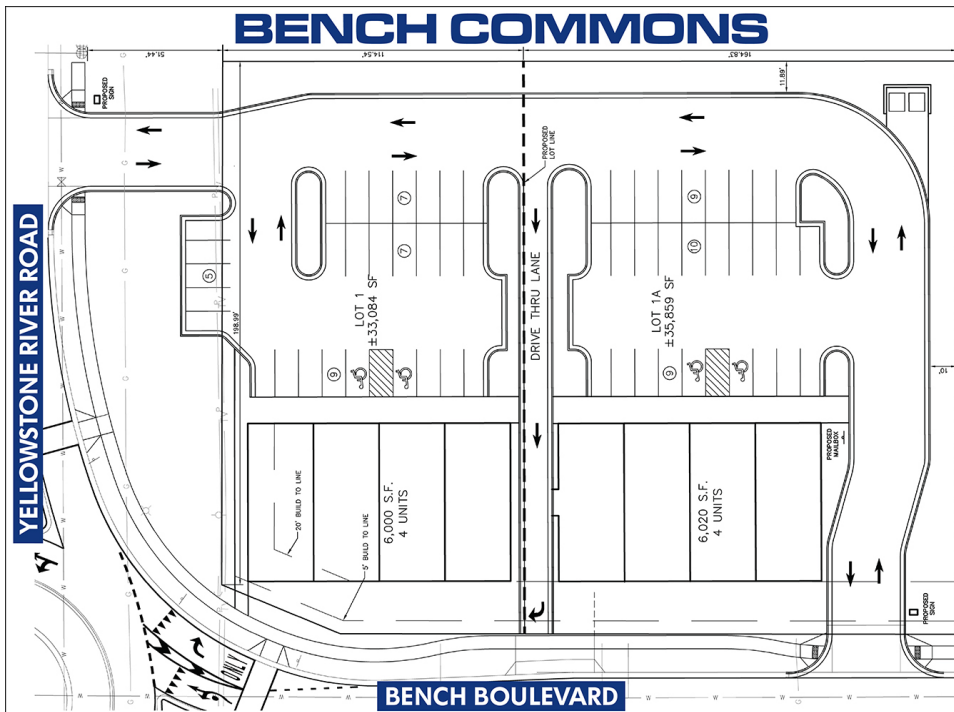
# SALE

## 727 BENCH BLVD

727 Bench Blvd Billings, MT 59105

### LOCATION OVERVIEW

Last remaining prime corner in rapidly growing Billings Heights. Recent expansion makes for high traffic counts and excellent location for retail businesses or professional office building. Zoning allows for Retail, Office, Long Term Care Facilities, Schools, Churches, Government Facilities, Healthcare Facilities, Day Care Facilities, Veterinarians, Commercial Services, Restaurants, Bars (Special Review), Financial Services, Hotels, and Convenience Stores. Enjoy building on a lot that is shovel ready!



#### LEGAL DESCRIPTION:

C.O.S. 1706, PARCEL 1

ZONING: CMU 1

TOTAL BUILDING AREA: 12,020 SF

TOTAL PARKING SHOWN: 56 SPACES



**COLDWELL BANKER  
COMMERCIAL**  
CBS

**Nathan Matelich, CCIM**  
406 781 6889  
nathan@cbcmontana.com

**Todd Sherman**  
406 570 8961  
todd@cbcmontana.com



**COLDWELL BANKER  
COMMERCIAL**  
CBS



# SALE, LAND LEASE, BUILD TO SUIT

727 BENCH BLVD

727 Bench Blvd Billings, MT 59105



**Nathan Matelich, CCIM**  
406 781 6889  
nathan@cbcmontana.com

**Todd Sherman**  
406 570 8961  
todd@cbcmontana.com



**COLDWELL BANKER  
COMMERCIAL**  
CBS



# SALE, LAND LEASE, BUILD TO SUIT

727 BENCH BLVD

727 Bench Blvd Billings, MT 59105



**Nathan Matelich, CCIM**  
406 781 6889  
nathan@cbcmontana.com

**Todd Sherman**  
406 570 8961  
todd@cbcmontana.com



**COLDWELL BANKER  
COMMERCIAL**  
CBS



# SALE

727 BENCH BLVD

727 Bench Blvd Billings, MT 59105



**105 Coffee & Brewery under construction  
across the street.**



**Nathan Matelich, CCIM**  
406 781 6889  
nathan@cbcmontana.com

**Todd Sherman**  
406 570 8961  
todd@cbcmontana.com

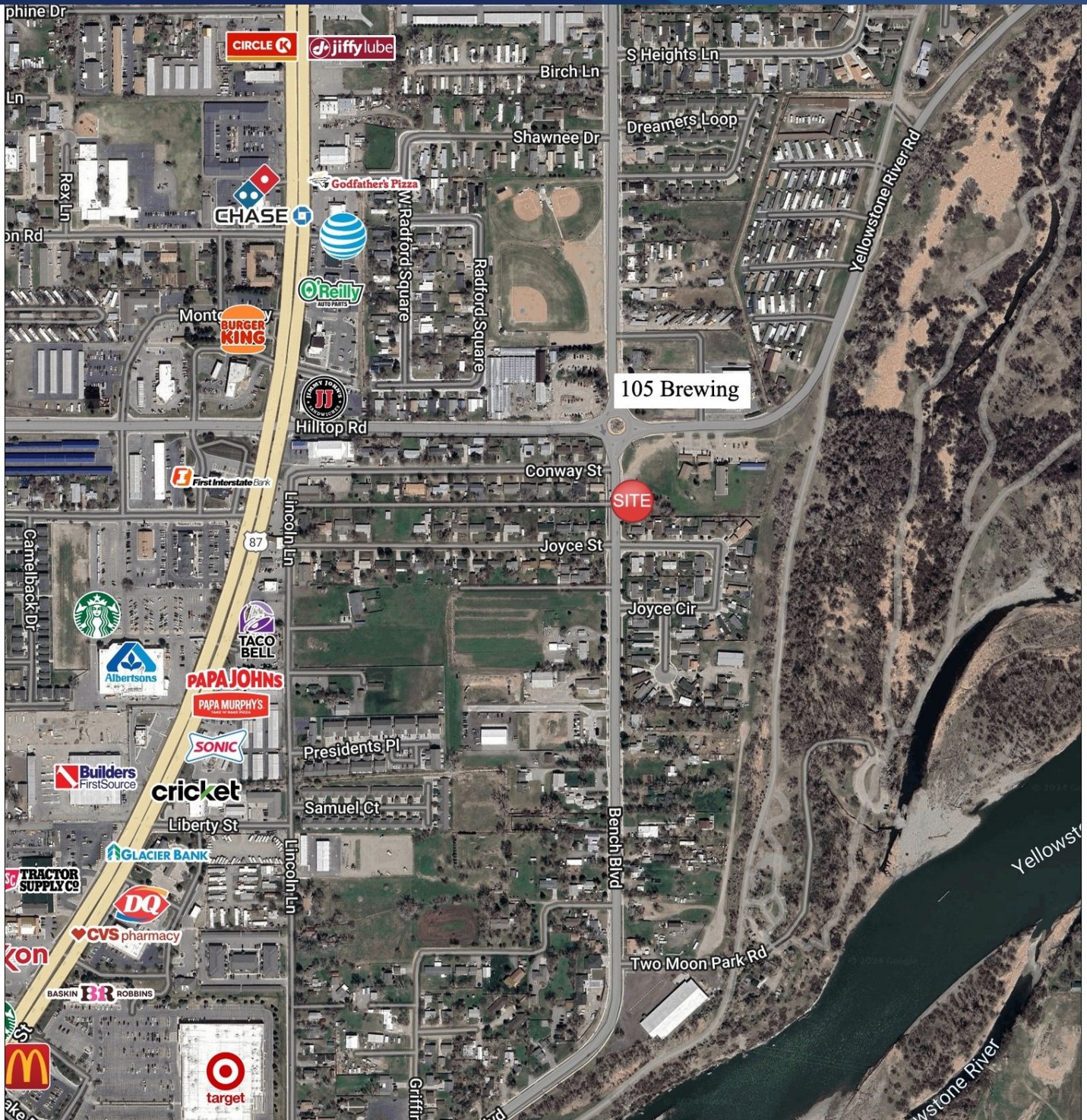


**COLDWELL BANKER  
COMMERCIAL**  
CBS



# SALE, LAND LEASE, BUILD TO SUIT

727 BENCH BLVD  
727 Bench Blvd Billings, MT 59105



Nathan Matelich, CCIM  
406 781 6889  
nathan@cbcmontana.com

Todd Sherman  
406 570 8961  
todd@cbcmontana.com



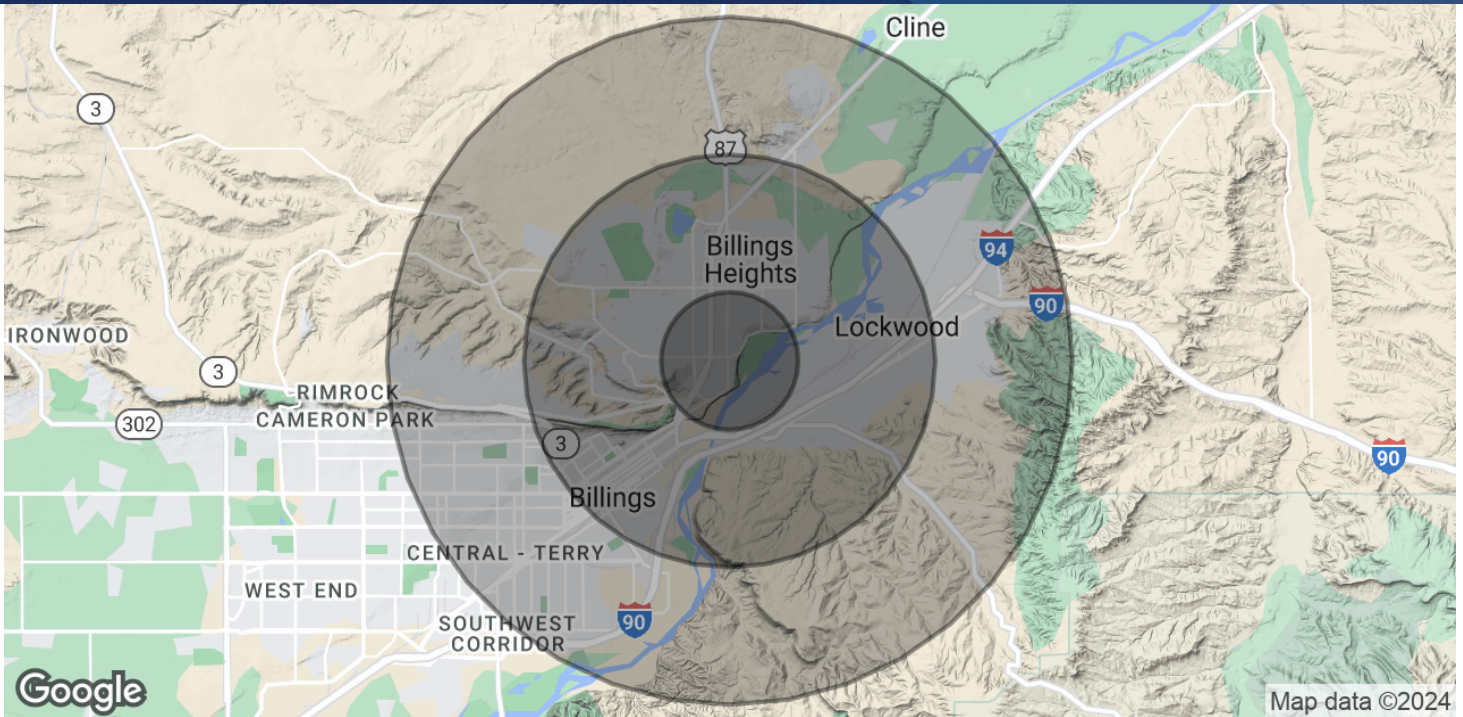
COLDWELL BANKER  
COMMERCIAL  
CBS



# SALE, LAND LEASE, BUILD TO SUIT

727 BENCH BLVD

727 Bench Blvd Billings, MT 59105



## POPULATION

	1 MILE	3 MILES	5 MILES
Total Population	5,636	27,329	62,339
Average Age	35.4	35.6	35.6
Average Age (Male)	36.3	37.1	35.2
Average Age (Female)	34	35.1	36.7

## HOUSEHOLDS & INCOME

	1 MILE	3 MILES	5 MILES
Total Households	2,704	12,448	28,271
# of Persons per HH	2.1	2.2	2.2
Average HH Income	\$55,405	\$65,033	\$65,104
Average House Value	\$282,731	\$305,766	\$251,164

\* Demographic data derived from 2020 ACS - US Census

**Nathan Matelich, CCIM**  
406 781 6889  
nathan@cbcmontana.com

**Todd Sherman**  
406 570 8961  
todd@cbcmontana.com



**COLDWELL BANKER  
COMMERCIAL**  
CBS