

# LEASE

## 20 1ST ST NW

20 1st St NW Park City, MT 59063

LEASE RATE

\$2,500.00 per month



COLDWELL BANKER  
**COMMERCIAL**  
CBS

---

**Nathan Matelich, CCIM**

406 781 6889

©2022 Coldwell Banker. All Rights Reserved. Coldwell Banker and the Coldwell Banker Commercial logos are trademarks of Coldwell Banker Real Estate LLC. The Coldwell Banker® System is comprised of company owned offices which are owned by a subsidiary of Realty Brokerage Group LLC and franchised offices which are independently owned and operated. The Coldwell Banker System fully supports the principles of the Equal Opportunity Act.

# LEASE

**20 1ST ST NW**

20 1st St NW Park City, MT 59063



Lease Rate

**\$2,500.00 PER MONTH**

## OFFERING SUMMARY

Building Size:	6,000 SF
Lot Size:	1.07 Acres
Year Built:	2008

## PROPERTY OVERVIEW

- \*6,000 SF Shop for Lease
- \*\$2,500/mo + Utilities
- \*2 qty 16 ft Overhead Doors
- \*1 qty 12 ft Overhead Door
- \*New, Attractive Building Built in 2008
- \*12' x 12' Office
- \*Bathroom
- \*Large Yard Space
- \*Well & City Sewer
- \*Interstate Frontage & Easy I-90 Access
- \*\$1,945/mo (Base Rent) + \$555/mo (NNN) = \$3,000/mo

## LOCATION OVERVIEW

20 1st St NW, Park City is the perfect building for any business who needs a large shop space to lease, excellent interstate exposure, yard space and easy access to the highway. Built in 2008, this building is new, clean and attractive. Previously this building was used to manufacture and sell sheds.

**Nathan Matelich, CCIM**  
406 781 6889



**COLDWELL BANKER  
COMMERCIAL**  
CBS



# LEASE

**20 1ST ST NW**  
20 1st St NW Park City, MT 59063



**Nathan Matelich, CCIM**  
406 781 6889

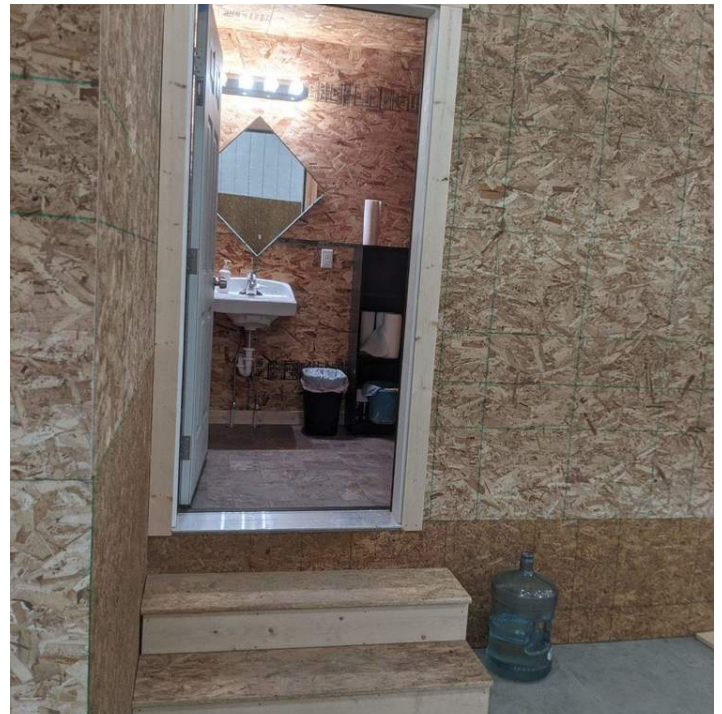


**COLDWELL BANKER**  
**COMMERCIAL**  
CBS



# LEASE

**20 1ST ST NW**  
20 1st St NW Park City, MT 59063



**Nathan Matelich, CCIM**  
406 781 6889



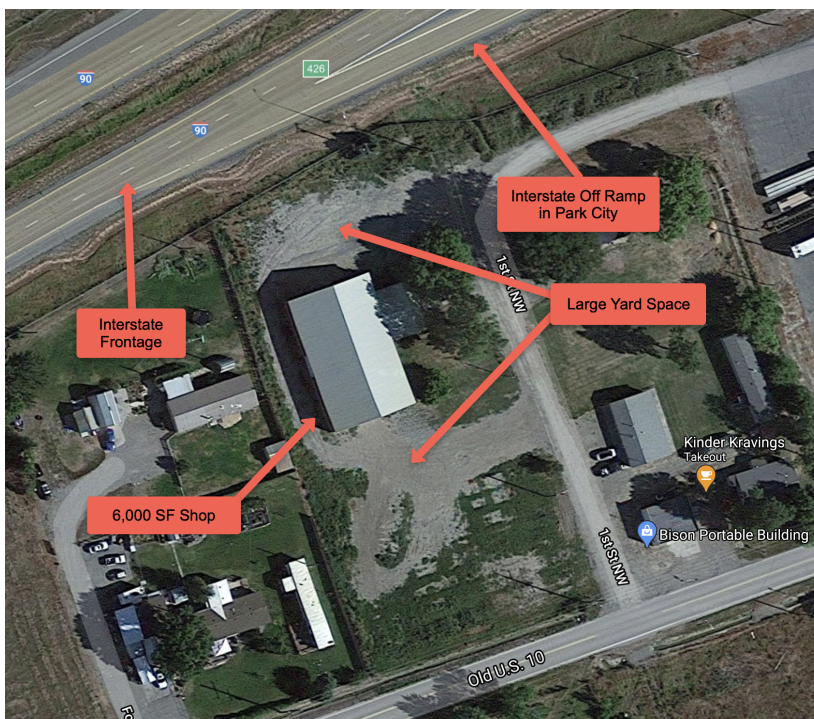
**COLDWELL BANKER**  
**COMMERCIAL**  
CBS



# LEASE

**20 1ST ST NW**

20 1st St NW Park City, MT 59063



**Nathan Matelich, CCIM**  
406 781 6889

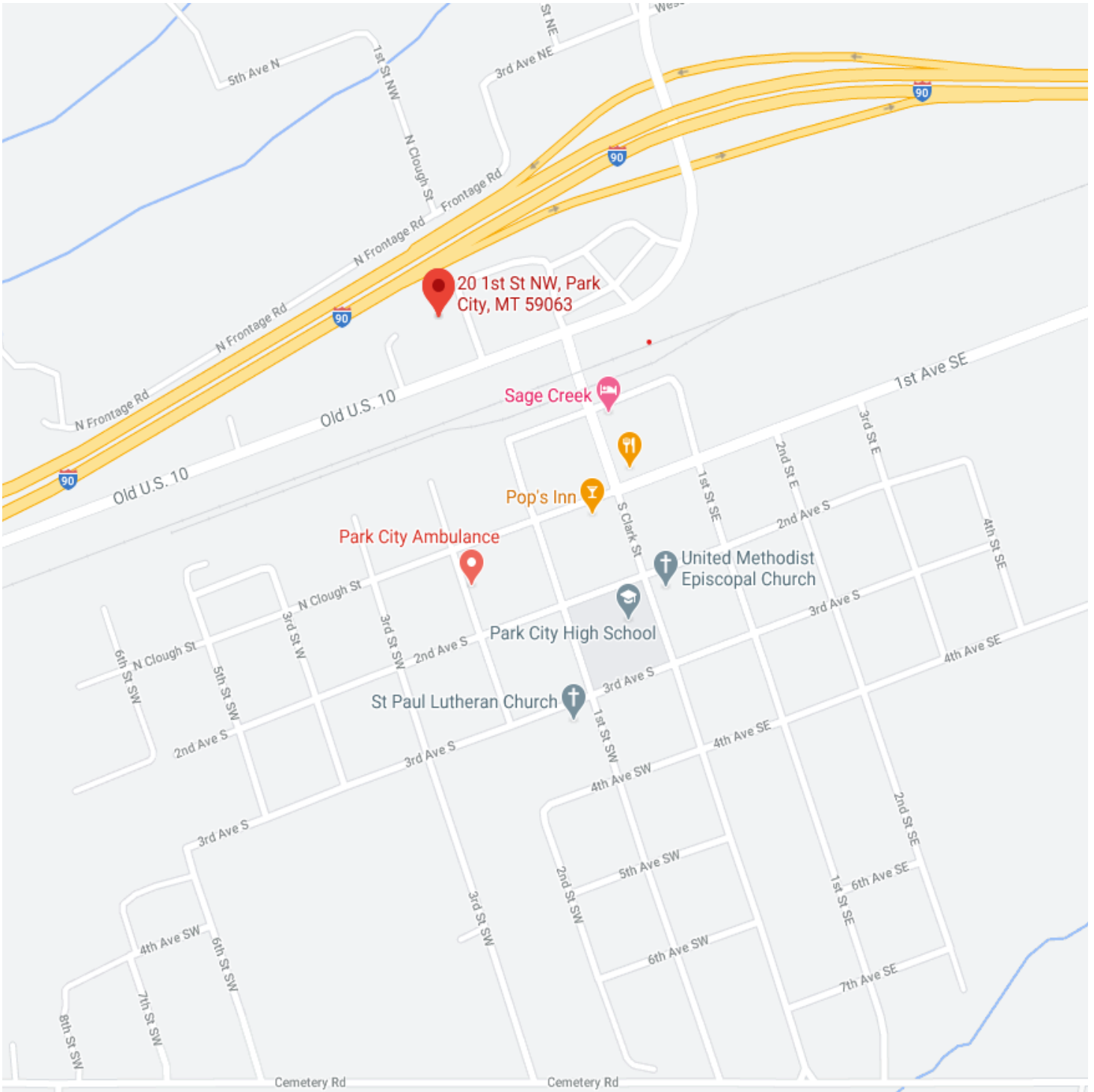


**COLDWELL BANKER  
COMMERCIAL**  
CBS

# LEASE

**20 1ST ST NW**

20 1st St NW Park City, MT 59063



**Nathan Matelich, CCIM**  
406 781 6889



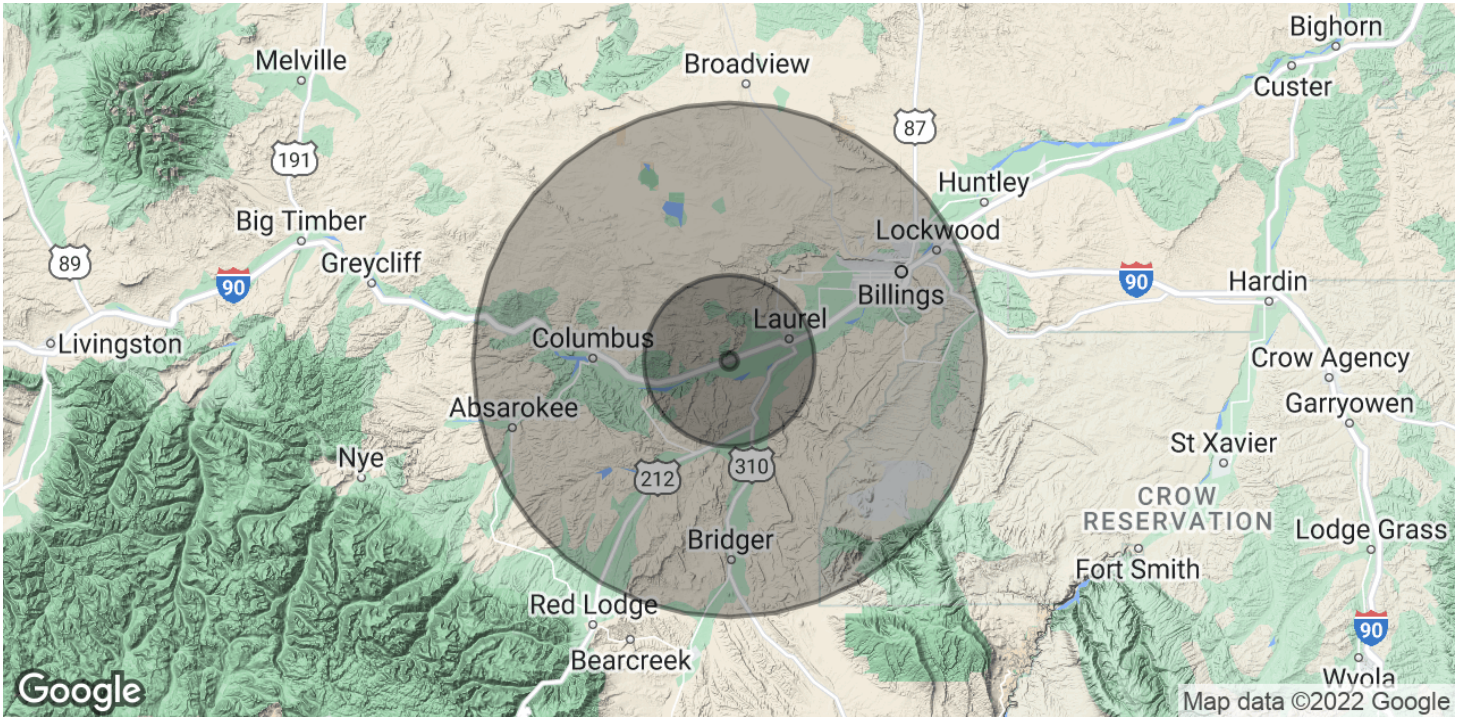
**COLDWELL BANKER  
COMMERCIAL**  
CBS



# LEASE

**20 1ST ST NW**

20 1st St NW Park City, MT 59063



<b>POPULATION</b>	<b>1 MILE</b>	<b>10 MILES</b>	<b>30 MILES</b>
Total Population	44	15,612	163,667
Average Age	45.4	43.5	40.1
Average Age (Male)	47.0	42.0	39.2
Average Age (Female)	42.9	43.8	40.9
<b>HOUSEHOLDS &amp; INCOME</b>	<b>1 MILE</b>	<b>10 MILES</b>	<b>30 MILES</b>
Total Households	16	6,543	74,744
# of Persons per HH	2.8	2.4	2.2
Average HH Income	\$75,620	\$84,422	\$80,067
Average House Value	\$276,286	\$243,585	\$249,329

\* Demographic data derived from 2020 ACS - US Census

**Nathan Matelich, CCIM**  
406 781 6889



**COLDWELL BANKER  
COMMERCIAL**  
CBS