

LEASE

14 1/2 S 27TH ST, BILLINGS, MT

LEASE RATE

\$800.00 per month



**COLDWELL BANKER
COMMERCIAL**
CBS

Mike Bruschwein

406 697 6176

mike@cbcmontana.com

Nathan Matelich, CCIM

406 781 6889

nathan@cbcmontana.com

©2022 Coldwell Banker. All Rights Reserved. Coldwell Banker and the Coldwell Banker Commercial logos are trademarks of Coldwell Banker Real Estate LLC. The Coldwell Banker® System is comprised of company owned offices which are owned by a subsidiary of Realogy Brokerage Group LLC and franchised offices which are independently owned and operated. The Coldwell Banker System fully supports the principles of the Equal Opportunity Act.

LEASE

14 1/2 S 27TH ST

14 1/2 S 27th St Billings, MT 59101



Lease Rate

\$800.00 PER MONTH

OFFERING SUMMARY

Building Size:	13,972 SF
Available SF:	530 SF
Year Built:	1930
Zoning:	Central Business District

PROPERTY OVERVIEW

- *530 of Retail Space for Lease
- *\$800/mo + electric
- *Located on a busy 27th Street in downtown Billings
- *16,000+ cars per day
- *Excellent retail exposure with good signage opportunities
- *Modern tile & luxury vinyl plank flooring
- *Updated restrooms
- *Street parking or free city parking lot just north of the skate park for customers & employees

LOCATION OVERVIEW

14 S 27th St retail space is located on a busy 27th St W. Located near downtown Billings, tenants enjoy walking distance from The Fieldhouse, Wild Ginger, RiverStone Health, Double Tree Hotel and Carters Brewing to name a few. This retail space would be an ideal location for a barber shop, salon, retailer or any small business looking for an affordable space closing to downtown with good exposure.

Mike Bruschwein

406 697 6176

mike@cbcmontana.com

Nathan Matelich, CCIM

406 781 6889

nathan@cbcmontana.com



**COLDWELL BANKER
COMMERCIAL**
CBS

LEASE

14 1/2 S 27TH ST
14 1/2 S 27th St Billings, MT 59101



Mike Bruschwein
406 697 6176
mike@cbcmontana.com

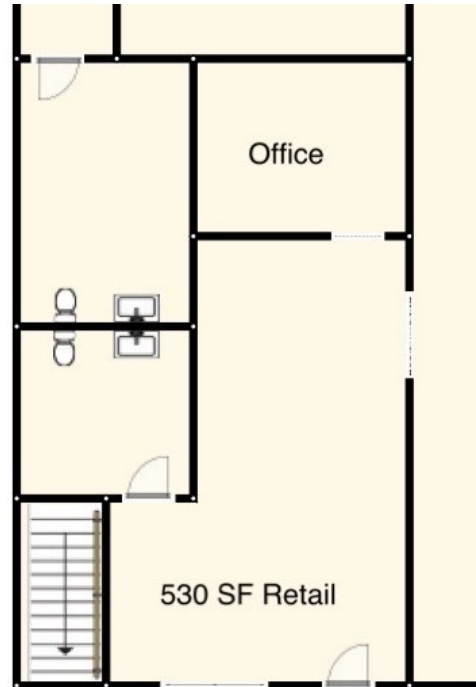
Nathan Matelich, CCIM
406 781 6889
nathan@cbcmontana.com



COLDWELL BANKER
COMMERCIAL
CBS

LEASE

14 1/2 S 27TH ST
14 1/2 S 27th St Billings, MT 59101



Mike Bruschwein
406 697 6176
mike@cbcmontana.com

Nathan Matelich, CCIM
406 781 6889
nathan@cbcmontana.com



COLDWELL BANKER
COMMERCIAL
CBS

LEASE

14 1/2 S 27TH ST
14 1/2 S 27th St Billings, MT 59101



Mike Bruschwein
406 697 6176
mike@cbcmontana.com

Nathan Matelich, CCIM
406 781 6889
nathan@cbcmontana.com

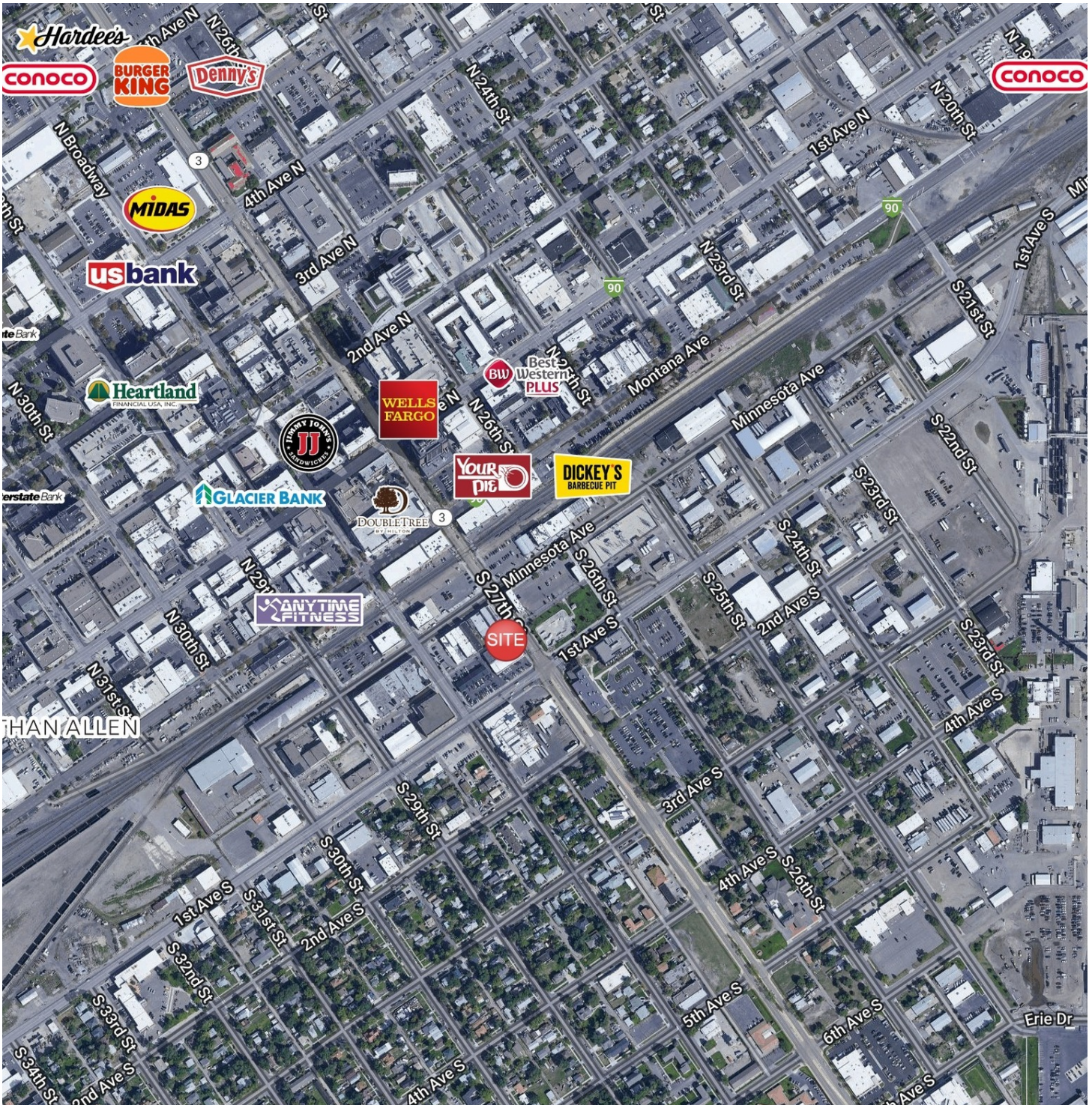


**COLDWELL BANKER
COMMERCIAL**
CBS

LEASE

14 1/2 S 27TH ST

14 1/2 S 27th St Billings, MT 59101



Mike Bruschwein
406 697 6176
mike@cbcmontana.com

Nathan Matelich, CCIM
406 781 6889
nathan@cbcmontana.com



**COLDWELL BANKER
COMMERCIAL**
CBS