

LEASE

2376 MAIN 7,000 SF

2376 Main St, Suite 806 Billings, MT 59105

LEASE RATE

\$9.50 PSF NNN



COLDWELL BANKER
COMMERCIAL
CBS

Nathan Matelich

406 781 6889

nathan@cbcmontana.com

Todd Sherman

406 656 2001

todd@cbcmontana.com

LEASE

2376 MAIN 7,000 SF

2376 Main St, Suite 806 Billings, MT 59105



Lease Rate	\$9.50 PSF NNN
------------	-----------------------

OFFERING SUMMARY

Building Size:	14,000 SF
Available SF:	7,000 SF
Zoning:	CX-Heavy Commercial

PROPERTY OVERVIEW

- *2376 Main St, #806 – Billings Heights
- *7,000 SF of Retail Space for Lease
- *Spaces are idea for daycare, salon, physical therapy, workout facility, dance or group classes
- *Fenced yard behind building perfect for a daycare or outside storage
- *\$9.50 PSF NNN
- *NNN = \$3 PSF
- *Zoned CX-Heavy Commercial
- *Plenty of Parking
- *ADA Restrooms
- *Fully designed and ready for permitting for a daycare

Nathan Matelich
406 781 6889
nathan@cbcmontana.com

Todd Sherman
406 656 2001
todd@cbcmontana.com



**COLDWELL BANKER
COMMERCIAL**
CBS

LEASE

2376 MAIN 7,000 SF

2376 Main St, Suite 806 Billings, MT 59105



Nathan Matelich
406 781 6889
nathan@cbcmontana.com

Todd Sherman
406 656 2001
todd@cbcmontana.com



COLDWELL BANKER
COMMERCIAL
CBS

LEASE

2376 MAIN 7,000 SF

2376 Main St, Suite 806 Billings, MT 59105



Nathan Matelich
406 781 6889
nathan@cbcmontana.com

Todd Sherman
406 656 2001
todd@cbcmontana.com



COLDWELL BANKER
COMMERCIAL
CBS

LEASE

2376 MAIN 7,000 SF

2376 Main St, Suite 806 Billings, MT 59105



Nathan Matelich
406 781 6889
nathan@cbcmontana.com

Todd Sherman
406 656 2001
todd@cbcmontana.com

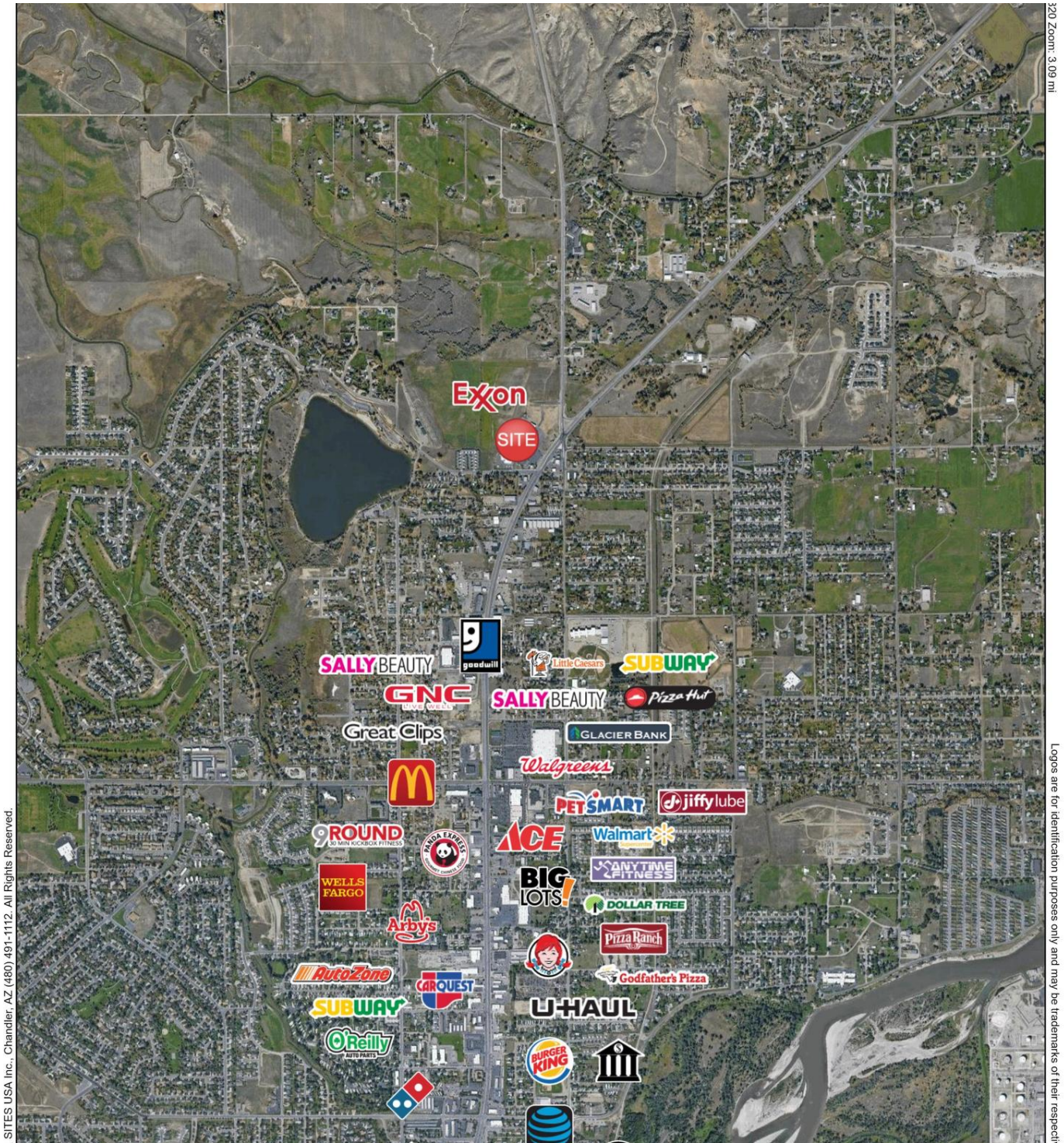


COLDWELL BANKER
COMMERCIAL
CBS

LEASE

2376 MAIN 7,000 SF

2376 Main St, Suite 806 Billings, MT 59105



Nathan Matelich
406 781 6889
nathan@cbcmontana.com

Todd Sherman
406 656 2001
todd@cbcmontana.com



COLDWELL BANKER
COMMERCIAL
CBS