

SALE

27 & 35 WICKS LANE

27 & 35 Wicks Lane Billings, MT 59105

SALE PRICE

\$339,000



COLDWELL BANKER
COMMERCIAL
CBS

George Warmer, CCIM

O: 406 855 8946 | C: 406 855 8946
george@cbcmontana.com

Todd Sherman

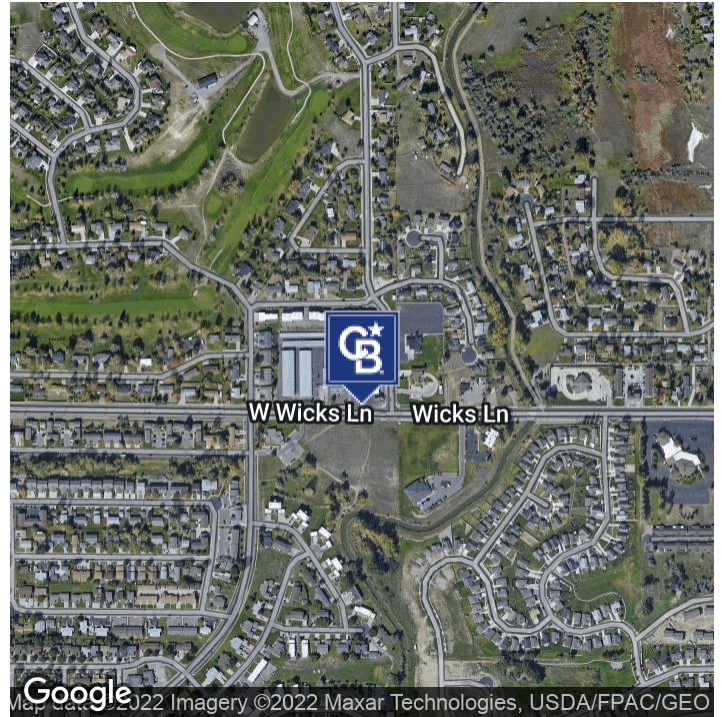
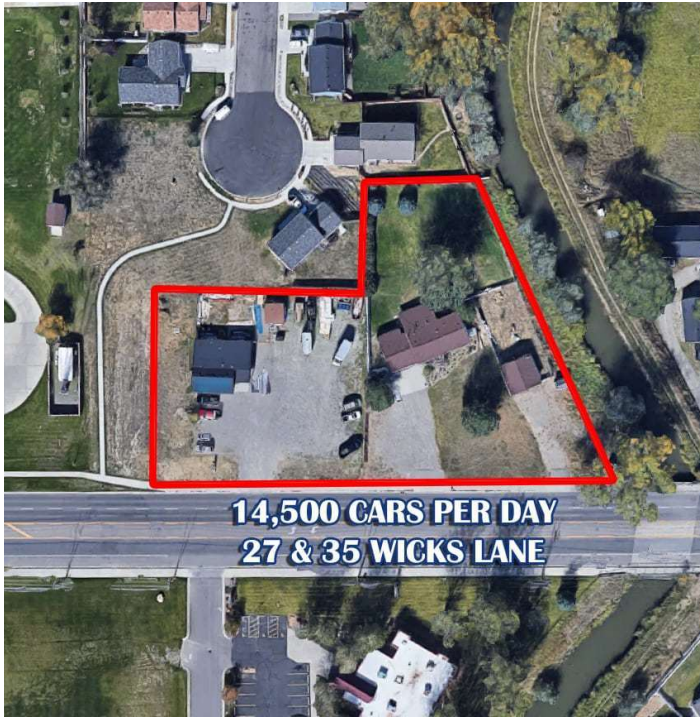
O: 406 656 2001 | C: 406 570 8961
todd@cbcmontana.com

©2022 Coldwell Banker. All Rights Reserved. Coldwell Banker and the Coldwell Banker Commercial logos are trademarks of Coldwell Banker Real Estate LLC. The Coldwell Banker® System is comprised of company owned offices which are owned by a subsidiary of Realogy Brokerage Group LLC and franchised offices which are independently owned and operated. The Coldwell Banker System fully supports the principles of the Equal Opportunity Act.

SALE

27 & 35 WICKS LANE

27 & 35 Wicks Lane Billings, MT 59105



OFFERING SUMMARY

| | |
|----------------|--------------------------------------|
| Sale Price: | \$339,000 |
| Building Size: | 1,502 SF |
| Lot Size: | 27,525 SF |
| Price / SF: | \$225.70 |
| Zoning: | CMU1-Corridor Mixed Use ₁ |

PROPERTY OVERVIEW

- Prime Billings Heights development location
- 1502 Office space
- 27,525 Square foot Lot
- Excellent Wicks Lane exposure
- Zoned Corridor Mixed Use-1
- 15,000 Cars per day

George Warner, CCIM
O: 406 855 8946 | C: 406 855 8946
george@cbcmontana.com

Todd Sherman
O: 406 656 2001 | C: 406 570 8961
todd@cbcmontana.com



COLDWELL BANKER
COMMERCIAL
CBS

PICTURES

27 & 35 WICKS LANE
27 & 35 Wicks Lane Billings, MT 59105



George Warmer, CCIM
O: 406 855 8946 | C: 406 855 8946
george@cbcmontana.com

Todd Sherman
O: 406 656 2001 | C: 406 570 8961
todd@cbcmontana.com

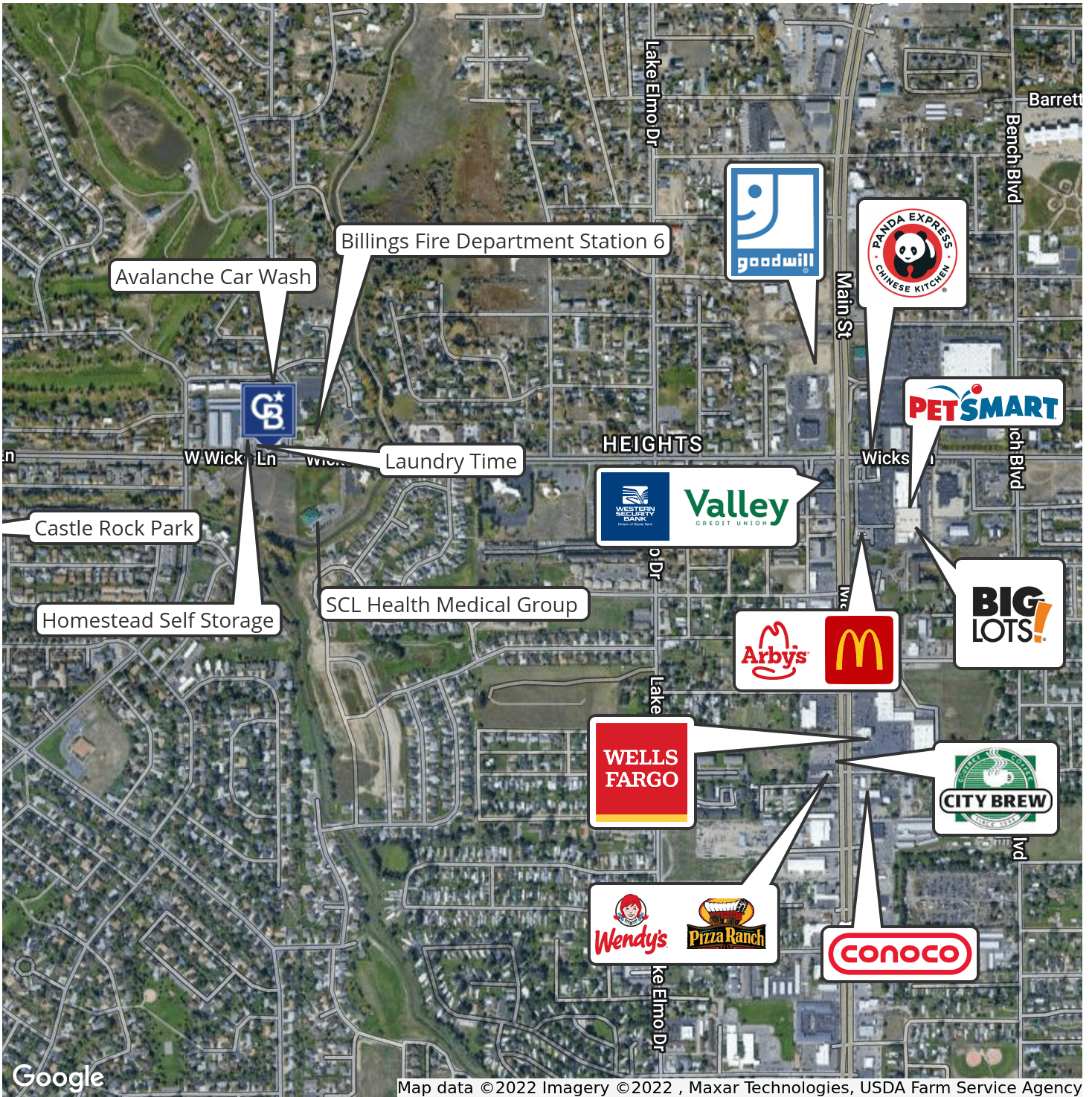


COLDWELL BANKER
COMMERCIAL
CBS

MAP

27 & 35 WICKS LANE

27 & 35 Wicks Lane Billings, MT 59105



George Warner, CCIM
O: 406 855 8946 | C: 406 855 8946
george@cbcmontana.com

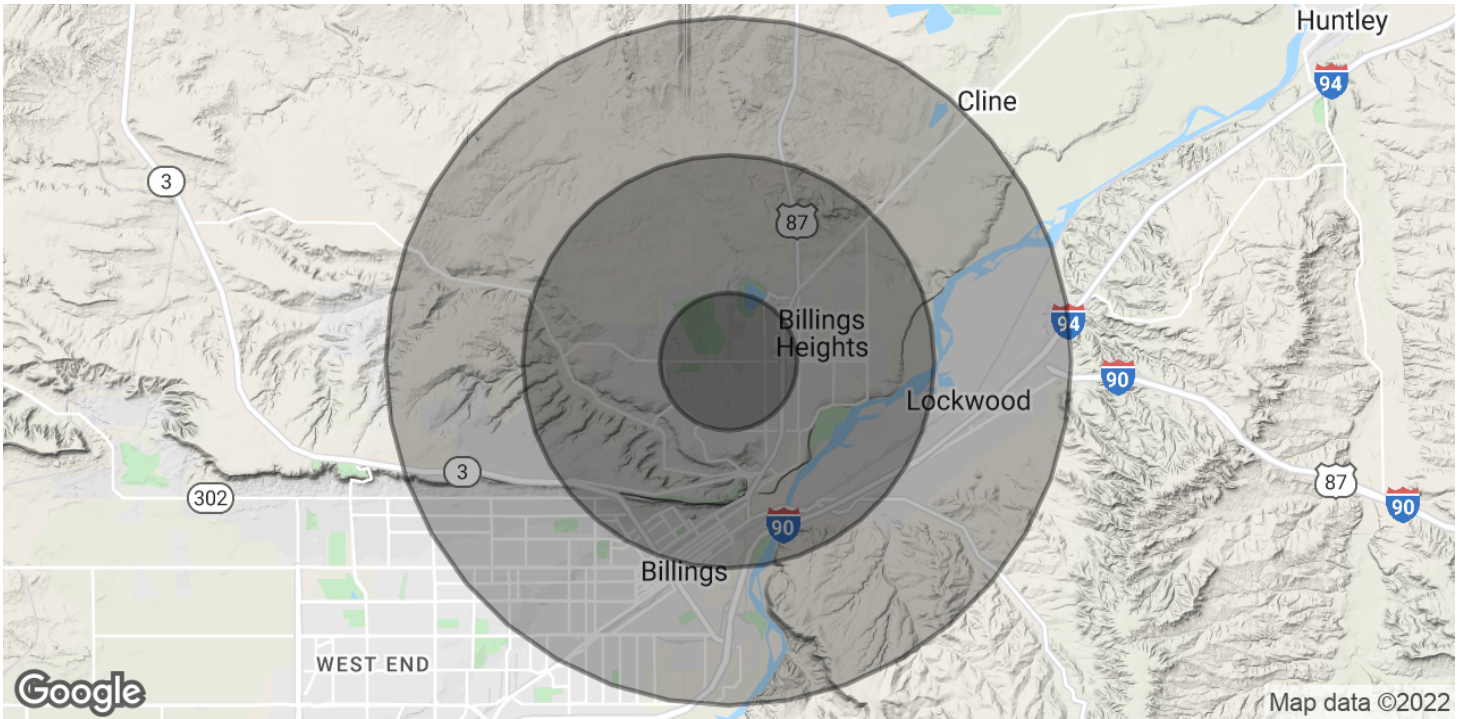
Todd Sherman
O: 406 656 2001 | C: 406 570 8961
todd@cbcmontana.com



**COLDWELL BANKER
COMMERCIAL**
CBS

DEMOGRAPHICS

27 & 35 WICKS LANE
27 & 35 Wicks Lane Billings, MT 59105



| POPULATION | 1 MILE | 3 MILES | 5 MILES |
|--------------------------------|---------------|----------------|----------------|
| Total Population | 8,472 | 33,529 | 73,226 |
| Average Age | 36.2 | 36.2 | 35.4 |
| Average Age (Male) | 33.7 | 34.4 | 33.9 |
| Average Age (Female) | 38.4 | 37.9 | 37.6 |
| HOUSEHOLDS & INCOME | 1 MILE | 3 MILES | 5 MILES |
| Total Households | 3,486 | 13,777 | 30,304 |
| # of Persons per HH | 2.4 | 2.4 | 2.4 |
| Average HH Income | \$62,976 | \$58,166 | \$53,595 |
| Average House Value | | \$156,587 | \$158,971 |

* Demographic data derived from 2010 US Census

George Warmer, CCIM
O: 406 855 8946 | C: 406 855 8946
george@cbcmontana.com

Todd Sherman
O: 406 656 2001 | C: 406 570 8961
todd@cbcmontana.com



COLDWELL BANKER
COMMERCIAL
CBS

SALE

27 & 35 WICKS LANE
27 & 35 Wicks Lane Billings, MT 59105



GEORGE WARMER, CCIM

Managing Partner

george@cbcmontana.com

Direct: 406.855.8946 | Cell: 406.855.8946

MT #RRE-RBS-LIC-14174

PROFESSIONAL BACKGROUND

George Warmer is the Managing Broker of Coldwell Banker Commercial CBS, specializing in sales, leasing, and development of commercial properties in Montana. George is a licensed REALTOR® and has worked in the commercial real estate business since 2005. During that time, he has brokered millions of dollars in leasing and sales transactions.

TRANSACTIONS OF NOTE

Sale: 52,000 SF Fed Ex Facility and releasing of facility Sale: Shiloh Commons a 65,000 SF Mixed-Use Development; 108 Acre Montana Sapphire Mix Use Development Leases: 10,000 SF Tyler Tech Lease Leases: 8,000 SF Tetra Tech Lease Leases: 10,000 SF Pizza Ranch Lease Leases: Various including Burger King, Steak & Shake, HD Water Supply, Womack, Rent A Center, Greyhound Lines, Ace Hardware and O'Reilly Auto Parts.

EDUCATION

In 1987 George graduated with a Bachelor of Arts degree from USC and a MBA from the University of Denver in 1995. George's background in banking and management of personally owned businesses gave George a unique insight into the needs of his commercial clients. As a CCIM designee, George offers his clients the valuable analytical tools necessary to make sound commercial real estate decisions.

MEMBERSHIPS

In addition to handling his own commercial property listings portfolio and maintaining a large client base, George is actively involved in several trade, civic and community organizations. INDUSTRY International Council of Shopping Centers (ICSC): Member Certified Commercial Investment Member (CCIM): Member Billings Association of REALTORS: Member National Association of REALTORS®: Member COMMUNITY Billings Library Foundation: Treasurer/Finance Chair East Billings Industrial Revitalization Board: Member Downtown Rotary: Member

CBS

1215 24th Street Suite 240
Billings, MT 59102
406.656.2001

George Warmer, CCIM
O: 406 855 8946 | C: 406 855 8946
george@cbcmontana.com

Todd Sherman
O: 406 656 2001 | C: 406 570 8961
todd@cbcmontana.com



COLDWELL BANKER
COMMERCIAL
CBS

SALE

27 & 35 WICKS LANE
27 & 35 Wicks Lane Billings, MT 59105



TODD SHERMAN

Comm Sales Associate

todd@cbcmontana.com

Direct: 406.656.2001 | **Cell:** 406.570.8961

MT #54530

PROFESSIONAL BACKGROUND

Todd Sherman is a Licensed Commercial Realtor in Billings, Montana for Coldwell Banker Commercial CBS. He has spent the last several years specializing in Sales, Leasing, and Commercial development. Todd works throughout the state finding suitable locations for National tenants, as well as working with Owners and Landlords listing all kinds of Commercial properties including; business sales, land, Industrial facilities, Hospitality, and Medical facilities. Since joining the Coldwell Banker Commercial team in 2018, Todd has been Rookie of the Year as well as Top Producer in 2020, with over \$8 Million in revenue. In 1988, Todd graduated from University Of Oregon with a Bachelor of Science in Business Communications. He spent the next 28 years managing title insurance companies in Oregon, Washington, and Montana. With his extensive industry related background, Todd has an extensive network of Real Estate Professionals and Affiliates throughout the region. Through this network, Todd is able to effectively connect Buyers and Tenants to Sellers and Landlords.

EDUCATION

University of Oregon
BS in Business Communications

MEMBERSHIPS

Todd has been actively involved in trade and civic organizations such as The Big Sky Economic Development Corporation, Chamber of Commerce, Homebuilders Association, Association of REALTORS, Downtown Exchange Club, and East Billings Industrial Revitalization Board. Todd is passionate about what he does, and his enthusiasm for Commercial real estate becomes evident very quickly.

CBS

1215 24th Street Suite 240
Billings, MT 59102
406.656.2001

George Warner, CCIM
O: 406 855 8946 | C: 406 855 8946
george@cbcmontana.com

Todd Sherman
O: 406 656 2001 | C: 406 570 8961
todd@cbcmontana.com



COLDWELL BANKER
COMMERCIAL
CBS