



**COLDWELL
BANKER
COMMERCIAL**

CBS

FOR LEASE

**HEDDEN EMPIRE BUILDING
208 NORTH 29TH STREET**

Billings, MT 59101

3D TOUR
[Click Here](#)

CBCMONTANA.COM



OFFICE

Kyle Schlichenmayer, CCIM
Commercial Real Estate Specialist
406.698.1899
kyle@cbcmontana.com

David Mitchell, SIOR/CCIM
Principal | Broker
406.794.3404
d@cbcmontana.com

©2022 Coldwell Banker. All Rights Reserved. Coldwell Banker and the Coldwell Banker Commercial logos are trademarks of Coldwell Banker Real Estate LLC. The Coldwell Banker® System is comprised of company owned offices which are owned by a subsidiary of Realogy Brokerage Group LLC and franchised offices which are independently owned and operated. The Coldwell Banker System fully supports the principles of the Equal Opportunity Act.

**COLDWELL BANKER COMMERCIAL
CBS**
1215 24th Street, Suite 240, Billings, MT 59102
406.656.2001



208 NORTH 29TH STREET

LEASE



OFFERING SUMMARY

Available SF: See next page

Zoning: Central Business District

PROPERTY OVERVIEW

As committed supporters of Downtown Billings, The Hedden Empire Building ownership has partnered with the Downtown Billings Alliance to provide standard membership in the DBA to all of their tenants. Membership includes such benefits as: an online member, downtown guide map listing, DBA member toolkit, member events and networking, access to parking validation program, access to CPTED evaluation, and access to DBA ally card program. More info regarding the DBA can be found at downtownbillings.com

Carpet and paint allowance available for qualified Tenant.

Underground parking available at \$65/month per spot.

Off street parking available at \$45/month per spot.

Recycling is a new amenity for all tenants in the building. Installation of the bins by Earth First Aid is still in progress. It will include two locked 3-ton cardboard bins in the back alley. Metal, paper, plastic and shredding bins will be in the basement in the SW corner of the building underneath the yarn bar and accessible via the elevator.

3D Virtual tour available at: <https://tinyurl.com/2mc8rj99>

CBCMONTANA.COM

Kyle Schlichenmayer, CCIM
Commercial Real Estate Specialist
406 698 1899
kyle@cbcmontana.com

David Mitchell, SIOR/CCIM
Principal | Broker
406 794 3404
d@cbcmontana.com

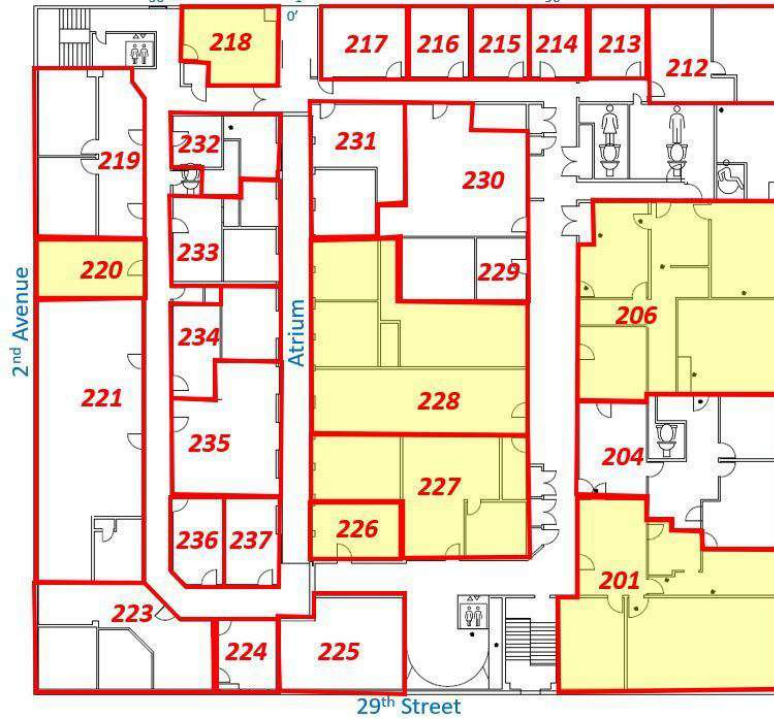


CBS



208 NORTH 29TH STREET

LEASE



AVAILABLE SPACES

| SUITE | TENANT | SIZE (SF) | LEASE TYPE | LEASE RATE |
|-------|-----------|-----------|------------|-------------------|
| 201 | Available | 1,420 SF | Gross | \$1,775 per month |
| 206 | Available | 1,240 SF | Gross | \$1,550 per month |
| 218 | Available | 160 SF | Gross | \$400 per month |
| 220 | Available | 235 SF | Gross | \$450 per month |
| 226 | Available | 225 SF | Gross | \$285 per month |
| 227 | Available | 865 SF | Gross | \$1,085 per month |
| 228 | Available | 1,130 SF | Gross | \$1,413 per month |

CBCMONTANA.COM

Kyle Schlichenmayer, CCIM
 Commercial Real Estate Specialist
 406 698 1899
 kyle@cbcmontana.com

David Mitchell, SIOR/CCIM
 Principal | Broker
 406 794 3404
 d@cbcmontana.com

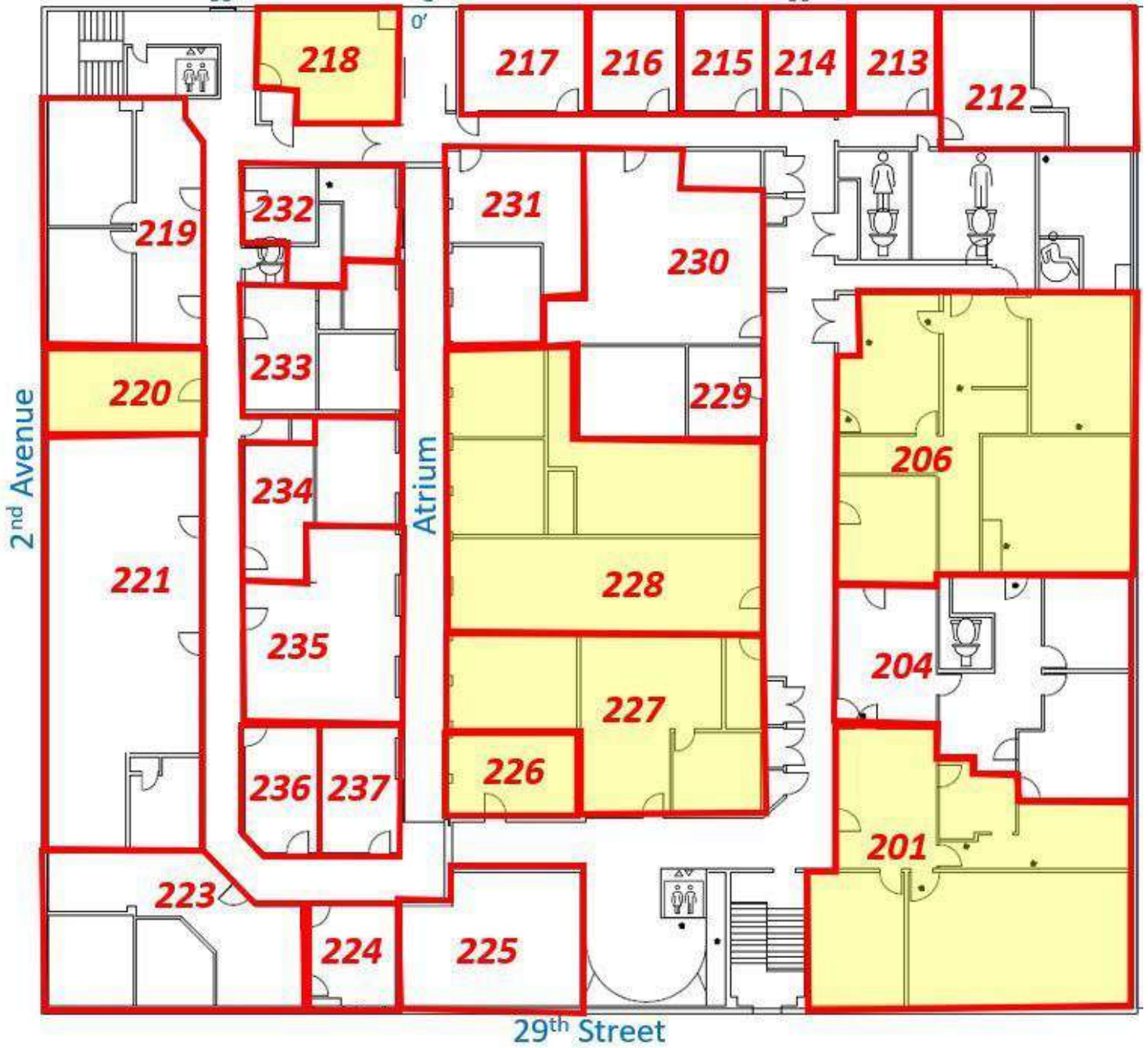


CBS



208 NORTH 29TH STREET

LEASE



CBCMONTANA.COM

Kyle Schlichenmayer, CCIM
Commercial Real Estate Specialist
406 698 1899
kyle@cbcmontana.com

David Mitchell, SIOR/CCIM
Principal | Broker
406 794 3404
d@cbcmontana.com



COLDWELL
BANKER
COMMERCIAL

CBS



208 NORTH 29TH STREET

LEASE



CBCMONTANA.COM

Kyle Schlichenmayer, CCIM
Commercial Real Estate Specialist
406 698 1899
kyle@cbcmontana.com

David Mitchell, SIOR/CCIM
Principal | Broker
406 794 3404
d@cbcmontana.com



CBS



SUITE 201

LEASE



CBCMONTANA.COM

Kyle Schlichenmayer, CCIM
Commercial Real Estate Specialist
406 698 1899
kyle@cbcmontana.com

David Mitchell, SIOR/CCIM
Principal | Broker
406 794 3404
d@cbcmontana.com



**COLDWELL
BANKER
COMMERCIAL**

CBS



SUITE 220

LEASE



CBCMONTANA.COM

Kyle Schlichenmayer, CCIM
Commercial Real Estate Specialist
406 698 1899
kyle@cbcmontana.com

David Mitchell, SIOR/CCIM
Principal | Broker
406 794 3404
d@cbcmontana.com



CBS



SUITE 227

LEASE



CBCMONTANA.COM

Kyle Schlichenmayer, CCIM
Commercial Real Estate Specialist
406 698 1899
kyle@cbcmontana.com

David Mitchell, SIOR/CCIM
Principal | Broker
406 794 3404
d@cbcmontana.com



CBS



SUITE 228

LEASE



CBCMONTANA.COM

Kyle Schlichenmayer, CCIM
Commercial Real Estate Specialist
406 698 1899
kyle@cbcmontana.com

David Mitchell, SIOR/CCIM
Principal | Broker
406 794 3404
d@cbcmontana.com



CBS



208 NORTH 29TH STREET

Billings, MT 59101

LEASE



CBCMONTANA.COM

Kyle Schlichenmayer, CCIM
 Commercial Real Estate Specialist
 406 698 1899
 kyle@cbcmontana.com

David Mitchell, SIOR/CCIM
 Principal | Broker
 406 794 3404
 d@cbcmontana.com



CBS