



**COLDWELL
BANKER
COMMERCIAL**

CBS

FOR SALE

3250 HANNON ST

Billings, MT 59101

AVAILABLE SPACE

6.88 Acres

ASKING PRICE

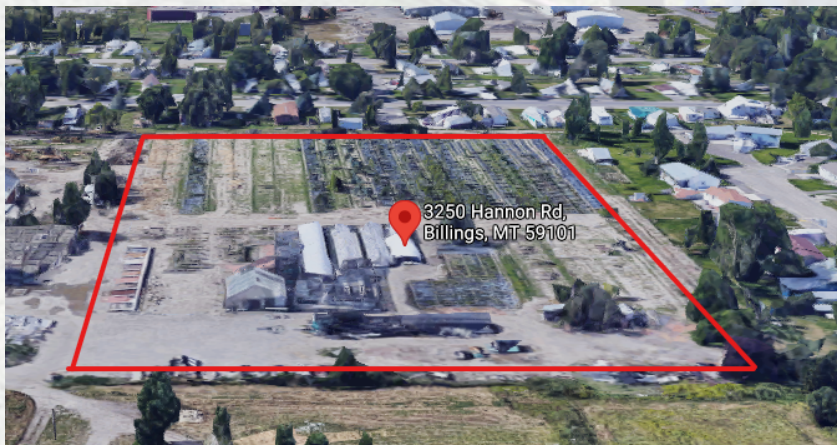
\$549,000

AREA

6.88 acres of land for sale in SE Billings.

Two lots available

Located near Billings West end shopping and restaurants



OFFICE

Todd Sherman
406 656 2001
todd@cbcmontana.com

Shaylee Green
406 656 2001
shaylee@cbcmontana.com

©2021 Coldwell Banker. All Rights Reserved. Coldwell Banker and the Coldwell Banker Commercial logos are trademarks of Coldwell Banker Real Estate LLC. The Coldwell Banker® System is comprised of company owned offices which are owned by a subsidiary of Realogy Brokerage Group LLC and franchised offices which are independently owned and operated. The Coldwell Banker System fully supports the principles of the Equal Opportunity Act.

**COLDWELL BANKER COMMERCIAL
CBS**

1215 24th Street, Suite 240, Billings, MT 59102
406.656.2001

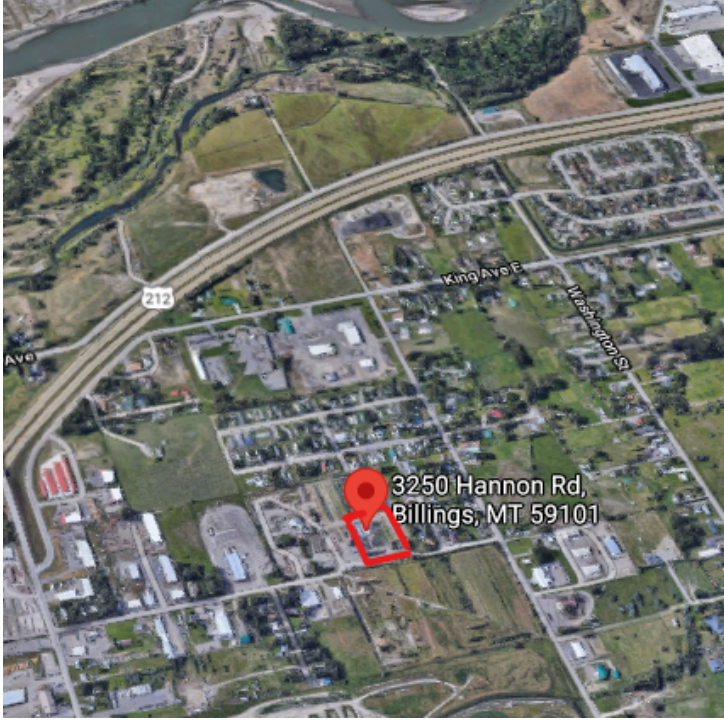
CBCWORLDWIDE.COM



3250 HANNON ST

Billings, MT 59101

SALE



OFFERING SUMMARY

Sale Price: \$549,000

Lot Size: 6.88 Acres

Zoning: NMU-Neighborhood
Mixed-Use

Price / SF: \$1.90

PROPERTY OVERVIEW

6.88 acres of land for sale in SE Billings.
Two lots available:
3.4 Acres
3.5 Acres
Available for sale together or separately.
Seller will negotiate greenhouses on-site

Zoning:
NMU Zoning allows residential and Commercial uses.
The prior zoning of the parcel was Residential 15,000 (R-150). The new zoning allows this use and wide variety of other uses on the property with or without special review approval. NMU has limited restrictions for commercial uses.

Specific Allowed uses here - Schools, daycare, healthcare, Less than 50,000 sf amusement park, Adult daycare, Animal Boarding, Veterinary clinic, Restaurant, Bed and Breakfast, Office, Commercial Greenhouse/Nursery.

PROPERTY HIGHLIGHTS

- Formerly the Field of Dreams Nursery
- 2 wells with pump houses
- Electrical on site

CBCWORLDWIDE.COM

Todd Sherman
406 656 2001
todd@cbcmontana.com

Shaylee Green
406 656 2001
shaylee@cbcmontana.com



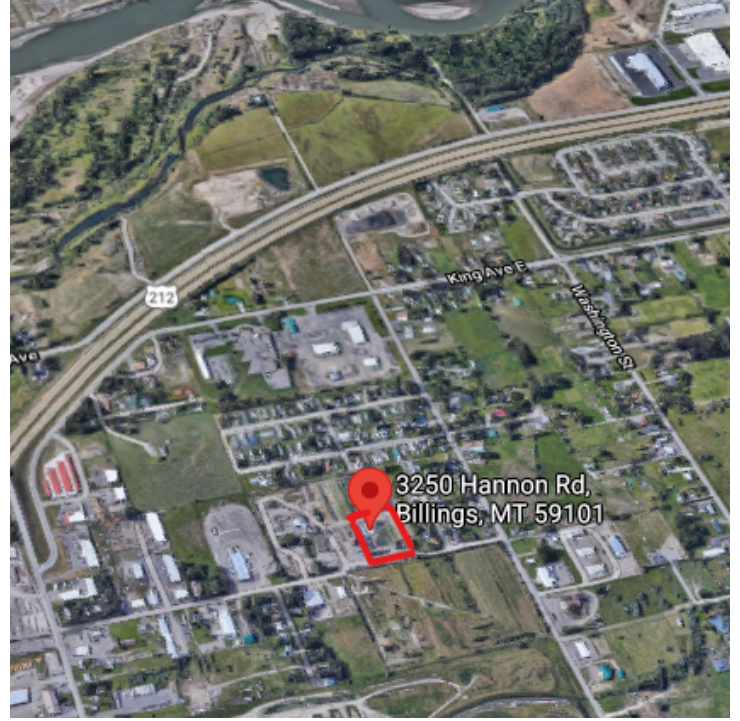
CBS



3250 HANNON ST

Billings, MT 59101

SALE



CBCWORLDWIDE.COM

Todd Sherman
406 656 2001
todd@cbcmontana.com

Shaylee Green
406 656 2001
shaylee@cbcmontana.com

 **COLDWELL
BANKER
COMMERCIAL**
CBS



3250 HANNON ST

Billings, MT 59101

SALE



Google

Map data ©2021 Imagery ©2021, Landsat / Copernicus, Maxar Technologies, USDA Farm Service Agency

CBCWORLDWIDE.COM

Todd Sherman
 406 656 2001
 todd@cbcmontana.com

Shaylee Green
 406 656 2001
 shaylee@cbcmontana.com



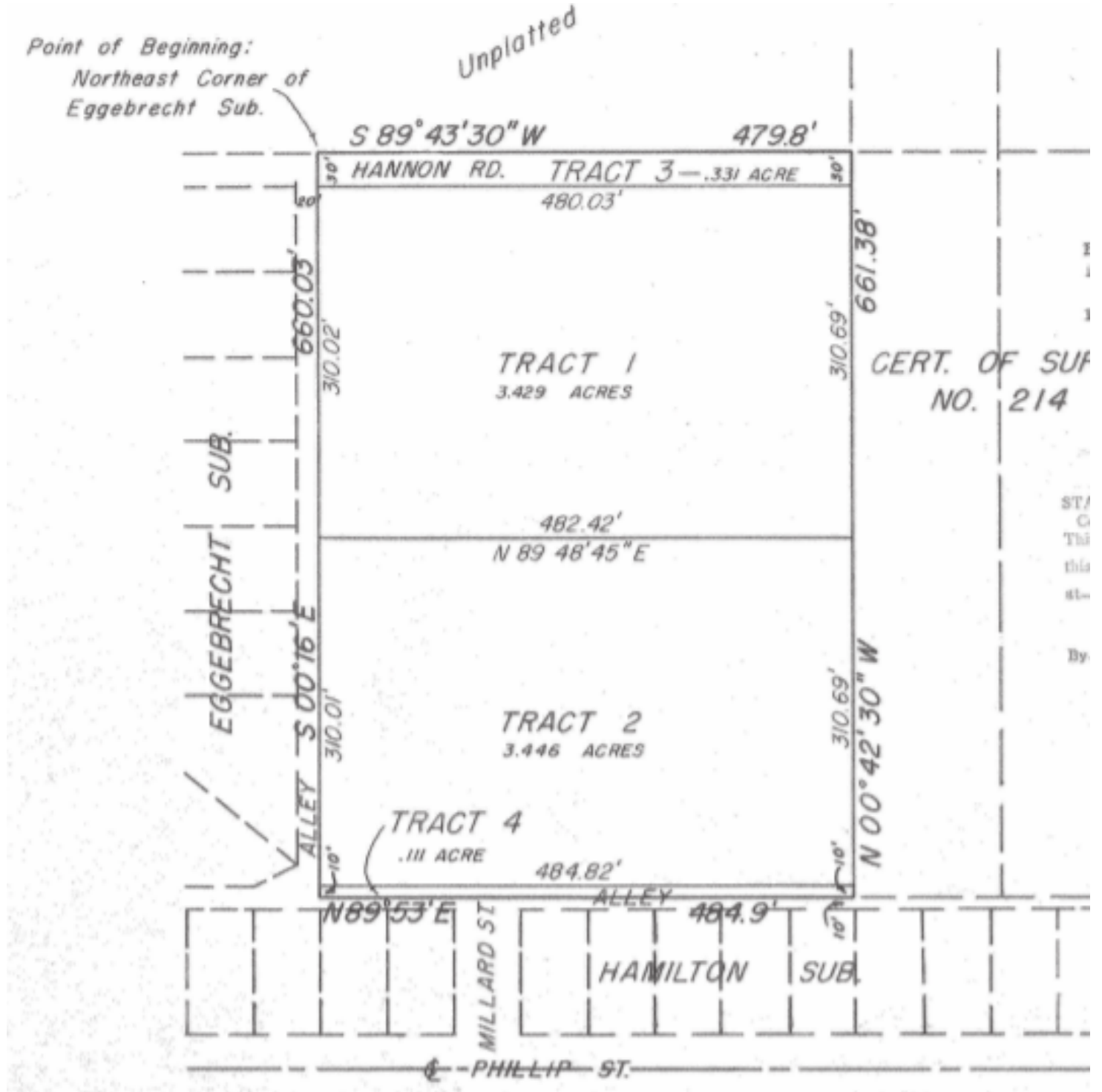
CBS



3250 HANNON ST

Billings, MT 59101

SALE



CBCWORLDWIDE.COM

Todd Sherman
406 656 2001
todd@cbcmontana.com

Shaylee Green
406 656 2001
shaylee@cbcmontana.com



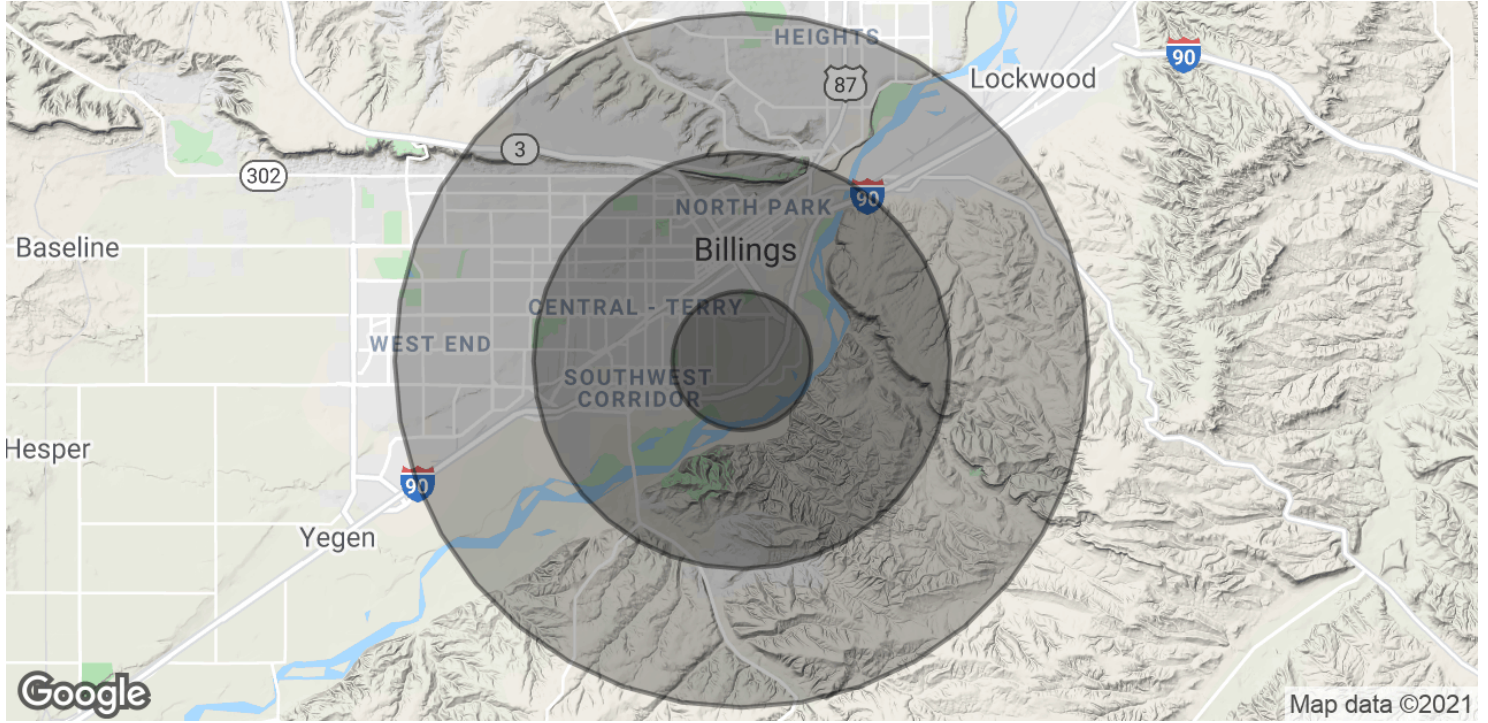
CBS



3250 HANNON ST

Billings, MT 59101

SALE



POPULATION	1 MILE	3 MILES	5 MILES
Total Population	6,240	38,106	86,062
Average age	32.9	34.0	35.3
Average age (Male)	33.9	33.6	33.9
Average age (Female)	32.6	34.6	37.6
HOUSEHOLDS & INCOME	1 MILE	3 MILES	5 MILES
Total households	2,213	16,313	36,953
# of persons per HH	2.8	2.3	2.3
Average HH income	\$43,010	\$43,363	\$51,453
Average house value	\$115,566	\$139,280	\$154,524

* Demographic data derived from 2010 US Census

CBCWORLDWIDE.COM

Todd Sherman
 406 656 2001
 todd@cbcmontana.com

Shaylee Green
 406 656 2001
 shaylee@cbcmontana.com



CBS



3250 HANNON ST

Billings, MT 59101

SALE



TODD SHERMAN

Comm Sales Associate

todd@cbcmontana.com

Direct: 406.656.2001 | Cell: 406.570.8961

MT #54530

PROFESSIONAL BACKGROUND

Todd Sherman is a Licensed Commercial Realtor in Billings, Montana for Coldwell Banker Commercial CBS. He has spent the last several years specializing in Sales, Leasing, and Commercial development. Todd works throughout the state finding suitable locations for National tenants, as well as working with Owners and Landlords listing all kinds of Commercial properties including; land, Industrial facilities, Hospitality, and Medical facilities. Since joining the Coldwell Banker Commercial team in 2018, Todd has been Rookie of the Year as well as Top Producer in 2020, with over \$8 Million in revenue. In 1988, Todd graduated from University Of Oregon with a Bachelor of Science in Business Communications. He spent the next 28 years managing title insurance companies in Oregon, Washington, and Montana. With his extensive industry related background, Todd has an extensive network of Real Estate Professionals and Affiliates throughout the region. Through this network, Todd is able to effectively connect Buyers and Tenants to Sellers and Landlords. Todd has been actively involved in trade and civic organizations such as The Big Sky Economic Development Corporation, Chamber of Commerce, Homebuilders Association, Association of REALTORS, Downtown Exchange Club, and East Billings Industrial Revitalization Board. Todd is passionate about what he does, and his enthusiasm for Commercial real estate becomes evident very quickly.

CBS

1215 24th Street Suite 240
Billings, MT 59102
406.656.2001

CBCWORLDWIDE.COM

Todd Sherman
406 656 2001
todd@cbcmontana.com

Shaylee Green
406 656 2001
shaylee@cbcmontana.com



COLDWELL
BANKER
COMMERCIAL

CBS



3250 HANNON ST

Billings, MT 59101

SALE



SHAYLEE GREEN

Comm Sales Associate

shaylee@cbcmontana.com

Direct: 406.656.2001 | Cell: 406.208.7723

PROFESSIONAL BACKGROUND

Shaylee grew up in Billings, MT and has spent most of her life taking advantage of the amazing outdoor activities Montana has to offer - camping, hiking, rock climbing, snowboarding and everything in between. Shaylee Studied Theology at Yellowstone Christian College right after high school and Completed an A.A. with a minor in Humanities. She then moved on to Study Elementary Education at MSU in Billings. She has 5 beautiful and very spunky children whom she tirelessly raises by herself while establishing her career in Real Estate. They are her pride and JOY! She has successfully completed multiple transactions and has extensive knowledge of investment grade properties. She exudes passion for small business owners because she comes from generations of hardworking farmers and ranchers and many extended family members are also self employed. Needless to say, its in her blood. She is a Nationally licensed Realtor and carries her Montana State license as well. She is also on track to achieve her brokers license 2021 through the number and complexity of transactions she has completed at Coldwell Banker Commercial. She has completed three courses in the 4 tier program to receive the Certified Commercial Investment Manager (CCIM) designation. She is on schedule to receive the third tier CCIM 103 soon. Shaylee joined Coldwell Banker Commercial after realizing that her true passion is commercial real estate. Because Shaylee does what she loves, she feels like she will never have to "work" another day in her life. She is proud to be the only female on the Coldwell Banker Commercial team in an advanced career field and wishes to pioneer the way for other women who want to make a huge, positive impact in their community.

EDUCATION

CCIM 101

CCIM 102

MEMBERSHIPS

Billings Association of Realtors

CBS

1215 24th Street Suite 240

Billings, MT 59102

406.656.2001

CBCWORLDWIDE.COM

Todd Sherman
406 656 2001
todd@cbcmontana.com

Shaylee Green
406 656 2001
shaylee@cbcmontana.com



CBS