



**COLDWELL
BANKER
COMMERCIAL**

CBS

FOR SALE

216 NORTHEAST MAIN STREET

Lewistown, MT 59457

AVAILABLE SPACE

6,945 SF

ASKING PRICE

\$450,000

AREA

Located on the main thoroughfare of Lewistown.

CBCMONTANA.COM



18 Unit Motel

Todd Sherman

O: 406 656 2001 | C: 406 570 8961

todd@cbcmontana.com

©2021 Coldwell Banker. All Rights Reserved. Coldwell Banker and the Coldwell Banker Commercial logos are trademarks of Coldwell Banker Real Estate LLC. The Coldwell Banker® System is comprised of company owned offices which are owned by a subsidiary of Realty Brokerage Group LLC and franchised offices which are independently owned and operated. The Coldwell Banker System fully supports the principles of the Equal Opportunity Act.

**COLDWELL BANKER COMMERCIAL
CBS**

1215 24th Street, Suite 240, Billings, MT 59102
406.656.2001



SALE

216 NORTHEAST MAIN STREET

Lewistown, MT 59457



OFFERING SUMMARY

Sale Price: \$450,000

Lot Size: 0.43 Acres

Building Size: 6,945 SF

Price / SF: \$64.79

PROPERTY OVERVIEW

Trail's End Motel

18 room motel in Central Montana

Has 2 Suites for on site management or owner operator dwellings

Group rating 7.7/10

Recently updated

CBCMONTANA.COM

Todd Sherman
O: 406 656 2001 | C: 406 570 8961
todd@cbcmontana.com



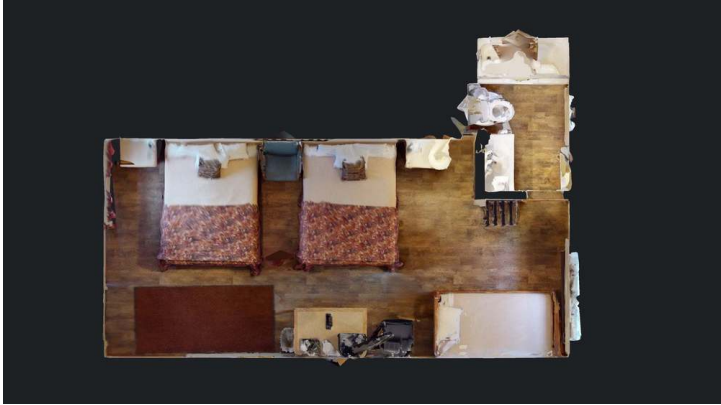
COLDWELL
BANKER
COMMERCIAL

CBS



ROOM 104

SALE



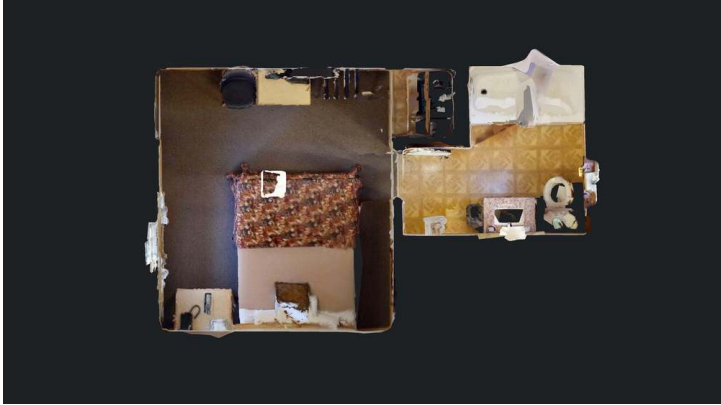
CBCMONTANA.COM

Todd Sherman
O: 406 656 2001 | C: 406 570 8961
todd@cbcmontana.com



ROOM 114

SALE



CBCMONTANA.COM

Todd Sherman
O: 406 656 2001 | C: 406 570 8961
todd@cbcmontana.com



ROOM 115

SALE



CBCMONTANA.COM

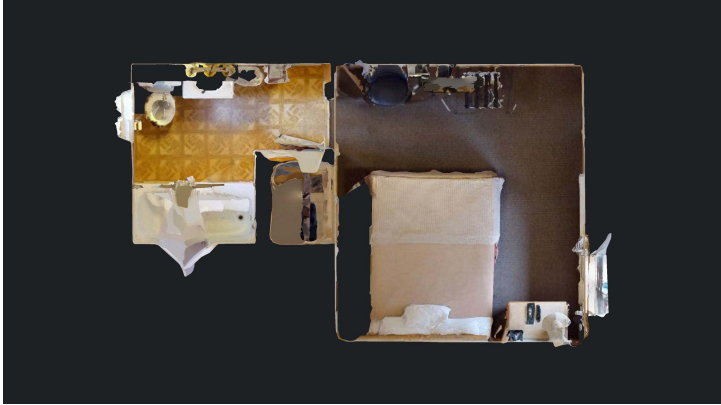
Todd Sherman
O: 406 656 2001 | C: 406 570 8961
todd@cbcmontana.com

 **COLDWELL
BANKER
COMMERCIAL**
CBS



ROOM 116

SALE



CBCMONTANA.COM

Todd Sherman
O: 406 656 2001 | C: 406 570 8961
todd@cbcmontana.com



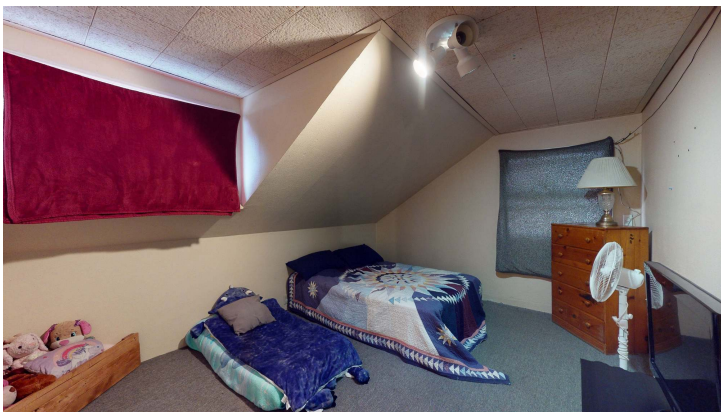
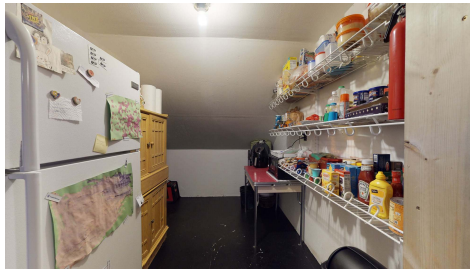
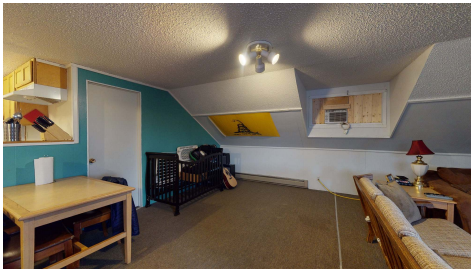
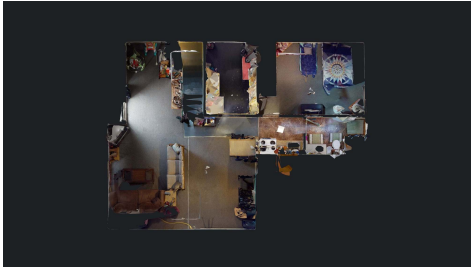
CBS



216 NORTHEAST MAIN STREET

Lewistown, MT 59457

SALE



CBCMONTANA.COM

Todd Sherman
O: 406 656 2001 | C: 406 570 8961
todd@cbcmontana.com



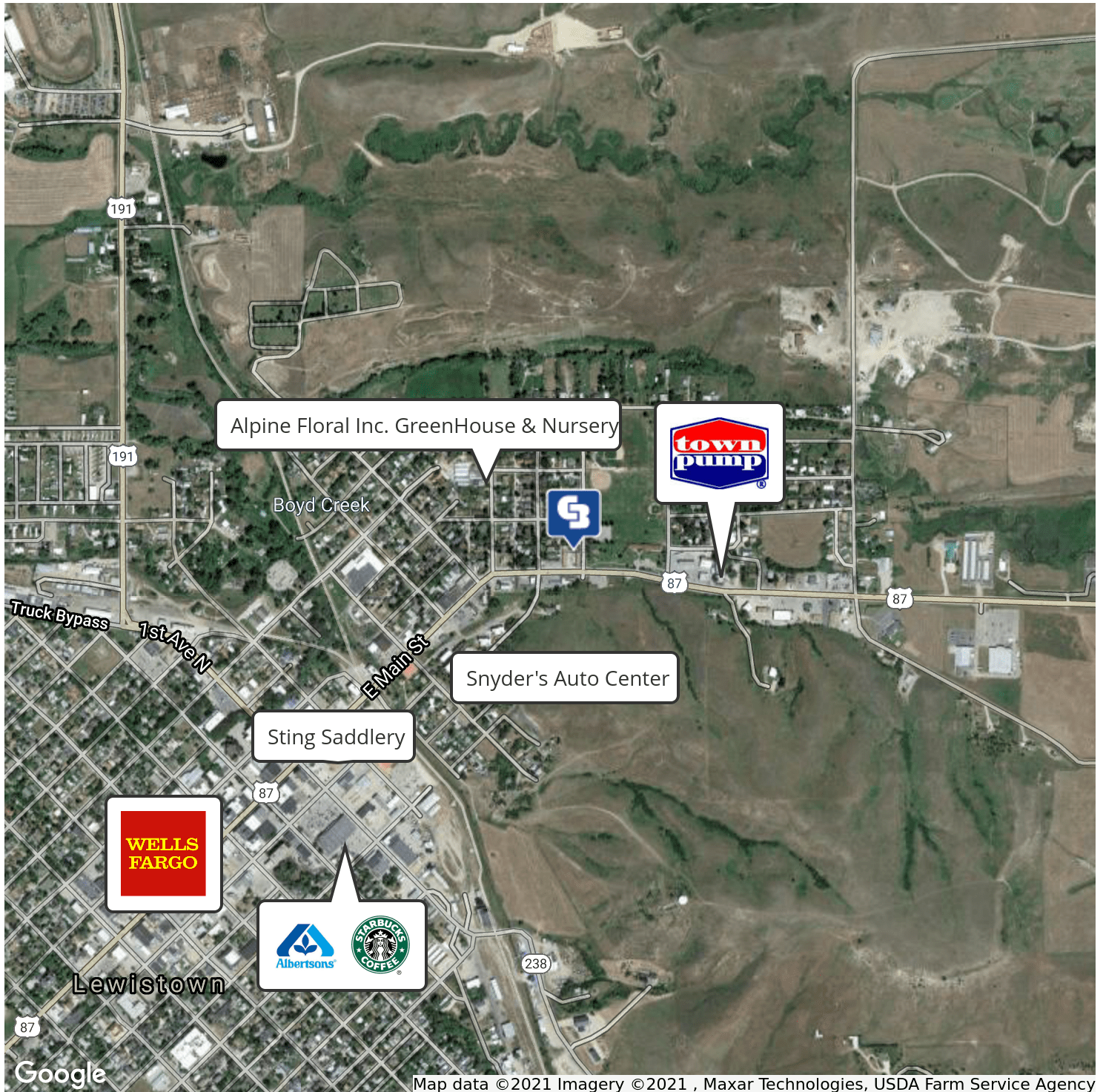
CBS



216 NORTHEAST MAIN STREET

Lewistown, MT 59457

SALE



CBCMONTANA.COM

Todd Sherman
 O: 406 656 2001 | C: 406 570 8961
 todd@cbcmontana.com



CBS