



**COLDWELL
BANKER
COMMERCIAL**

CBS

100 24TH ST W

Billings, MT 59102



FOR SALE

CBCMONTANA.COM

RETAIL

Nathan Matelich

Broker/Owner
406 781 6889
nathan@cbcmontana.com

David Mitchell

Principal | Broker
406 794 3404
d@cbcmontana.com

©2020 Coldwell Banker. All Rights Reserved. Coldwell Banker and the Coldwell Banker Commercial logos are trademarks of Coldwell Banker Real Estate LLC. The Coldwell Banker® System is comprised of company owned offices which are owned by a subsidiary of Realogy Brokerage Group LLC and franchised offices which are independently owned and operated. The Coldwell Banker System fully supports the principles of the Equal Opportunity Act.

**COLDWELL BANKER COMMERCIAL
CBS**

1215 24th Street, Suite 240, Billings, MT 59102
406.656.2001



100 24TH ST W

Billings, MT 59102

SALE



OFFERING SUMMARY

Sale Price:	\$3,750,000
Cap Rate:	7.48%
NOI:	\$280,346
Lot Size:	4.4 Acres
Year Built:	1983
Building Size:	37,314 SF
Zoning:	Community Commercial
Price / SF:	\$100.50

PROPERTY OVERVIEW

- 37,314 SF Retail Building
- 4.4 Acres of Land
- 100% Occupancy
- 7 Diversified Tenants
- +/- 192 Parking Spots
- Zoned Community Commercial
- Large Pylon Sign
- 30,000+ Cars Per Day (24th St W)
- 17,000+ Cars Per Day (Central)
- Long Term Anchor Tenants
- Net Operating Income = \$280,346

CBCMONTANA.COM

Nathan Matelich
 Broker/Owner
 406 781 6889
 nathan@cbcmontana.com

David Mitchell
 Principal | Broker
 406 794 3404
 d@cbcmontana.com



**COLDWELL
 BANKER
 COMMERCIAL**

CBS



100 24TH ST W

Billings, MT 59102

SALE



TENANT	SUITE	SPACE SIZE
Telos Fitness	Suite 7	6,000 SF
Diversity Dance Studio	Suite 6	6,000 SF
Black Diamond Casino	Suite 5	2,208 SF
Chuck E Cheese	Suite 4	10,560 SF
One Source Lighting	Suite 3	4,428 SF
State Liquor Store	Suite 2	6,068 SF
Express Prints	Suite 1	2,050 SF
7 SUITES		37,314 SF

CBCMONTANA.COM

Nathan Matelich
 Broker/Owner
 406 781 6889
 nathan@cbcmontana.com

David Mitchell
 Principal | Broker
 406 794 3404
 d@cbcmontana.com



COLDWELL BANKER COMMERCIAL

CBS



100 24TH ST W

Billings, MT 59102

SALE



CBCMONTANA.COM

Nathan Matelich
Broker/Owner
406 781 6889
nathan@cbcmontana.com

David Mitchell
Principal | Broker
406 794 3404
d@cbcmontana.com



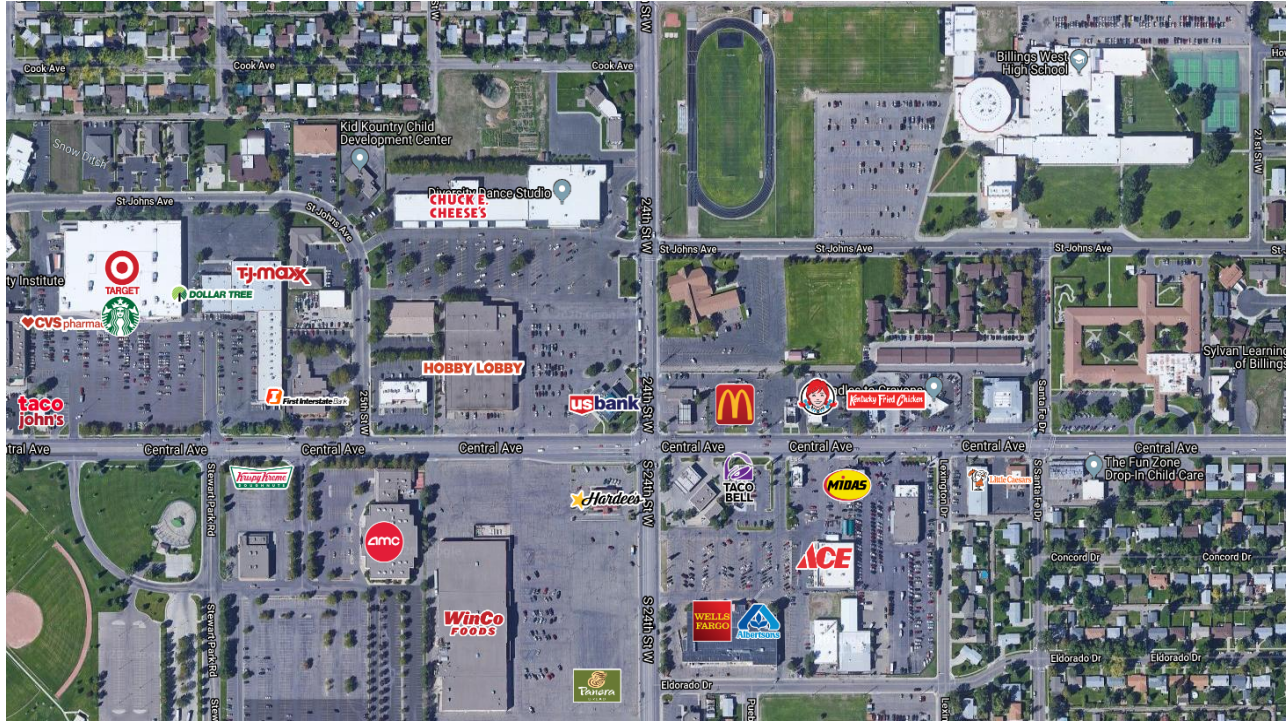
**COLDWELL
BANKER
COMMERCIAL**

CBS



LOCATION OVERVIEW

SALE



24th and Central intersection is a critical retail corner for the largest city in Montana. 30k+ cars per day heading north/south, and over 17k+ cars per day heading east/west, make this one of the busiest, not just in Billings, but the entire state. Demographically, this intersection is positioned with over 105,000 people, a median household income above \$85,000, and nearly 45,000 houses, all within a 5-mile radius. Within several blocks are major retailers including Winco, Target, Albertsons, US Bank, Hobby Lobby, McDonald's, Wendy's, and the Rimrock Mall.

The site has one traffic light off 24th Street at St Johns Ave. Access to the property is available on Central Ave, 25th St W, and 24th St W. In total there are 8 ingress/egress points. To the south of the property is Hobby Lobby and US Bank.

CBCMONTANA.COM

Nathan Matelich
Broker/Owner
406 781 6889
nathan@cbcmontana.com

David Mitchell
Principal | Broker
406 794 3404
d@cbcmontana.com



**COLDWELL
BANKER
COMMERCIAL**

CBS



STATE OF MONTANA LOCATION MAP



CBCMONTANA.COM

Nathan Matelich
Broker/Owner
406 781 6889
nathan@cbcmontana.com

David Mitchell
Principal | Broker
406 794 3404
d@cbcmontana.com



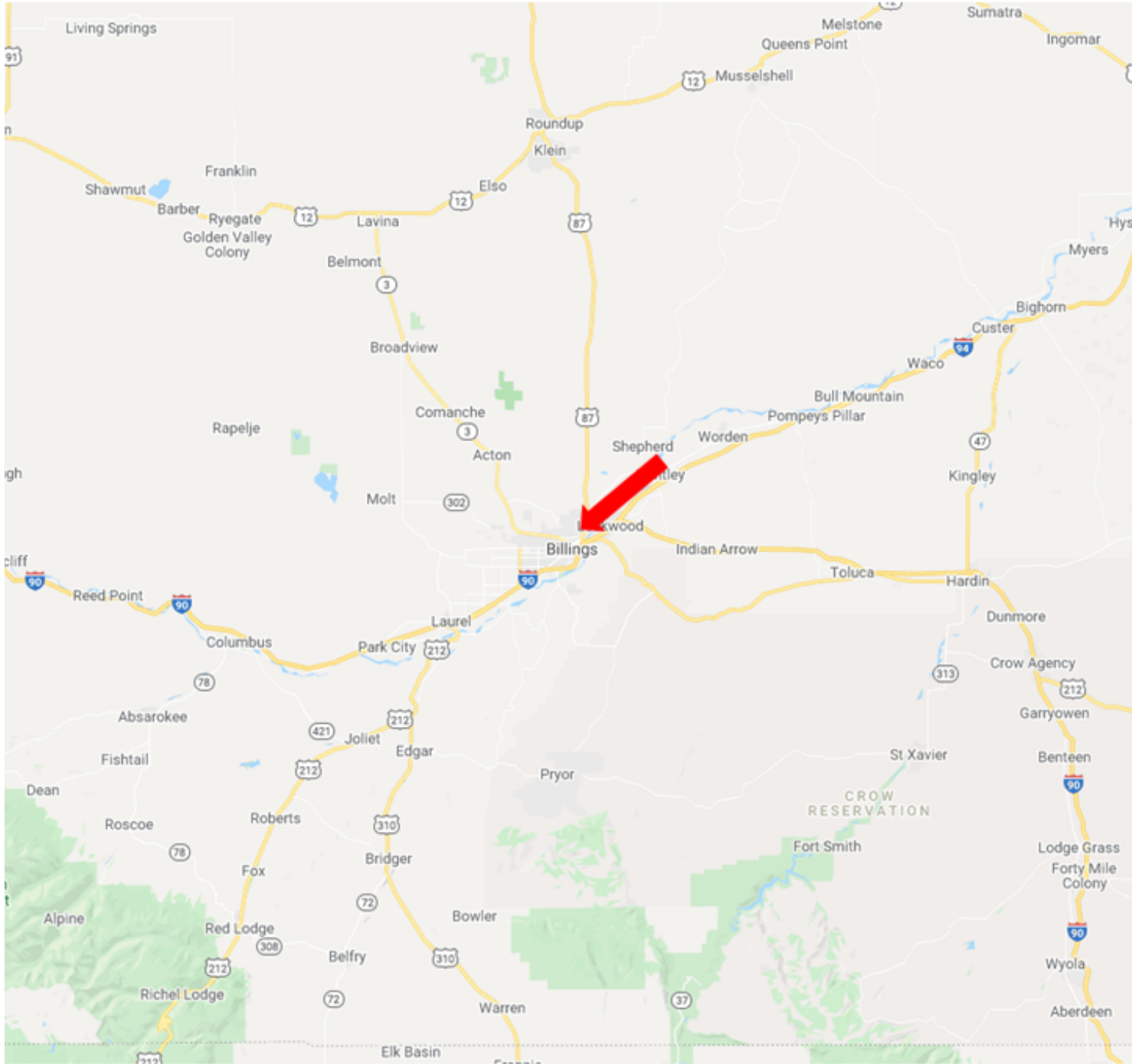
**COLDWELL
BANKER
COMMERCIAL**

CBS



REGIONAL LOCATION MAP

SALE



CBCMONTANA.COM

Nathan Matelich
Broker/Owner
406 781 6889
nathan@cbcmontana.com

David Mitchell
Principal | Broker
406 794 3404
d@cbcmontana.com



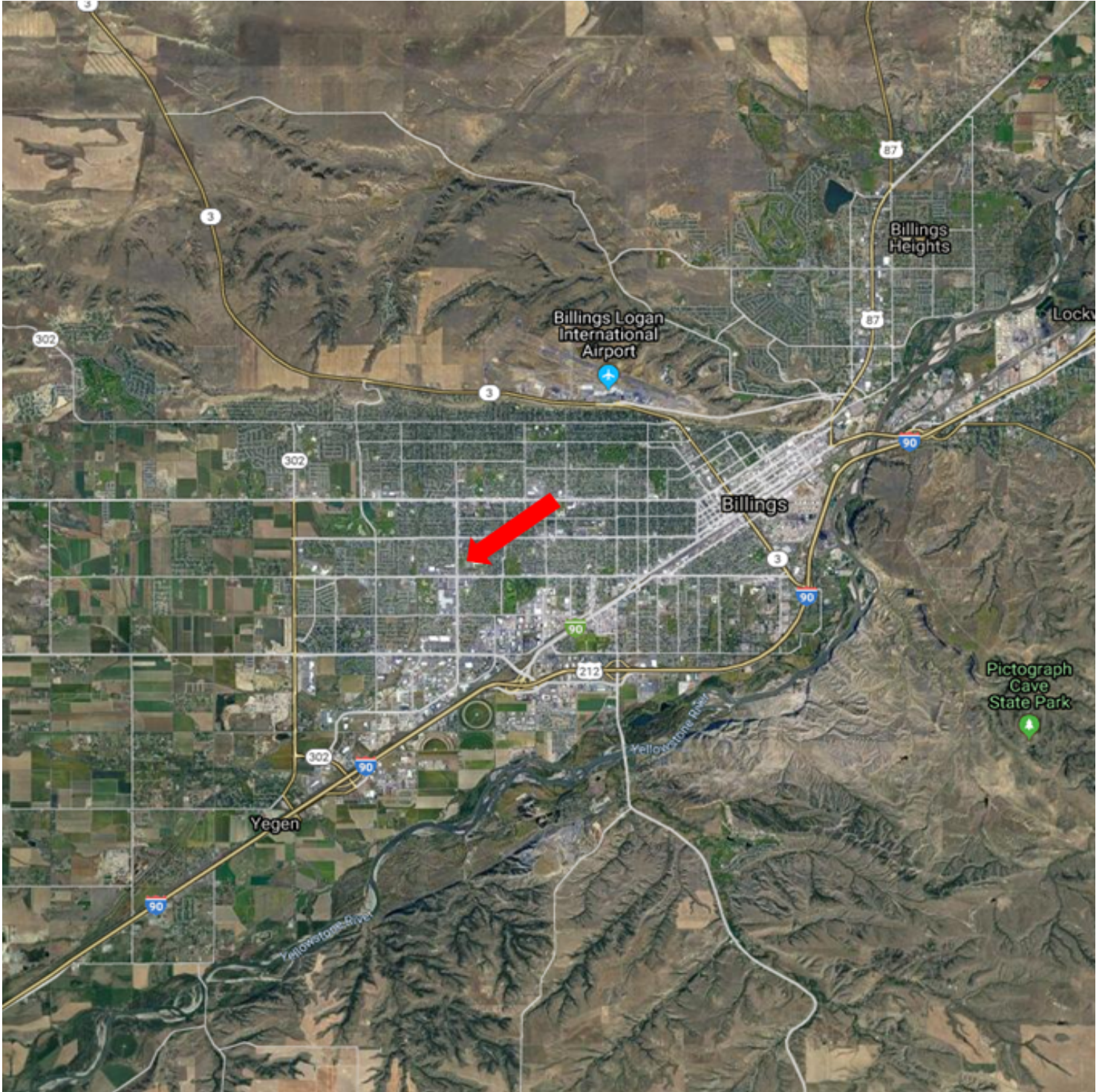
**COLDWELL
BANKER
COMMERCIAL**

CBS



CITY OF BILLINGS LOCATION MAP

SALE



CBCMONTANA.COM

Nathan Matelich
Broker/Owner
406 781 6889
nathan@cbcmontana.com

David Mitchell
Principal | Broker
406 794 3404
d@cbcmontana.com



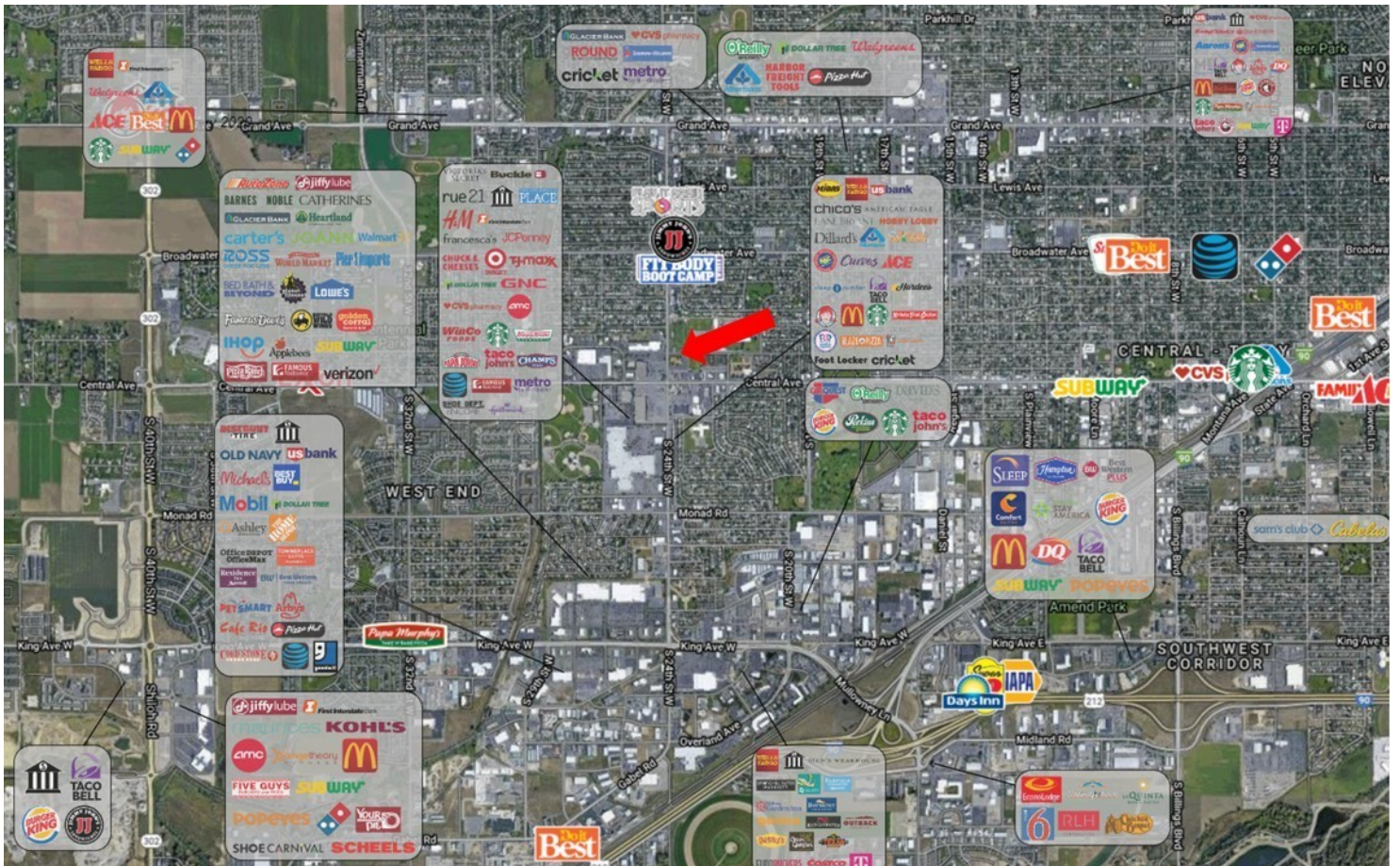
**COLDWELL
BANKER
COMMERCIAL**

CBS



TRADE AREA

SALE



CBCMONTANA.COM

Nathan Matelich
Broker/Owner
406 781 6889
nathan@cbcmontana.com

David Mitchell
Principal | Broker
406 794 3404
d@cbcmontana.com



COLDWELL BANKER COMMERCIAL

CBS



NEIGHBORHOOD AERIAL

SALE



CBCMONTANA.COM

Nathan Matelich
Broker/Owner
406 781 6889
nathan@cbcmontana.com

David Mitchell
Principal | Broker
406 794 3404
d@cbcmontana.com



**COLDWELL
BANKER
COMMERCIAL**

CBS



SITE AERIAL

SALE



CBCMONTANA.COM

Nathan Matelich
 Broker/Owner
 406 781 6889
 nathan@cbcmontana.com

David Mitchell
 Principal | Broker
 406 794 3404
 d@cbcmontana.com



COLDWELL BANKER COMMERCIAL

CBS



BILLINGS MARKET

SALE

CITY OF BILLINGS

Billings is not only the largest city in Montana, it is the largest city within 500 miles, making it the logical hub in the northern Montana region and western Canada. Home to Montana State University - Billings and Rocky Mountain College, approximately 7,000 highly educated students enter the Billings economy each year. Additionally, Billings is Montana's trail head to Little Big Horn Battlefield, Pompey's Pillar National Monument, the Dinosaur Trail, Yellowstone National Park and much more. Within Billings, you will find worldwide cuisine, shopping unique to "Montana's style," attractions that are second to none when it comes to the true west, and arts and events that attract all interests. From financial services to world-class healthcare and consumer product manufacturing to steel production, the region's diverse economy provides the stability for a vibrant community. There are 158,980 residents in Yellowstone County and 110,323 in the city of Billings. From 2010-2017, population of Yellowstone County increased by 7.4%. Median household income is \$58,058 and average home price is \$235,950.

ECONOMY

The Billings area is a major financial, medical, wholesale and retail center. Agricultural products, natural resources, health care, retail, wholesale trade and tourism have contributed to area growth. Billings avoided the effects of the past recession, and the economy has remained strong with construction and housing start up as well as large investments in the community by national companies and major new road construction projects. There are 5,614 employer establishments and unemployment rate in Yellowstone County is 3.7%.

NATIONAL RECOGNITION

Billings has been recognized for a number of reasons by national publications including but not limited to: #2 in job satisfaction (Gallup's Best and Worst Cities for Well-Being), Best Small Places for Business and Careers (Forbes), Most Sustainable Towns in the West (Sunset Magazine), and America's Best Town (Outside Magazine).

CBCMONTANA.COM

Nathan Matelich
Broker/Owner
406 781 6889
nathan@cbcmontana.com

David Mitchell
Principal | Broker
406 794 3404
d@cbcmontana.com



**COLDWELL
BANKER
COMMERCIAL**

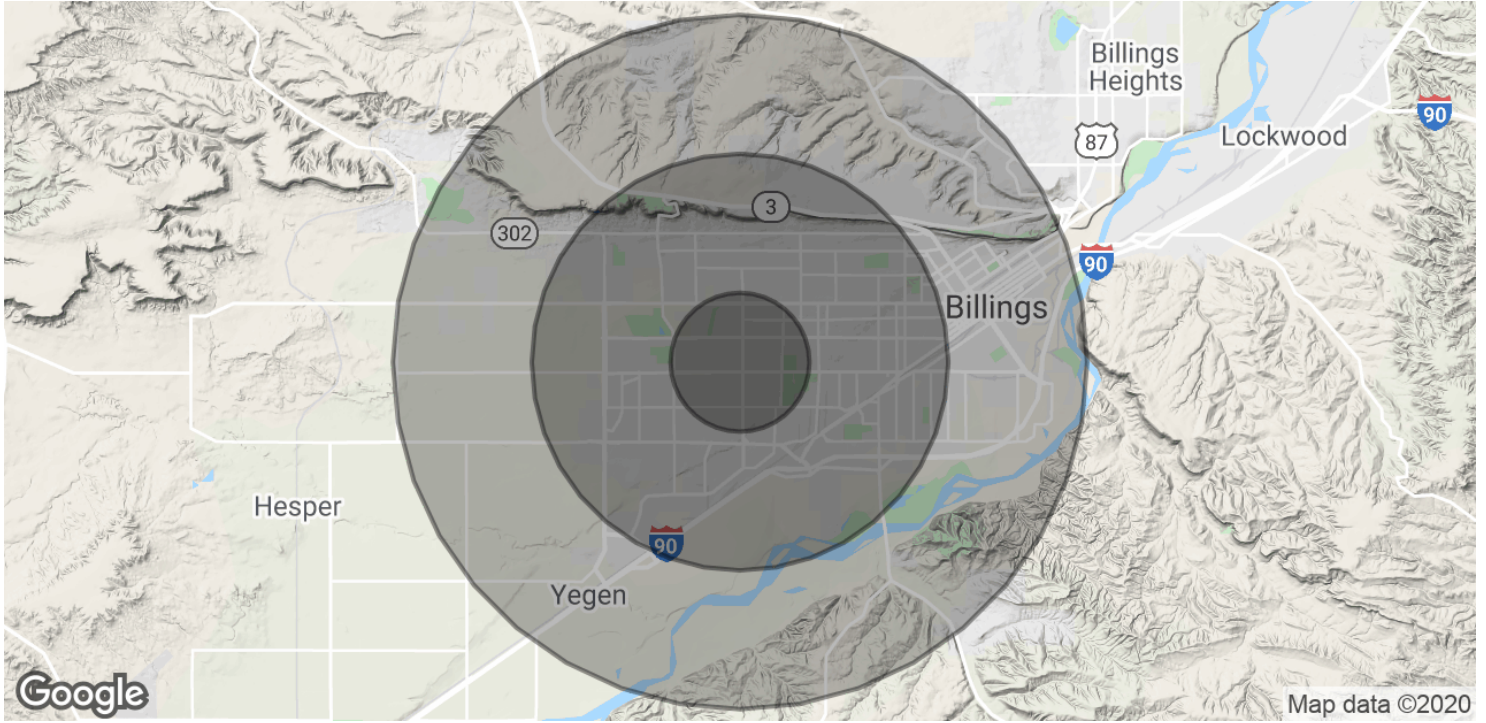
CBS



100 24TH ST W

Billings, MT 59102

SALE



POPULATION	1 MILE	3 MILES	5 MILES
Total Population	7,557	55,406	98,414
Average age	35.6	34.5	35.7
Average age (Male)	35.3	33.4	34.3
Average age (Female)	35.0	36.4	37.8
HOUSEHOLDS & INCOME	1 MILE	3 MILES	5 MILES
Total households	3,364	23,611	41,685
# of persons per HH	2.2	2.3	2.4
Average HH income	\$35,903	\$49,914	\$53,343
Average house value	\$168,160	\$148,445	\$158,966

* Demographic data derived from 2010 US Census

CBCMONTANA.COM

Nathan Matelich
 Broker/Owner
 406 781 6889
 nathan@cbcmontana.com

David Mitchell
 Principal | Broker
 406 794 3404
 d@cbcmontana.com



COLDWELL BANKER COMMERCIAL

CBS