



**COLDWELL
BANKER
COMMERCIAL**

CBS

FOR SALE

501 N 22ND ST

Billings, MT 59101

AVAILABLE SPACE

12,198 SF

ASKING PRICE

\$700,000

AREA

501 N 22nd St is located just east of downtown Billings and ideal for any business looking to serve all areas of Billings. With the high sidewalls, fire suppression system, access to rail and a loading dock, this 12,000 SF warehouse property has it all. While this warehouse is currently being used as cold storage, a buyer could easily bring in a MDU natural gas line and add heat. This building is ideal for most distribution, warehousing, manufacturing or service companies.



CBCMONTANA.COM

OFFICE

Nathan Matelich

406.781.6889

nathan@cbcmontana.com

Todd Sherman

406.570.8961

todd@cbcmontana.com

©2019 Coldwell Banker Real Estate LLC, dba Coldwell Banker Commercial CBS. All rights reserved. Coldwell Banker Commercial® and the Coldwell Banker Commercial logo are registered service marks owned by Coldwell Banker Real Estate LLC. Coldwell Banker Real Estate LLC, dba Coldwell Banker Commercial Affiliates fully supports the principles of the Fair Housing Act and the Equal Opportunity Act. Each office is independently owned and operated. The information provided is deemed reliable, but it is not guaranteed to be accurate or complete, and it should not be relied upon as such. This information should be independently verified before any person enters into a transaction based upon it.

**COLDWELL BANKER COMMERCIAL
CBS**

1215 24th Street, Suite 240, Billings, MT 59102
406.656.2001



501 N 22ND ST

Billings, MT 59101

SALE



OFFERING SUMMARY

Sale Price:	\$700,000
Lot Size:	0.63 Acres
Year Built:	1978
Building Size:	12,198 SF
Renovated:	1997
Zoning:	East Billings Railspur Village
Price / SF:	\$57.39

PROPERTY OVERVIEW

- *12,198 SF Warehouse For Sale \$700,000
- *27,513 SF of Land
- *18-22 ft Sidewalls
- *Rail Spur Servicing the Warehouse
- *Loading Dock with Leveler
- *2 qty Drive in Overhead Doors
- *Fire Suppression System
- *Fenced Parking Lot & Yard Space
- *East Billings Railspur Village Zoning
- *Built in 1978, Remodeled & Expanded in 1997

CBCMONTANA.COM

Nathan Matelich
406.781.6889
nathan@cbcmontana.com

Todd Sherman
406.570.8961
todd@cbcmontana.com



**COLDWELL
BANKER
COMMERCIAL**

CBS



501 N 22ND ST
Billings, MT 59101

SALE



CBCMONTANA.COM

Nathan Matelich
406.781.6889
nathan@cbcmontana.com

Todd Sherman
406.570.8961
todd@cbcmontana.com



**COLDWELL
BANKER
COMMERCIAL**

CBS



501 N 22ND ST
Billings, MT 59101

SALE



CBCMONTANA.COM

Nathan Matelich
406.781.6889
nathan@cbcmontana.com

Todd Sherman
406.570.8961
todd@cbcmontana.com



**COLDWELL
BANKER
COMMERCIAL**

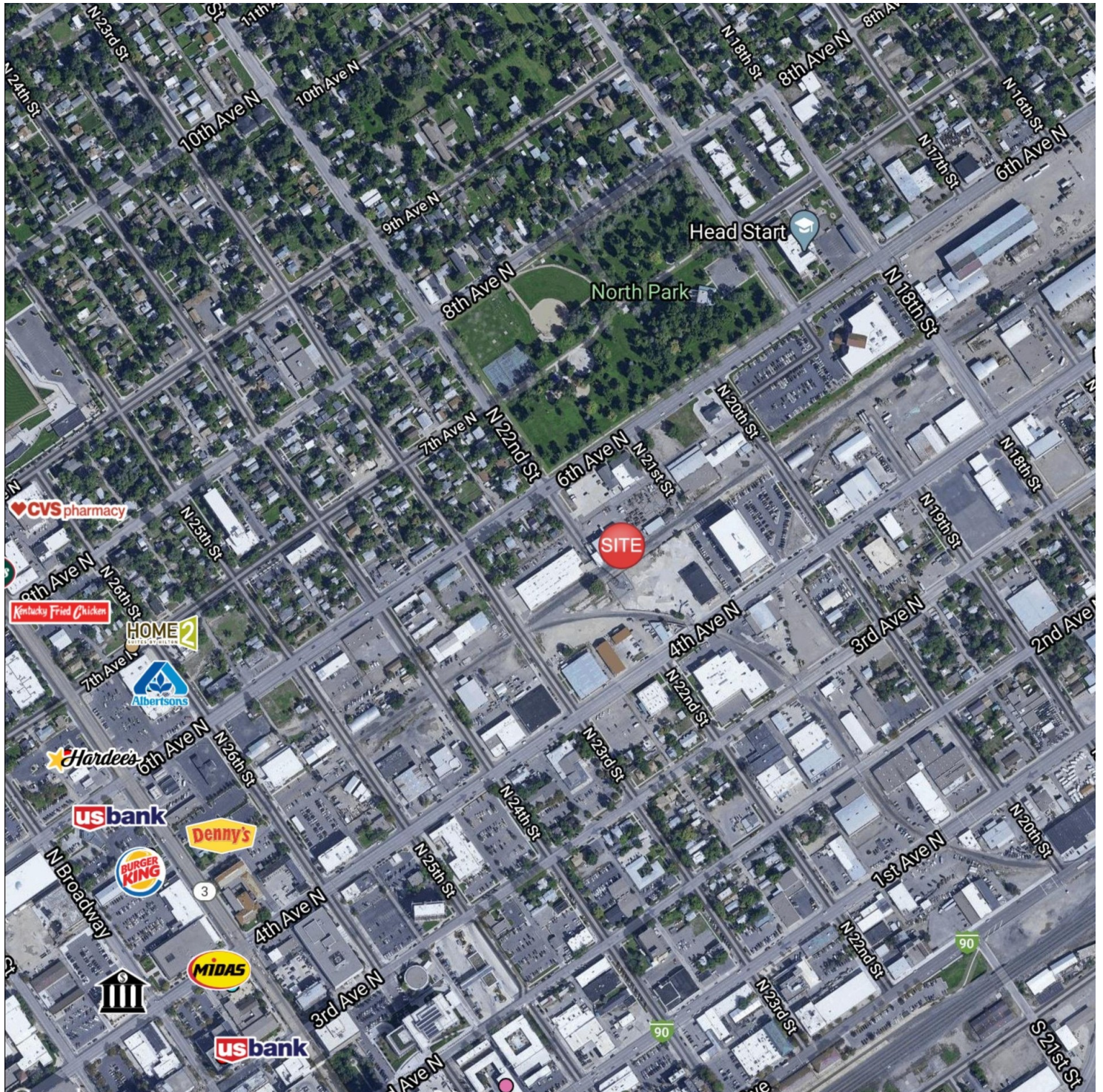
CBS



501 N 22ND ST

Billings, MT 59101

SALE



CBCMONTANA.COM

Nathan Matelich
406.781.6889
nathan@cbcmontana.com

Todd Sherman
406.570.8961
todd@cbcmontana.com



**COLDWELL
BANKER
COMMERCIAL**

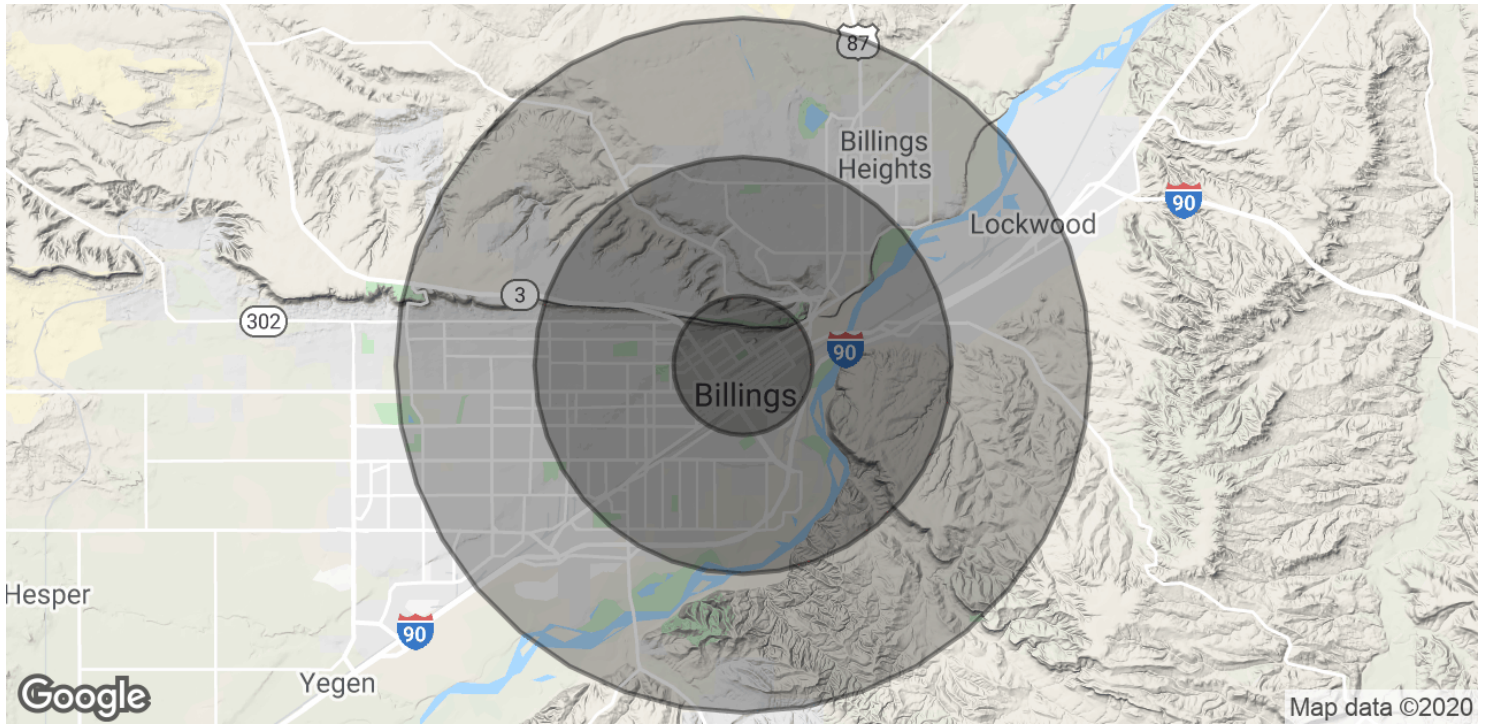
CBS



501 N 22ND ST

Billings, MT 59101

SALE



POPULATION	1 MILE	3 MILES	5 MILES
Total Population	7,097	57,400	99,590
Median age	35.9	34.8	35.8
Median age (Male)	35.6	33.6	34.3
Median age (Female)	35.8	36.6	37.8
HOUSEHOLDS & INCOME	1 MILE	3 MILES	5 MILES
Total households	3,255	24,383	42,075
# of persons per HH	2.2	2.4	2.4
Average HH income	\$37,729	\$50,474	\$53,757
Average house value	\$187,138	\$151,365	\$160,540

* Demographic data derived from 2010 US Census

CBCMONTANA.COM

Nathan Matelich
 406.781.6889
 nathan@cbcmontana.com

Todd Sherman
 406.570.8961
 todd@cbcmontana.com



**COLDWELL
 BANKER
 COMMERCIAL**

CBS