



**COLDWELL
BANKER
COMMERCIAL**
CBS

FOR LEASE

51 N 15TH ST

Billings, MT 59101

AVAILABLE SPACE

1,230 - 2,490 SF

LEASE RATE

\$1,392 - \$2,818 per month (+ utilities)

AREA

51 N 15th St is a recently renovated Class A office complex with high end wood finishes, easy parking and quick access to downtown. It consists of 2 separate office spaces that can be leased separately or enjoy a connecting doorway between suites. Other tenants currently include law, medical, construction, agriculture & financial management, photography & real estate businesses. Enjoy the courtyard with water feature & Koi pond on your lunch break! Office complex is a tight knit community with property manager onsite.



OFFICE

Nathan Matelich

406.781.6889

nathan@cbcmontana.com

©2019 Coldwell Banker Real Estate LLC, dba Coldwell Banker Commercial CBS. All rights reserved. Coldwell Banker Commercial® and the Coldwell Banker Commercial logo are registered service marks owned by Coldwell Banker Real Estate LLC. Coldwell Banker Real Estate LLC, dba Coldwell Banker Commercial Affiliates fully supports the principles of the Fair Housing Act and the Equal Opportunity Act. Each office is independently owned and operated. The information provided is deemed reliable, but it is not guaranteed to be accurate or complete, and it should not be relied upon as such. This information should be independently verified before any person enters into a transaction based upon it.

**COLDWELL BANKER COMMERCIAL
CBS**

1215 24th Street, Suite 240, Billings, MT 59102
406.656.2001

CBCMONTANA.COM



51 N 15TH ST

Billings, MT 59101

LEASE



OFFERING SUMMARY

Available SF: 1,230 - 2,490 SF

Lease Rate: \$1,392 - \$2,818 per month (+ utilities)

Lot Size: 4.87 Acres

Building Size: 2,490 SF

Renovated: 2012

PROPERTY OVERVIEW

1,230 - 2,490 SF Class A Office Spaces (Can be leased together or separately)
Newly Remodeled in 2012
Easy Parking
Private Restroom (Each suite)
Individual Office Thermostats
Access off Courtyard w/ Water Feature & Koi Pond
Centrally Located & Quick Access to Downtown

SUITE 1:
*\$1,392.25/mo + utilities
*1,230 SF Office
*2-3 Offices
*Conference Room
*Lobby/Cubicle Area
*Kitchenette

SUITE 2:
*\$1,425.58/mo + utilities
*1,260 SF Office
*2-3 Offices
*Conference Room
*Lobby/Cubicle Area
*Kitchenette

CBCMONTANA.COM

Nathan Matelich
406.781.6889
nathan@cbcmontana.com



**COLDWELL
BANKER
COMMERCIAL**

CBS



51 N 15TH ST
 Billings, MT 59101

LEASE



CBCMONTANA.COM

Nathan Matelich
 406.781.6889
 nathan@cbcmontana.com



**COLDWELL
 BANKER
 COMMERCIAL**

CBS



51 N 15TH ST
Billings, MT 59101

LEASE



CBCMONTANA.COM

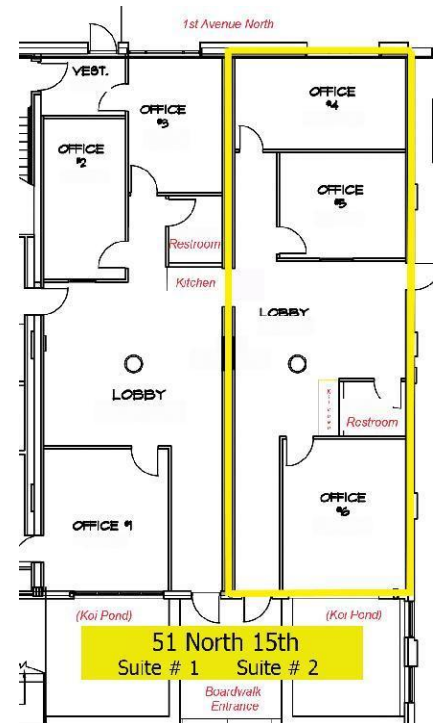
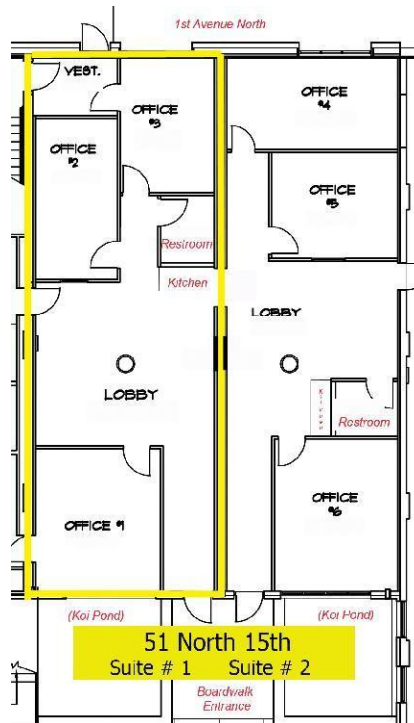
Nathan Matelich
406.781.6889
nathan@cbcmontana.com

 **COLDWELL
BANKER
COMMERCIAL**
CBS



51 N 15TH ST
Billings, MT 59101

LEASE



CBCMONTANA.COM

Nathan Matelich
406.781.6889
nathan@cbcmontana.com

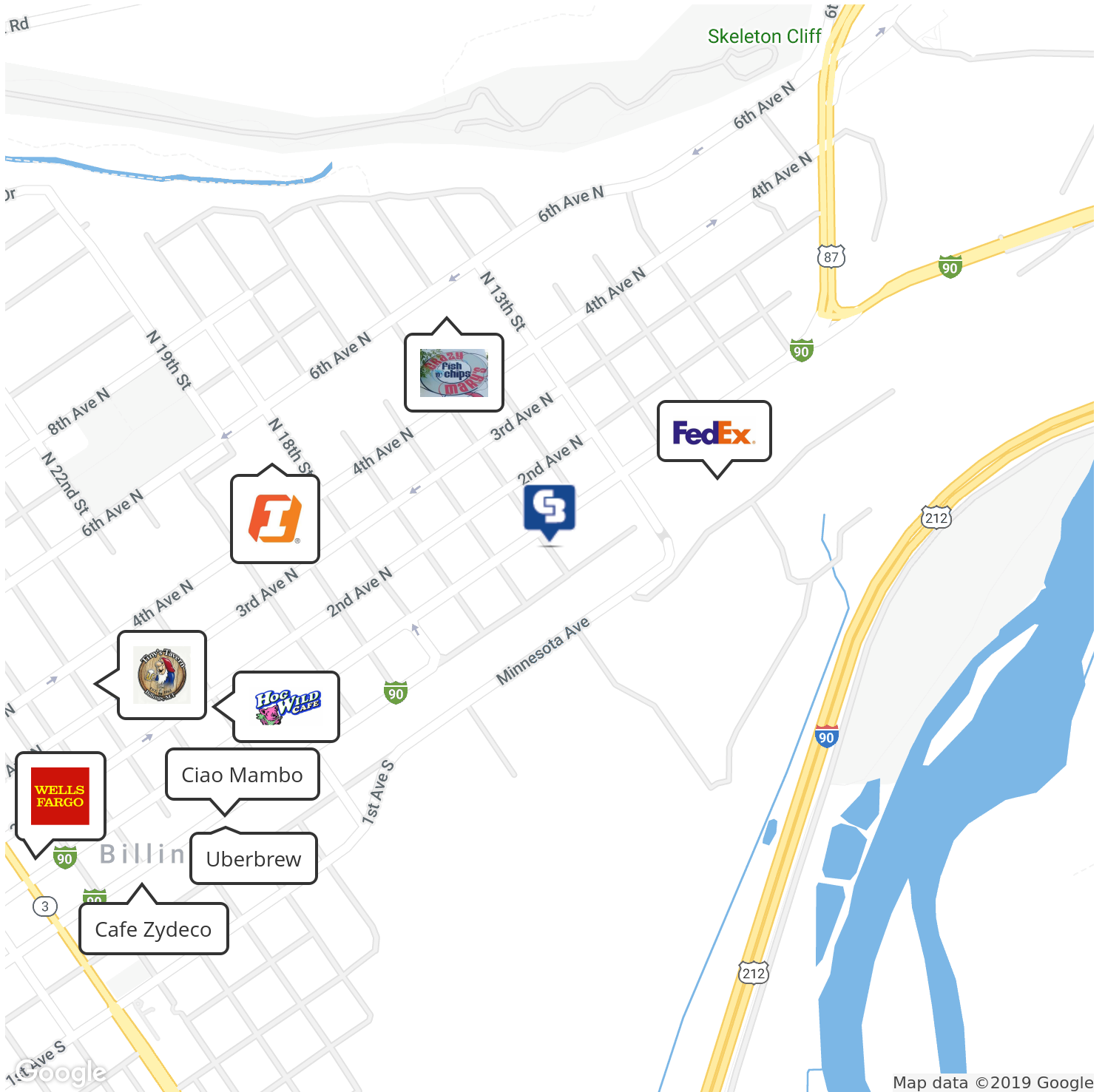




51 N 15TH ST

Billings, MT 59101

LEASE



CBCMONTANA.COM

Nathan Matelich
 406.781.6889
 nathan@cbcmontana.com



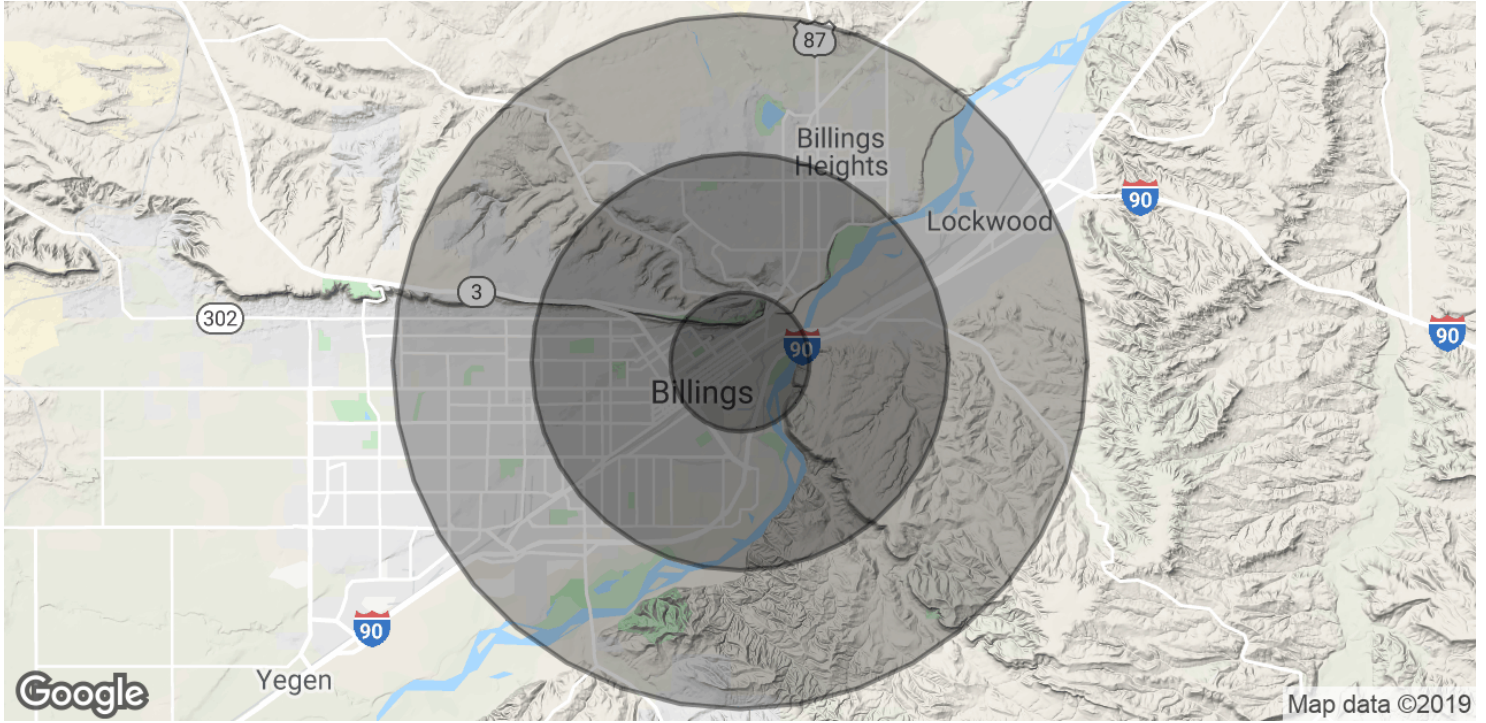
**COLDWELL
 BANKER
 COMMERCIAL**
 CBS



51 N 15TH ST

Billings, MT 59101

LEASE



POPULATION	1 MILE	3 MILES	5 MILES
Total Population	5,965	49,516	92,133
Median age	35.4	35.0	35.1
Median age (Male)	35.8	34.0	33.6
Median age (Female)	33.7	36.1	37.3
HOUSEHOLDS & INCOME	1 MILE	3 MILES	5 MILES
Total households	2,575	20,871	38,709
# of persons per HH	2.3	2.4	2.4
Average HH income	\$35,968	\$49,970	\$52,766
Average house value	\$112,340	\$147,379	\$155,882

* Demographic data derived from 2010 US Census

CBCMONTANA.COM

Nathan Matelich
 406.781.6889
 nathan@cbcmontana.com

