

# THE MONTANA SAPPHIRE

\$7.00 - \$9.50 / SF

## FEATURES

- \$7.00 to \$9.50 PSF
- City Services
- Prime Retail, Office & Medical Location
- The Montana Sapphire offers housing, retail, services, and restaurants all within the 65-acre development.
- Adjacent to the Crossings Lifestyle Center & 122 acre St Vincent Medical Campus



## Land

Blaine Poppler  
406 671 0399  
blaine@cbcmontana.com  
George Warmer, CCIM  
406 855 8946  
george@cbcmontana.com



# THE MONTANA SAPPHIRE

Billings, MT 59106

SALE



## OFFERING SUMMARY

Sale Price: \$7.00 - \$9.50 / SF

Zoning: Entryway Light Industrial & Highway Commercial

Services: City Water, Sewer and Storm Drain

CBCMONTANA.COM

Blaine Poppler  
406 671 0399  
blaine@cbcmontana.com

George Warmer, CCIM  
406 855 8946  
george@cbcmontana.com

## PROPERTY OVERVIEW

Lot 2 is a 1.688-acre site located on the western boundary of the Montana Sapphire. Lot is accessible to King Ave West from Montana Sapphire Dr. Priced at \$7.00 SF

Lot 8A offers 2.489 acres with views of the Shiloh Conservation Park and visibility to Shiloh Road traffic. Ideal retail site. The property is zoned Entryway Light Industrial. Priced at \$9.50 SF



CBS

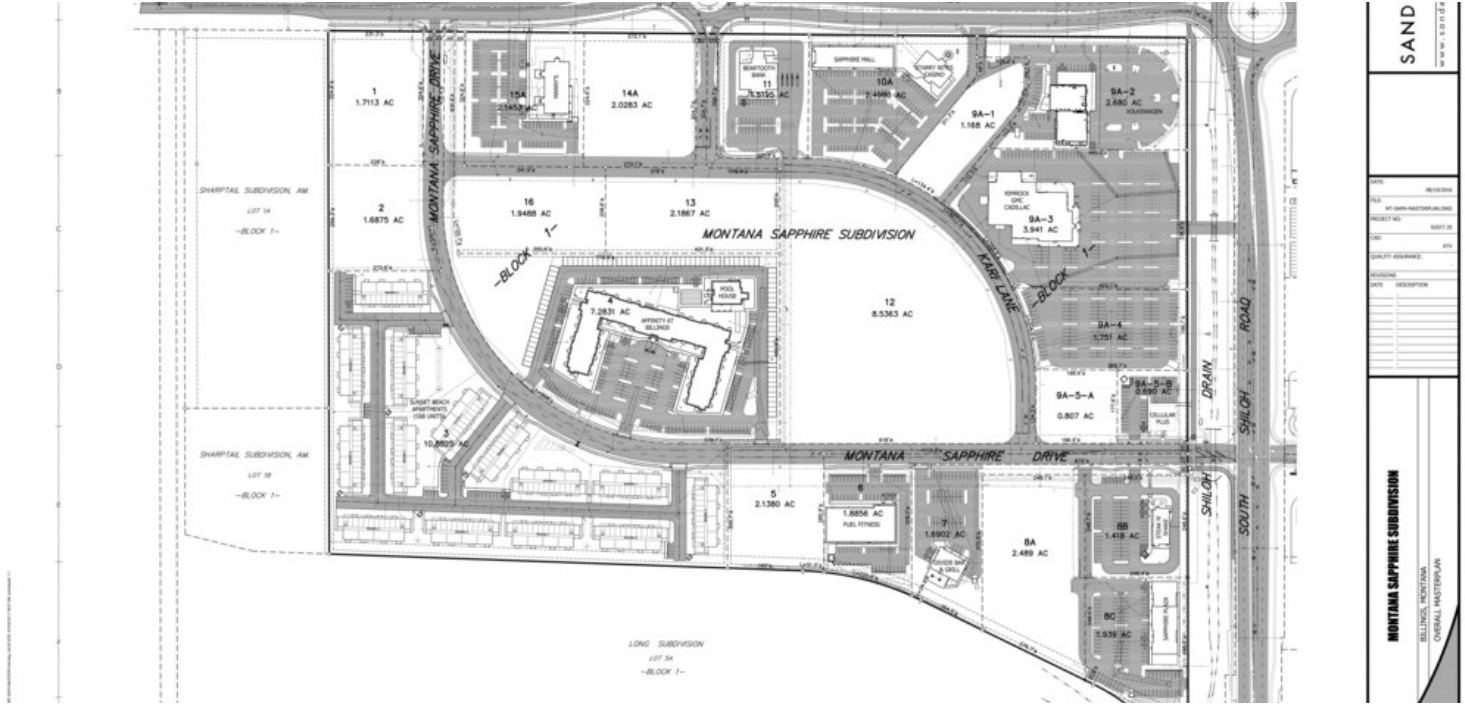


# THE MONTANA SAPPHIRE

Billings, MT 59106

# SALE

# OF LOTS | 2    TOTAL LOT SIZE | 1.688Acres - 2.138 Acres    TOTAL LOT PRICE | \$7.0 - \$9.50 / SF    BEST USE | Retail, Office, Medical



STATUS	LOT #	ADDRESS	TAX ID	SUB-TYPE	SIZE	PRICE	ZONING
Available	2	4320 King Ave West	C13955	Retail	1.688 Acres	\$7.00 / SF	Entryway Light Industrial
Available	5	880 Shiloh Road	C13958	Retail	2.138 Acres	\$7.00 / SF	Entryway Light Industrial
Available	8A	4016 Montana Sapphire Dr	C13961	Retail	2.489 Acres	\$9.50 / SF	Entryway Light Industrial
Available	13	4200 King Ave W	C13966	Retail	2.187 Acres	\$8.00 / SF	Entryway Light Industrial
Available	14A	4220 King Ave W	C13967	Retail	2.028 Acres	\$14.00 / SF	Entryway Light Industrial

CBCMONTANA.COM

Blaine Poppler  
 406 671 0399  
 blaine@cbcmontana.com

George Warmer, CCIM  
 406 855 8946  
 george@cbcmontana.com



CBS

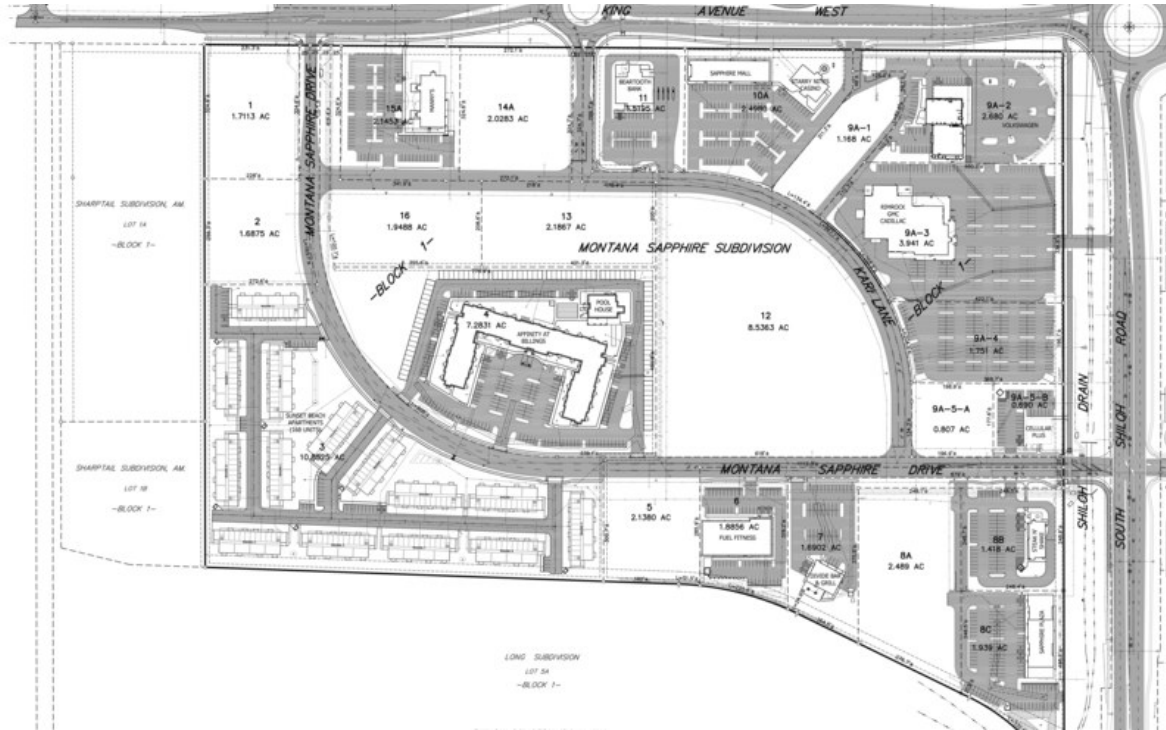
©2022 Coldwell Banker. All Rights Reserved. Coldwell Banker and the Coldwell Banker Commercial logos are trademarks of Coldwell Banker Real Estate LLC. The Coldwell Banker® System is comprised of company owned offices which are owned by a subsidiary of Realty Brokerage Group LLC and franchised offices which are independently owned and operated. The Coldwell Banker System fully supports the principles of the Equal Opportunity Act.



# THE MONTANA SAPPHIRE

Billings, MT 59106

# SALE



SANDE	
LOT 1A	1,713.3 AC
LOT 2	1,687.5 AC
LOT 13	2,186.7 AC
LOT 14A	2,028.3 AC
LOT 15A	2,343.3 AC
LOT 16	1,948.8 AC
LOT 10A	1,498.8 AC
LOT 11	1,152.3 AC
LOT 9A-1	1,188.8 AC
LOT 9A-2	2,480.2 AC
LOT 9A-3	3,941.3 AC
LOT 9A-4	1,751.3 AC
LOT 9A-5-A	0,807.3 AC
LOT 9A-5-B	2,897.3 AC
LOT 5	2,130.3 AC
LOT 6	1,885.6 AC
LOT 7	1,892.2 AC
LOT 8A	2,489.3 AC
LOT 8B	1,418.3 AC
LOT 8C	5,939.3 AC
MONTANA SAPPHIRE SUBDIVISION	
BILLINGS, MONTANA	
OVERALL MASTERPLAN	



CBCMONTANA.COM

Blaine Poppler  
 406 671 0399  
 blaine@cbcmontana.com

George Warmer, CCIM  
 406 855 8946  
 george@cbcmontana.com



CBS

©2022 Coldwell Banker. All Rights Reserved. Coldwell Banker and the Coldwell Banker Commercial logos are trademarks of Coldwell Banker Real Estate LLC. The Coldwell Banker® System is comprised of company owned offices which are owned by a subsidiary of Realty Brokerage Group LLC and franchised offices which are independently owned and operated. The Coldwell Banker System fully supports the principles of the Equal Opportunity Act.



# THE MONTANA SAPPHIRE

Billings, MT 59106

SALE



CBCMONTANA.COM

Blaine Poppler  
406 671 0399  
blaine@cbcmontana.com

George Warmer, CCIM  
406 855 8946  
george@cbcmontana.com



**COLDWELL  
BANKER  
COMMERCIAL**

CBS

©2022 Coldwell Banker. All Rights Reserved. Coldwell Banker and the Coldwell Banker Commercial logos are trademarks of Coldwell Banker Real Estate LLC. The Coldwell Banker® System is comprised of company owned offices which are owned by a subsidiary of Realty Brokerage Group LLC and franchised offices which are independently owned and operated. The Coldwell Banker System fully supports the principles of the Equal Opportunity Act.



# THE MONTANA SAPPHIRE

Billings, MT 59106

SALE



[CBCMONTANA.COM](http://CBCMONTANA.COM)

Blaine Poppler  
406 671 0399  
[blaine@cbcmontana.com](mailto:blaine@cbcmontana.com)

George Warmer, CCIM  
406 855 8946  
[george@cbcmontana.com](mailto:george@cbcmontana.com)



CBS

©2022 Coldwell Banker. All Rights Reserved. Coldwell Banker and the Coldwell Banker Commercial logos are trademarks of Coldwell Banker Real Estate LLC. The Coldwell Banker® System is comprised of company owned offices which are owned by a subsidiary of Realty Brokerage Group LLC and franchised offices which are independently owned and operated. The Coldwell Banker System fully supports the principles of the Equal Opportunity Act.



# THE MONTANA SAPPHIRE

The Montana Sapphire , Billings, MT 59106

SALE



### LOCATION OVERVIEW

The Montana Sapphire offers a prime west end location for Retail, Office and Residential Development. Located at the intersection of Shiloh Road & King Avenue West, The Montana Sapphire is home to retail, services, office and active and retirement living communities. Directly across the street is the new 220,000 Scheels Sporting Goods Center and AMC Theatres. To the north is the 122 acre St Vincent medical campus under development. The Montana Sapphire comprises 65 acres of commercially zoned property with 7 lots available for sale.

Google

Map data ©2022 Google Imagery ©2022 , Maxar Technologies, USDA Farm Service Agency

CBCMONTANA.COM

Blaine Poppler  
 406 671 0399  
 blaine@cbcmontana.com

George Warmer, CCIM  
 406 855 8946  
 george@cbcmontana.com



©2022 Coldwell Banker. All Rights Reserved. Coldwell Banker and the Coldwell Banker Commercial logos are trademarks of Coldwell Banker Real Estate LLC. The Coldwell Banker® System is comprised of company owned offices which are owned by a subsidiary of Realty Brokerage Group LLC and franchised offices which are independently owned and operated. The Coldwell Banker System fully supports the principles of the Equal Opportunity Act.

CBS