



**COLDWELL
BANKER
COMMERCIAL**
CBS

FOR SALE

45 BASIN CREEK ROAD

Butte, MT 59701

AVAILABLE SPACE

24,684 SF

ASKING PRICE

\$1,950,000

FEATURES

- 24,684 Commercial Office Building
- 19,635 SF of Office Space
- 5,049 SF of Enclosed Garage/Warehouse/Storage
- 4 Acres of Land
- Tax Assessed Value: \$2.5 million
- 64 Parking Spaces - Paved Parking Lot in Front of Building with Additional Paved Spaces on Side and at the Rear
- Fenced Yard (372 Linear Feet) in the Rear



CBCWORLDWIDE.COM

OFFICE

Nathan Matelich
406.781.6889
nathan@cbcmontana.com

©2019 Coldwell Banker Real Estate LLC, dba Coldwell Banker Commercial CBS. All rights reserved. Coldwell Banker Commercial® and the Coldwell Banker Commercial are registered service marks owned by Coldwell Banker Real Estate LLC. Coldwell Banker Real Estate LLC, dba Coldwell Banker Commercial Affiliates fully supports the principles of the Fair Housing Act and the Equal Opportunity Act. Each office is independently owned and operated. The information provided is deemed reliable, but it is not guaranteed to be accurate or complete, and it should not be relied upon as such. This information should be independently verified before any person enters into a transaction based upon it.

**COLDWELL BANKER COMMERCIAL
CBS**
1215 24th Street, Suite 240, Billings, Montana 59102
406.656.2001



45 BASIN CREEK ROAD

Butte, MT 59701

Property Address:	45 Basin Creek Road, Butte, MT 59701
Property Type:	Office
Lot Size:	4.0 AC
Building Size:	24,684 SF
Building Class:	A
Zoning:	Community Commercial
Rail Access:	N/A
Year Built:	2000

PROPERTY OVERVIEW

45 Basin Creek Rd is a single story commercial building most recently occupied by Talen Energy. This property has good frontage on Basin Creek Road and is a newer building which was constructed in 2000. City water and sewer service has been extended to the site with natural gas & electricity provided by Northwestern Energy. This 24,684 SF building is an ideal location for a call center, large office user, government agency or educational facility and has easy interstate access.

LOCATION OVERVIEW

This property has good frontage on Basin Creek Road and is a newer building which was constructed in 2000.

CBCWORLDWIDE.COM

Nathan Matelich
406.781.6889
nathan@cbcmontana.com
MT #RRE-RBS-LIC-45092



SALE



**COLDWELL
BANKER
COMMERCIAL**

CBS



45 BASIN CREEK ROAD

Butte, MT 59701

SALE

SALE HIGHLIGHTS

- 24,684 Commercial Office Building
- 19,635 SF of Office Space
- 5,049 SF of Enclosed Garage/Warehouse/Storage
- 4 Acres of Land
- Tax Assessed Value: \$2.5 million
- 64 Parking Spaces - Paved Parking Lot in Front of Building with Additional Paved Spaces on Side and at the Rear
- Fenced Yard (372 Linear Feet) in the Rear
- 2 qty 16ft Overhead Doors
- 15 qty Roof Mounted HVAC Units
- C-2 Community Commercial Zoning
- Oversized IT/Communications Room with Raised Panel Floor for Ease in Cabling - HUB for Talen Energy's statewide energy operations and marketing
- Fully plumbed and vented chemistry lab
- Security system in place
- Fire protection systems in place
- Subject property includes private offices and numerous conference rooms of varying sizes, restrooms, kitchen and large scale open floor plan on one side of building
- Building was designed as 2 completely separate office spaces (business units) with one space being predominantly open trading floor and the other predominantly private offices making it ideal if 2 separate businesses/organizations wanted to occupy the space
- Office furniture negotiable & could be included in the sale



CBCWORLDWIDE.COM

Nathan Matelich

406.781.6889

nathan@cbcmontana.com

MT #RRE-RBS-LIC-45092



**COLDWELL
BANKER
COMMERCIAL**

CBS



45 BASIN CREEK ROAD

Butte, MT 59701

SALE



CBCWORLDWIDE.COM

Nathan Matelich
406.781.6889
nathan@cbcmontana.com
MT #RRE-RBS-LIC-45092



**COLDWELL
BANKER
COMMERCIAL**

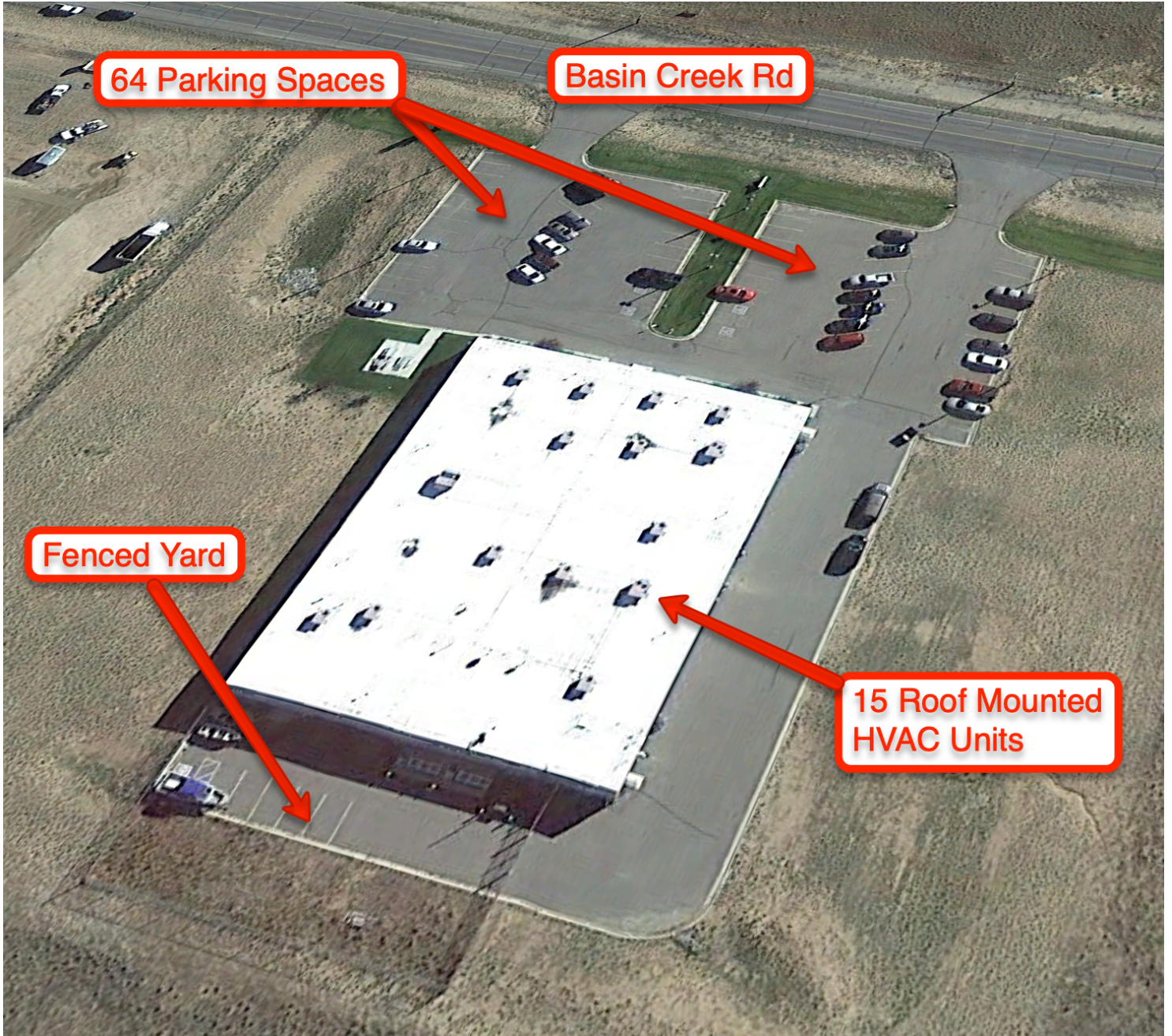
CBS



45 BASIN CREEK ROAD

Butte, MT 59701

SALE



CBCWORLDWIDE.COM

Nathan Matelich
406.781.6889
nathan@cbcmontana.com
MT #RRE-RBS-LIC-45092



**COLDWELL
BANKER
COMMERCIAL**

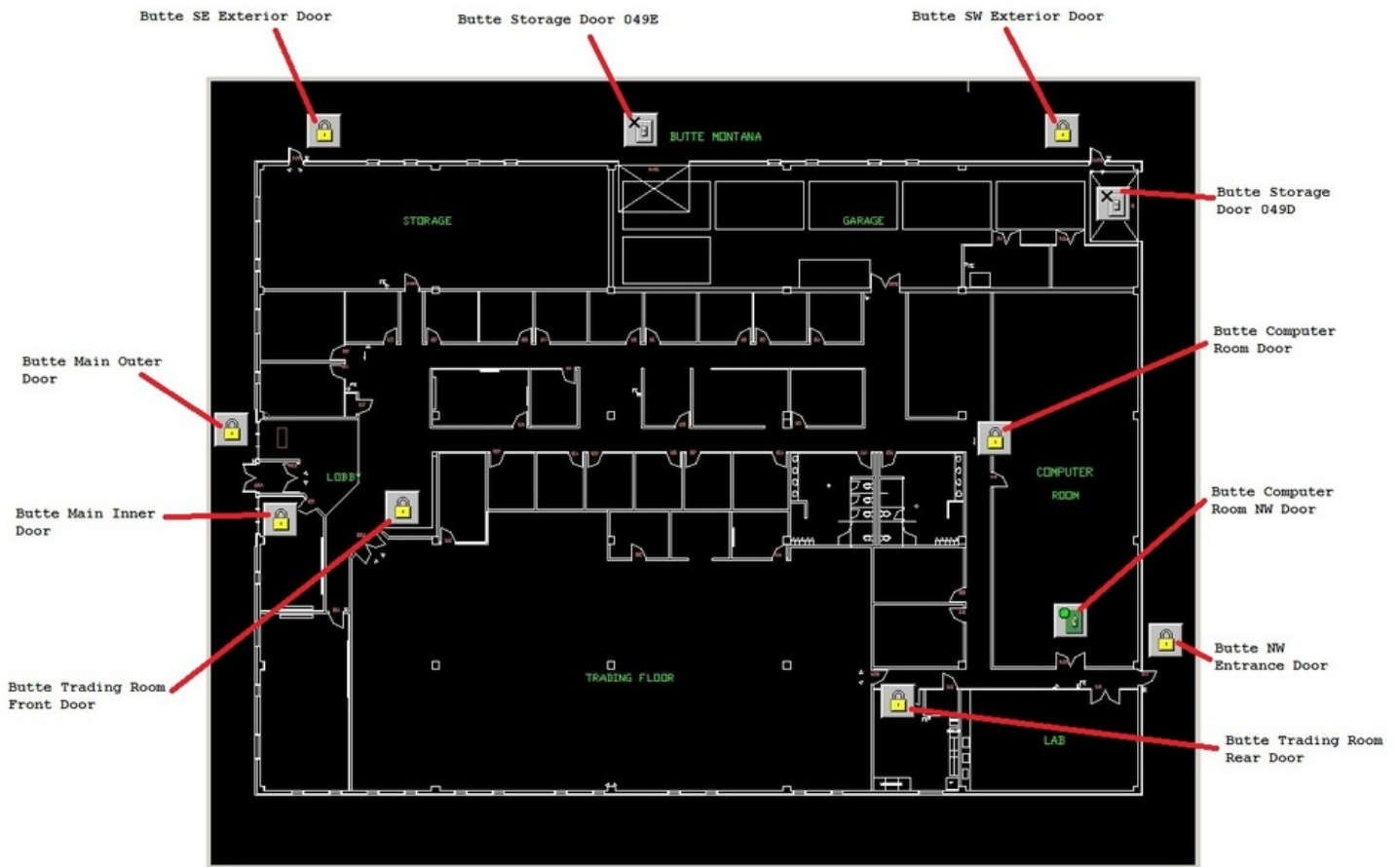
CBS



45 BASIN CREEK ROAD

Butte, MT 59701

SALE



CBCWORLDWIDE.COM

Nathan Matelich
406.781.6889
nathan@cbcmontana.com
MT #RRE-RBS-LIC-45092



**COLDWELL
BANKER
COMMERCIAL**

CBS



45 BASIN CREEK ROAD

Butte, MT 59701

SALE



Map data ©2019 Imagery ©2019 , DigitalGlobe, USDA Farm Service Agency

CBCWORLDWIDE.COM

Nathan Matelich
406.781.6889
nathan@cbcmontana.com
MT #RRE-RBS-LIC-45092



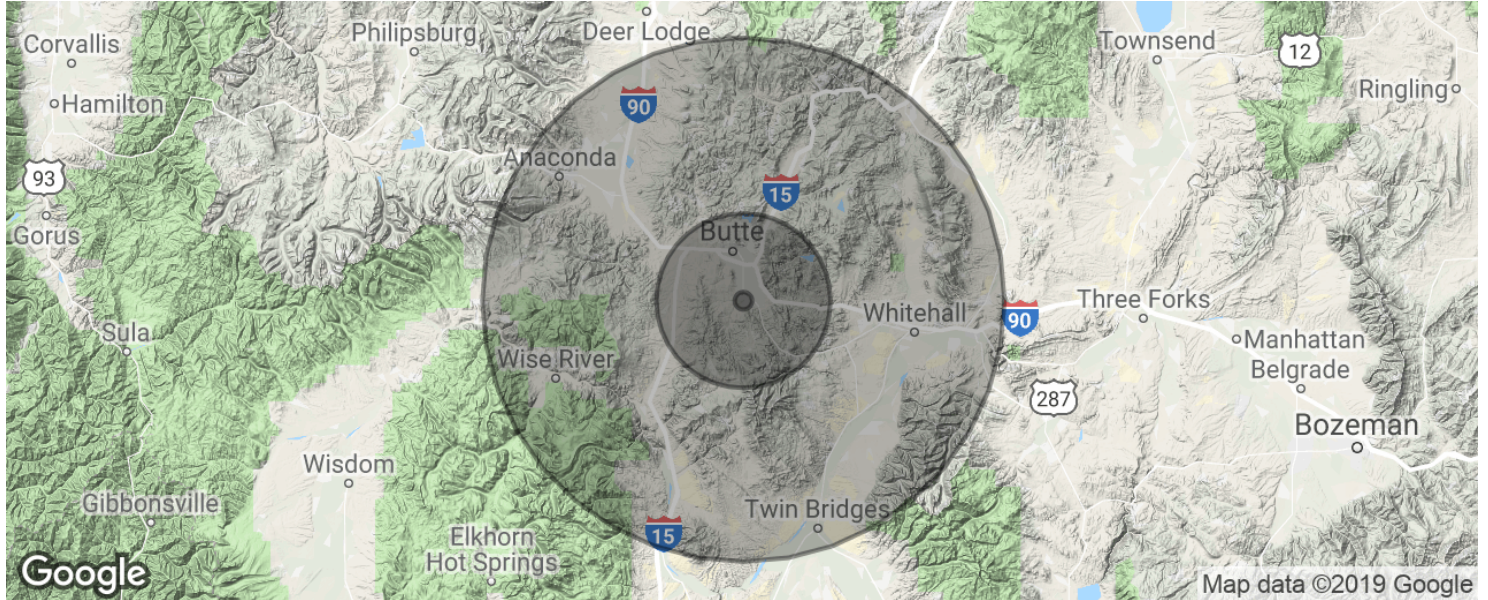
**COLDWELL
BANKER
COMMERCIAL**

CBS



45 BASIN CREEK ROAD

Butte, MT 59701



POPULATION	1 MILE	10 MILES	30 MILES
Total population	23	7,594	20,147
Median age	44.2	46.9	44.8
Median age (Male)	44.1	43.6	43.6
Median age (Female)	44.5	48.7	45.7
HOUSEHOLDS & INCOME	1 MILE	10 MILES	30 MILES
Total households	9	3,138	8,484
# of persons per HH	2.6	2.4	2.4
Average HH income	\$66,293	\$63,186	\$55,692
Average house value	\$252,262	\$220,411	\$213,890

* Demographic data derived from 2010 US Census

CBCWORLDWIDE.COM

Nathan Matelich
406.781.6889
nathan@cbcmontana.com
MT #RRE-RBS-LIC-45092



COLDWELL
BANKER
COMMERCIAL

CBS